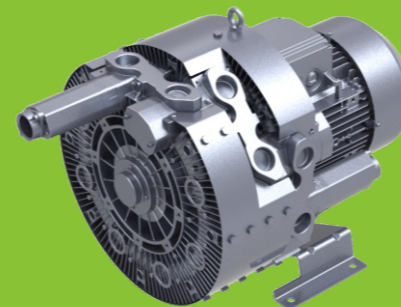


升鸿®
ShengHong

专业气环泵设计、制造商
Professional air pump design、manufacturer



江苏升鸿大风机械设备有限公司

SHENGHONG DAFENGMECHANICAL EQUIPMENT CO., LTD

Certified by International
Standard Organization
ISO-9001



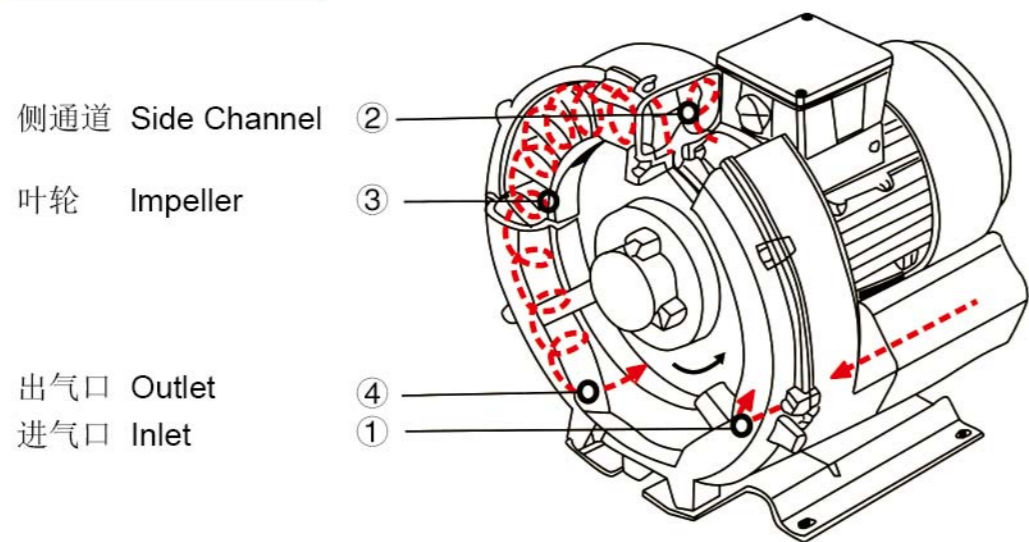
中国 - 台湾 - 品牌

2013 高压风机选型手册
High pressure fan product manuals

目录 CONTENTS

| | | | |
|---|--------------|---|--------------|
| 气环泵的工作原理 Gas ring pump working principle | 1 | EHS-9-3AC系列选型参数、曲线、尺寸 EHS-9-3AC series production selection parameters、curve、size | 47-52 |
| 气环泵的结构组成和分解 Gas ring pump structure and decomposition | 2 | EHS2-1AC系列高压风机选型参数、曲线 EHS2-1AC series of selection parameters、high pressure fan curve、size... | 53-54 |
| 升鸿系列产品的特点与优势 product features and advantages of the Feng Paker | 3-7 | EHS2-3AC系列高压风机选型参数、曲线 EHS2-3AC series of selection parameters、high pressure fan curve、size... | 55-61 |
| 升鸿气环泵选型参考及附表 product selection of reference and schedule | 8-12 | 透浦式鼓风机机选型参 Turbo Blowers(Centrifugal Blowers) parameters、curve | 62-68 |
| EHS-1AC系列选型参数、曲线、尺寸 EHS-1AC series production parameters、curve、size | 13-16 | 透浦式多段式鼓风机选型参数 Multi-stage Turbo Blowers parameters、curve | 69-71 |
| EHS-2-3AC系列选型参数、曲线、尺寸 EHS-2-3AC series production parameters、curve、size | 17-20 | 直碟式鼓风机选型参数 Plate Fans parameters、curve | 72-73 |
| EHS-2-3AC系列选型参数、曲线、尺寸 EHS-2-3AC series production parameters、curve、size | 21-24 | 高压风机配件、消音器、释压阀、过滤器 High pressure blower fittings, muffler, pressure release valve, filter | 74-75 |
| EHS-3-3AC系列选型参数、曲线、尺寸 EHS-3-3AC series production parameters、curve、size | 25-28 | 台湾升鸿气泵行业案例 TAIWAN ShengHong industry application case | 76-78 |
| EHS-4-3AC系列选型参数、曲线、尺寸 EHS-4-3AC series production parameters、curve、size | 29-32 | | |
| EHS-5-3AC系列选型参数、曲线、尺寸 EHS-5-3AC series production parameters、curve、size | 33-35 | | |
| EHS-6-3AC系列选型参数、曲线、尺寸 EHS-6-3AC series production parameters、curve、size | 36-41 | | |
| EHS-7/8-3AC系列选型参数、曲线、尺寸 EHS-7/8-3AC series production parameters、curve、size | 42-46 | | |

气环泵工作原理 Operating Principle



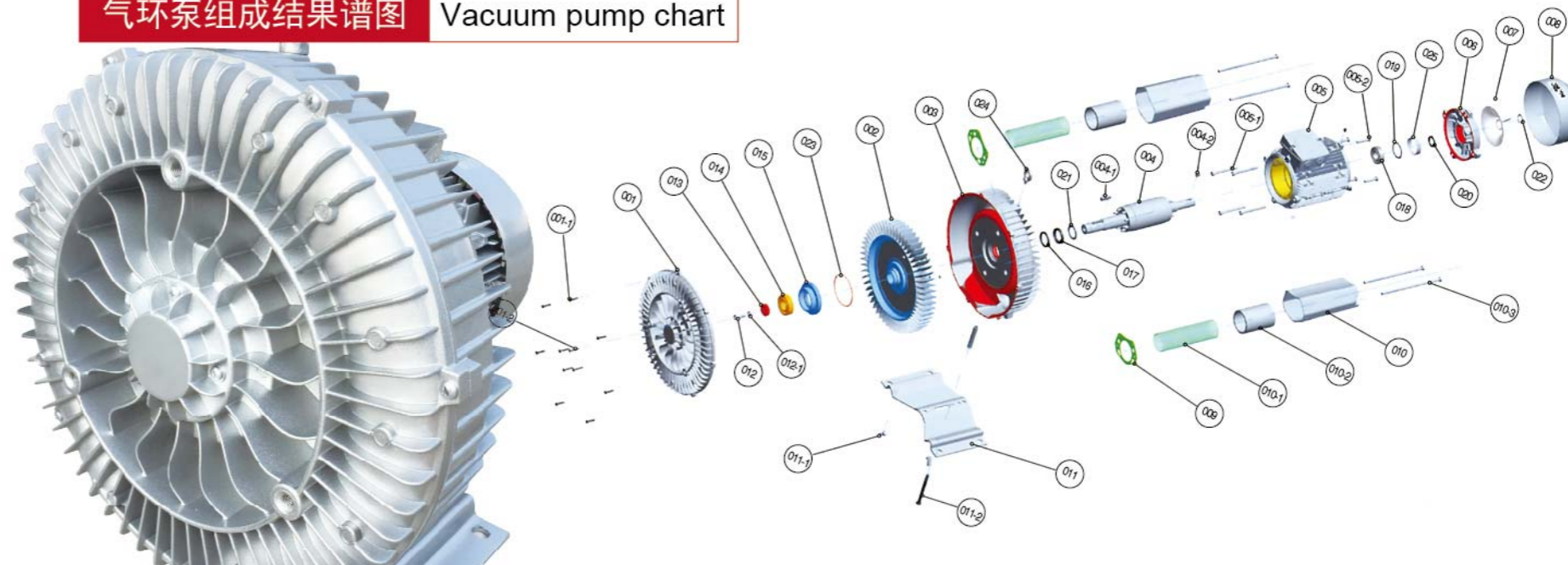
气环泵叶轮直接安装在电机转子上,是完全地无接触压缩。由于泵轴安装在压缩腔外,所以即使工作在最大的压差下,也能确保机械的最大工作可靠性。气体由吸气口 1 吸入,但它进入侧通道 2 以后,旋转叶轮方向上给气体一个速度同时叶片上离心力使气体向外加速且压力增加。随着旋转的进行,气体的动能增加,使得沿侧通道的气体压力进一步增加。随着侧通道在出口变窄,气体被挤出叶片并通过出口消声器 4 排出泵体。

The impellers are mounted directly on the motor shaft for noncontact compression entirely without friction. Maximum operational reliability, even at high differential is ensured by the arrangement of the bearings outside the compression chamber.

The gas is taken in through the inlet 1. As it enters the side channel 2, the rotating impeller 3 imparts velocity to the gas in the direction of rotation. Centrifugal force in the impeller blades accelerates the gas outward and the pressure increases. Every rotation adds kinetic energy.

Resulting in the further increase of the pressure along the side channel. The side channel narrows at the rotor, sweeping the gas off the impeller blades and discharging it through the outlet silencer 4 where it exits the side channel blower.

气环泵组成结果谱图 Vacuum pump chart



| 编号 | 部件名 | 编号 | 部件名 | 编号 | 部件名 | 编号 | 部件名 |
|-----|------------------|-----|---------------------|-------|-----------------|-------|------------------------|
| 001 | 泵盖 pump cover | 011 | 底座 base | 021 | 垫片 washer | 005-2 | 螺钉 screw |
| 002 | 叶轮 impeller | 012 | 螺钉 screw | 022 | 卡簧 circlip | 010-1 | 消音网罩 mesh enclosure |
| 003 | 泵体 pump casing | 013 | 转子压板 pressure-plate | 023 | O 型密封圈 O-ring | 010-2 | 消音海绵 soundproof sponge |
| 004 | 电机转子 rotator | 014 | 轴承 screw | 024 | 吊环 hand ring | 010-3 | 螺钉 screw |
| 005 | 电机 motor | 015 | 固定座 fixing base | 025 | 轴承包络圈 wrap ring | 011-1 | 螺钉 screw |
| 006 | 电机后盖 motor cover | 016 | 毡环 felt ring | 001-1 | 螺钉 screw | 011-2 | 螺钉 screw |
| 007 | 风叶 fan | 017 | 油封 oil seal | 001-2 | 螺钉 screw | 012-1 | 弹簧垫圈 lock washer |
| 008 | 风罩 fan cover | 018 | 轴承 screw | 004-1 | 平键 flat key | | |
| 009 | 泵体纸垫 paper pad | 019 | 波浪垫片 ware washer | 004-2 | 平键 flat key | | |
| 010 | 消音筒 Muffle Tube | 020 | 油封 oil seal | 005-1 | 螺钉 screw | | |

升鸿特点优势 Features and advantages

- 改进传统工艺,是轴承前置,增加了工作稳定性。
Improvement of traditional crafts, bearing front, increased stability.
- 采用部分进口配件,延长使用寿命。
Using some of the imported parts, lengthen service life.
- 机壳采用优质铝合金一次性压铸成型,零部件的加工在切削加工中完成,保证精度改进传统工艺。
The shell adopts the high quality aluminum alloy one-time die-casting molding, machining parts Completed in the cutting process, ensure the accuracy improvement of traditional technology.
- 叶轮的设计经过精确计算论证,使同功率下性能比同类产品提高 20%。
The design of the impeller through the accurate calculation of argumentation, the performance under the same power ratio Similar products increased by 20%.

性能优势 The performance advantages

- 100% 无油,无水压缩,所有的气环真空泵的电机均为 IP55 的防护等级,F 级绝缘。
- 双频 (50/60HZ) 及宽电压能满足几乎世界上所有地区的电压等级,轴承外置设计,能承受较高的工作温度,提高了运行可靠性和使用寿命。
- 引进变频驱动新概念,比用普通电机驱动性能最大可以提高到 300%,叶轮与泵体间的独特的密封形式减少气体压缩过程中的压力损失。
- 泵壳、叶轮采用压铸模型成型,坚固耐用,散热优良,采用德国、日本进口精密机床加工切割,保证精度与品质,气泵表面经过防护漆处理。
- 产品经过严格机械、电气等各方面性能测试,采用 PROE、UG、CAD 等电脑辅助设计软件和运动模拟仿真演示。
- 100% oil free compressed gas,water ring vacuum pump,motor,all are the protection calss IP55,class F insulation.
- Dual frequency (50/60HZ)and wide voltage can meet almost all regions of the world the voltage level, the external design of the bearing, can bear high woring temperatuer, improves the reliability and sevice life.
- The introduction of variable frequency sriver new concept, than the maximum performance can be driven by a commom motor is improved to 300%, impeller and pump body seal forms the unique reduced pressure gas pressure loss in the process of compression.
- Pump casing, impeller die-casting molding, sturdiness and durability, excellent heat dissipation, imported Japan Germany, precision machine tool cutting, ensure the accuracy and quality, air pump through the surface of protective paint processing
- Products through the strict mechanical, electrical performance test, simulation demonstrate the use of PROE, UG, CAD and other computer aided design software and motion.

规格齐全 享誉全球 Specifications complete, famous all over the world

- 多达100多种的产品型号可满足您各种具体应用的要求，采用宽电压双频(50/60HZ) 电机，防护等级IP55(绝缘等级F级)，在世界的任何地方，都可以应用升鸿气环真空泵。并且无论是在欧洲、中东、东南亚，升鸿都能在很短的时间内交货，我们批量的产品可以随时满足您的需求。
- As many as 100 kinds of products can meet your specific application of various requirements, with wide voltage frequency (50/60HZ) motor, protection class IP55 (class F insulation), anywhere in the world, can be applied to wind morale ring cacuum pump. shatever in Europe, Middle East, Southeast Asia, can be delivered in a very short period of time, our volume inventory of products can meet your needs.

变频驱动 高效节能 Variable frequency drive energy efficiency

- 当在电机或控制柜上直接安装一个变频频率，同样型号的气环真空泵、压缩机可以在节能的同时处理更多流量的气体。这是由于精确的控制系统总是提供您需要的准确动力，从而避免额外的气量消耗，使系统运行费用大大减低。
- Directly when installing a variable frequency motor or the control cabinet, the gas ring vacuum pump, compressor of the same type can handle more traffic in energy saving at the same time. The is because always precise control system to provide accurate power you need, so as to prevent additional gas consumption, the system running cost greatly reduced.

灵活的安装方式 Flexibe installation

- 能按任何轴向安装，没有任何限制，这意味着降低了空间要求和安装费用。
- Can be mounted in any direction, without any restrictions, which means that reduces the space requirements and installation costs.

全面的质量管理 Total quality management

- 根据ISO9001:2000的标准，升鸿总是把质量和客户满意放在第一位，从最初的设计、开发、生产、订单处理以及随后的顾客支持，我，我们总是提供给你最好的、遍及整个产品全部周期的系统服务。升鸿产品的技术进步和市场成功的高质量是密不可分。为了保证产品的高质量，从产品的设计到供货，升鸿已建立了用于监督生产各个环节的可靠的质量保证系统。这个质量保证系统符合相关的标准约定，并通过CE认证，满足全世界的要求。同时，欢迎OEM、ODM等定制品开发，针对客户的使用要求和场合开发满意的新产品。
- According to the standard of ISO9001:2000, wind, always put the quality and customer satisfaction in the first place, from the initial design, development, production, order processing and subsequent customer support, we will always provide you the best service, system throught the product cycle. Technology progress and market success of wind and products with its high quality is inseparable. In order to guarantee the high quality of products, from product design to delivery, wind, have been established for the reliable quality of each link of supervision to ensure production system. The quality assurance system in conformity with the agreed standards, and through the ISO9001 certification, to meet the requirements of the world. Also welcome OEM, ODM set product development, new product usage requirements and situations develop satisfactory.

最高压差 EHS2 The high pressure difference EHS2

- 我们富有革命的EHS2气环真空泵能产生高达1,000mbar的压差——远远高于其他任何的气环式压缩机。截至目前，能产生压差范围的其它系统要比我们的EHS2体积更庞大，噪音更高，而且容易磨损。现在，除了拥有低噪音，无磨损等这些优点外，我们的EHS2还能在苛刻的条件下应用。我们的工程师和设计者还在不断努力以使我们的产品变得更加安静。EHS2气环真空泵能在不停机维护的条件下连续工作20,000小时。

- Our revolutionary EHS2 gas ring vacuum pumps can generate up to 1000mbar of differential pressure——far higher than any other of the gas piston compressor At present, the other system can produce pressure range than our EHS2 volume larger, more noise, and easy to wear Now, in addition to having low noise, no wear ect. these advantages, our EHS2can also be used in more severe conditions.Our engineers and designers are trying to make our products become more quiet. EHS2 gas ring vacuum pump can work continously 20000 hours without downtime maintenance conditions.

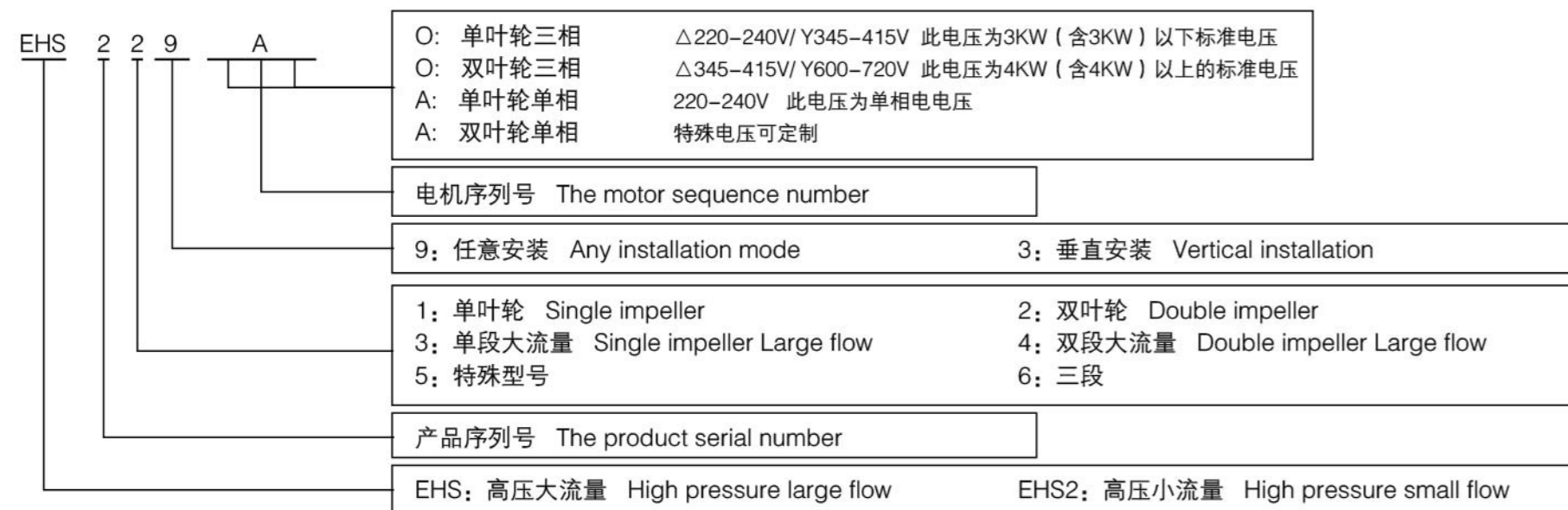


如何选型 How to select model

- 升鸿气泵选型有哪些型号、参数? / ShengHong air selection which models, parameters?
- 如何选出性能最匹配的产品? / How to select the most matching performance products?



型号说明 Demonstration of the type



绝对压力 Absolute pressure

绝对压力是以理想真空（绝压为零）为基准而得到的测量值。所以绝压是比参考值大。

Absolute pressure in vacuum (absolute pressure is zero) as the reference and the measured values obtained. So the pressure is greater than the reference value.

表压 Gauge pressure

表压是指高于标准大气压力的测量值。即以标准大气为基准，因此实际测量值总是比基准值大。

Gauge pressure is that measurement is higher than the standard atmospheric pressure value. The standard atmosphere for reference, so the actual measured value is large than the reference value.

真空度 Vacuum degree

真空度是指低于标准大气压力的测量值。测量基准任仍为标准大气压，所以实际测量值小。

The vacuum is that measurement is lower than standard atmospheric pressure value. Measurement benchmark is the standard atmospheric pressure, so the actual measured value.

换算表 Conversion table

| 风量 Air volume | | |
|---------------------------|---------------------|---------------------------|
| 初始单位 | 换算因子 | 目标单位 |
| The initial unit | Conversion constant | Target unit |
| l/min | 0.06 | m ³ /h |
| gal/min | 0.227 | m ³ /h |
| ft ³ /min(cfm) | 1.699 | m ³ /h |
| m ³ /h | 16.667 | l/min |
| m ³ /h | 4.403 | gal/min |
| m ³ /h | 0.588 | ft ³ /min(cfm) |

| 压力 Pressure | | |
|------------------|---------------------|-------------|
| 初始单位 | 换算因子 | 目标单位 |
| The initial unit | Conversion constant | Target unit |
| Pa | 0.01 | mbar |
| hpa | 1.0 | mbar |
| kpa | 10.0 | mbar |
| mmH2O(mmAq) | 0.098 | mbar |
| mH2O | 98.07 | mbar |
| at | 980.7 | mbar |
| inchH2O | 2.491 | mbar |
| PSII pdf/in2 | 68.948 | mbar |

选型及使用须知 Selection and use knowledge

1、DIN VDE 0105或IGC 364 规定，非资格人员不得从事电气设备的工作。

资格人员：是指有厂区安全负责人授权的人员。他们根据自有的培训、经验、相关标准的知识及对事故预防的能力来完成某项必要的工作，同时能意识到潜在的危险并采取必要的防范措施。有必要的生命急救知识，熟悉相关的生命救护设备。

DIN VDE 0105 or IGC 364 regulations, non qualified personnel shall not be engaged electrical equipment work. Qualified personnel:refers to the factory safety responsible person authorized personnel. According to their own training, experience, knowledge and ability related standards on prevention of accidents to complete a necessary work, and to realize the potential The risk and take the necessary preventive measures. It is necessary to life first aid knowledge, familiar with the life rescue equipment related.

2、随设备而来的操纵说明书不可能包含所有涉及要素的详细信息，尤其不可能把每一种可能的安装，操作及维护方式都涉及到。因此这些操作手册只包括能让资格人员正确操作机器或设备的必要信息。因此有必要澄清一下，如果缺乏产品的详细参数，或有关操作等疑问，请根据产品的设备类型和加工代号，联系我们。

Came with the equipment operating instructions may not contain detailed information all of the factors related, in particular, can not put every possible intallation,are related to the operation and maintenance of way. The manual includes only can let the qualification information necessary for correct operation personnel of machines or equipment. Therefore, it is necessary to clarify, if lack of detailed parameters of products, or related questions, please according to the type of equipment and processing code for this product, contact us.

3、允差：电机符合DIN EN 60 034/DIN IEC 34-1标准，绝缘等级F。

Tolerance standard: motor meets the standard of DIN EN 60 034/DIN IEC 34-1, insulation class F.

4、在选型时注意，要根据使用现场的具体情况，是侧重于流量还是压力等相关因素，选择最合适，性价比最高，最节省能源的方案。必要时使用释压阀、过滤器等辅助配件，以便更好的发挥设备的性能和匹配现场。

In the selection of attention when, according to the specific circumstances of the scene, is focused on the flow or pressure and other related factor, choose the most suitable, cost-effective, the energy is saved. The use of pressure release valve, filter when necessary And other auxiliary parts, in order to better play the performance of equipment and matching field.

5、启动前及启动准备检查紧固件有无松动、脱落，外壳不变形错位，完好无损/接线方式、电源电压等符合要求/外壳接地，安装漏电保护器/检查电机转向是否正常运转时，应平稳。震动、温升噪音均正常。

Start up and ready to check the fastener without loosening, shed off 5 before the start, shell not deformation disloaction, intact/wiring, power supply voltage, meet the requirement/shell grounding , installation of leakage protector/check the shift motors ensuer normal operation should be smooth, vibration, noise, temperature rise were normal.

6、气泵在转运过程中，如出现噪音异常增大、尖叫、振动加大。温度异常升高应立即切断电源进行检查，待故障排除后再通电运转。

Pump during operation, such as nosie, vibration, increase the abnormal increase of screaming, abnormal temperature rise should be cut off the power supply immediately checked, troubleshooting to be re energized.

严禁气泵在有连接管道的情况下进行通电启动！

No air pump in a connection pipeline of start power!

严禁进气口采用硬链接，必须采用软连接！

No inlet using hard links, must use soft connection!

EHS/1AC(单、双级)气环真空泵型号及性能参数表(IP55 50/60HZ)

EHS/1AC(Single, double impeller) Gas ring vacuum pump models and the performance parameters table(IP55 50/60HZ)

| 型号 (EHS) Model | 单级 | 马达额定参数 | | | | 最大 排吸流量 Max airflow m³/h | 额定 真空压力 rated Vacuum mbar | 额定 压缩压力 rated compress mbar | 噪音 noises db(A) | 重量 weight Kg |
|-------------------|------------------|-----------------|-------------|--------------|--------------|-----------------------------------|------------------------------------|--------------------------------------|-----------------------|--------------------|
| | 双级 | 频率 | 功率 | 电压 | 电流 | | | | | |
| | single double | frequency HZ | power KW | voltage V | current A | | | | | |
| EHS-229-A | 单 | 50 | 0.4 | 200-240V | 2.7 | 80 | -120 | 130 | 53 | 10 |
| | | 60 | 0.5 | 200-240V | 3.2 | 98 | -150 | 160 | 56 | |
| EHS-239-A | 单 | 50 | 0.4 | 200-240V | 2.7 | 100 | -110 | 110 | 54 | 11 |
| | | 60 | 0.5 | 200-240V | 3.2 | 120 | -130 | 140 | 57 | |
| EHS-249-A | 单 | 50 | 0.55 | 200-240V | 3.7 | 95 | -120 | 130 | 57 | 13 |
| | | 60 | 0.62 | 200-240V | 4.9 | 110 | -120 | 130 | 60 | |
| EHS-259-A | 单 | 50 | 0.7 | 200-240V | 4.8 | 100 | -150 | 150 | 55 | 14 |
| | | 60 | 0.8 | 200-240V | 4.1 | 120 | -150 | 160 | 57 | |
| EHS-269-A | 双 | 50 | 1.3 | 200-240V | 7.3 | 120 | -240 | 280 | 58 | 17 |
| | | 60 | 1.5 | 200-240V | 8.3 | 145 | -230 | 260 | 60 | |
| EHS-279-A | 单 | 50 | 0.7 | 200-240V | 4.8 | 145 | -100 | 100 | 56 | 14 |
| | | 60 | 0.8 | 200-240V | 4.1 | 165 | -110 | 100 | 58 | |
| EHS-319-A | 单 | 50 | 0.7 | 200-240V | 4.5 | 145 | -120 | 120 | 63 | 15 |
| | | 60 | 0.83 | 200-240V | 5.6 | 175 | -130 | 130 | 64 | |
| EHS-329-A | 单 | 50 | 0.85 | 200-240V | 5 | 145 | -160 | 160 | 63 | 16 |
| | | 60 | 0.95 | 200-240V | 5.8 | 175 | -160 | 160 | 64 | |
| EHS-339-A | 单 | 50 | 1.3 | 200-240V | 7.3 | 145 | -170 | 200 | 63 | 17 |
| | | 60 | 1.5 | 200-240V | 7.8 | 175 | -210 | 220 | 64 | |

EHS/1AC(单、双核)气环真空泵型号及性能参数表(IP55 50/60HZ)

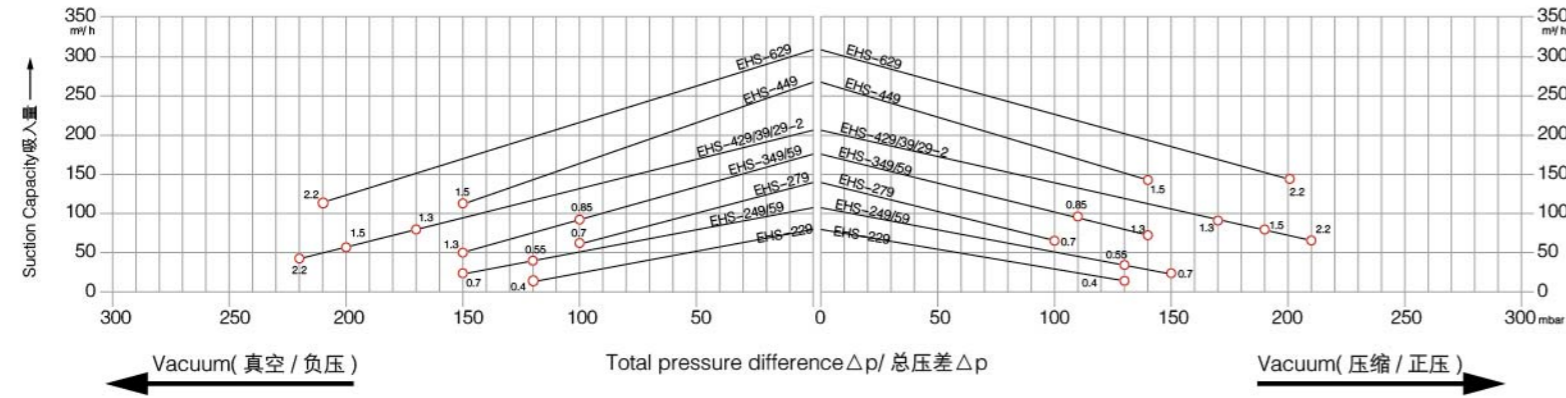
EHS/1AC(Single, double impeller) Gas ring vacuum pump models and the performance parameters table(IP55 50/60HZ)

| 型号 (EHS) Model | 单级 | 马达额定参数 | | | | 最大 排吸流量 Max airflow m³/h | 额定 真空压力 rated Vacuum mbar | 额定 压缩压力 rated compress mbar | 噪音 noises db(A) | 重量 weight Kg |
|-------------------|------------------|-----------------|-------------|--------------|--------------|-----------------------------------|------------------------------------|--------------------------------------|-----------------------|--------------------|
| | 双级 | 频率 | 功率 | 电压 | 电流 | | | | | |
| | single double | frequency HZ | power KW | voltage V | current A | | | | | |
| EHS-3315-A | 双 | 50 | 1.5 | 200-240V | 9 | 150 | -260 | 260 | 66 | 28 |
| | | 60 | 1.75 | 200-240V | 9.5 | 180 | -300 | 290 | 69 | |
| EHS-349-A | 单 | 50 | 0.85 | 200-240V | 5.2 | 180 | -100 | 110 | 64 | 16 |
| | | 60 | 0.95 | 200-240V | 5.8 | 210 | -100 | 110 | 66 | |
| EHS-359-A | 单 | 50 | 1.3 | 200-240V | 7.3 | 180 | -150 | 140 | 64 | 17 |
| | | 60 | 1.5 | 200-240V | 8.3 | 210 | -140 | 130 | 66 | |
| EHS-429-2A | 单 | 50 | 1.3 | 200-240V | 7.3 | 210 | -170 | 170 | 64 | 22 |
| | | 60 | 1.5 | 200-240V | 7.5 | 255 | -150 | 140 | 70 | |
| EHS-439-A | 单 | 50 | 1.5 | 200-240V | 10.4 | 210 | -200 | 190 | 64 | 24 |
| | | 60 | 1.75 | 200-240V | 11.2 | 255 | -220 | 210 | 70 | |
| EHS-429-A | 单 | 50 | 2.2 | 200-240V | 10 | 210 | -220 | 210 | 64 | 26 |
| | | 60 | 2.55 | 200-240V | 11 | 255 | -240 | 230 | 70 | |
| EHS-449-A | 单 | 50 | 1.5 | 200-240V | 10.4 | 270 | -150 | 140 | 65 | 26 |
| | | 60 | 1.75 | 200-240V | 11.2 | 330 | -120 | 110 | 71 | |
| EHS-629-A | 单 | 50 | 2.2 | 200-240V | 12.8 | 318 | -210 | 200 | 72 | 30 |
| | | 60 | 2.55 | 200-240V | 12.8 | 376 | -210 | 200 | 74 | |

EHS 真空压缩选型曲线 1AC/ Vacuum compression type curve

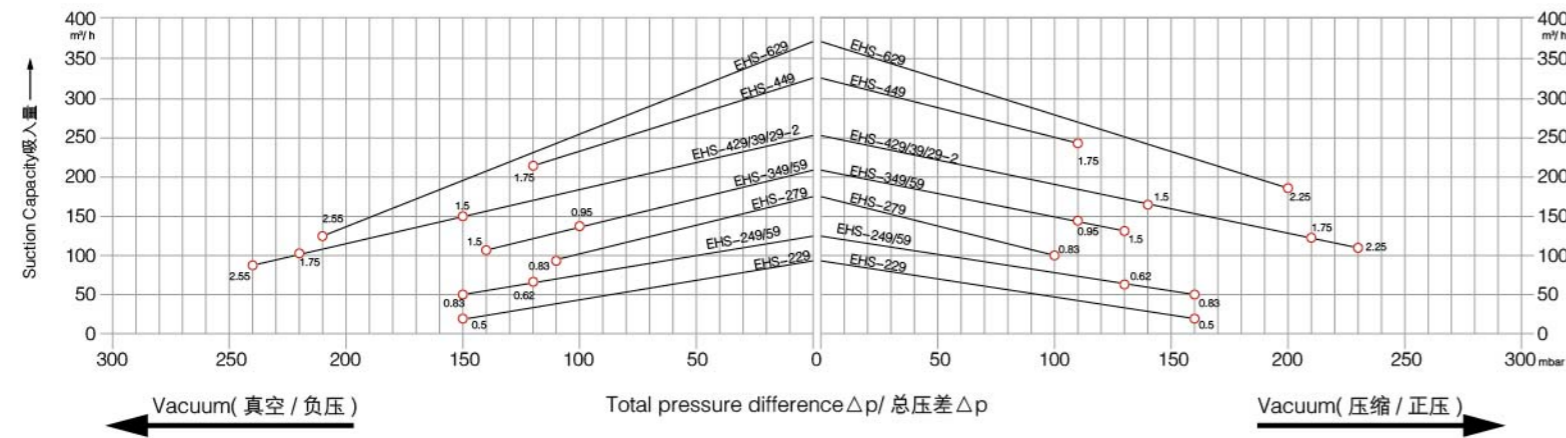
Vacuum Selection diagram 50 Hz--真空选型图表 50Hz

Compressor Selection Diagram 50 Hz--压缩选型图表 50Hz



Vacuum Selection diagram 60 Hz--真空选型图表 60Hz

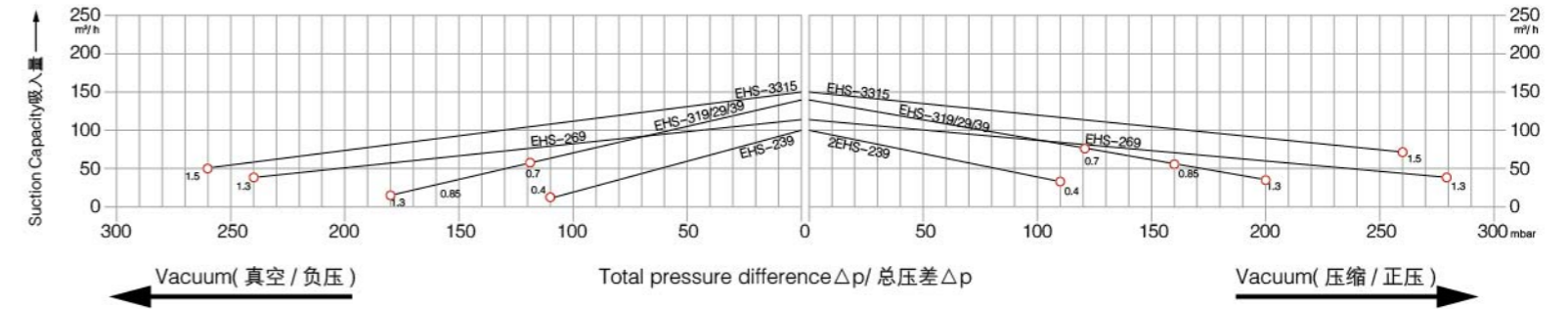
Compressor Selection Diagram 60 Hz--压缩选型图表 60Hz



EHS真空压缩选型曲线 1AC/ Vacuum compression type curve

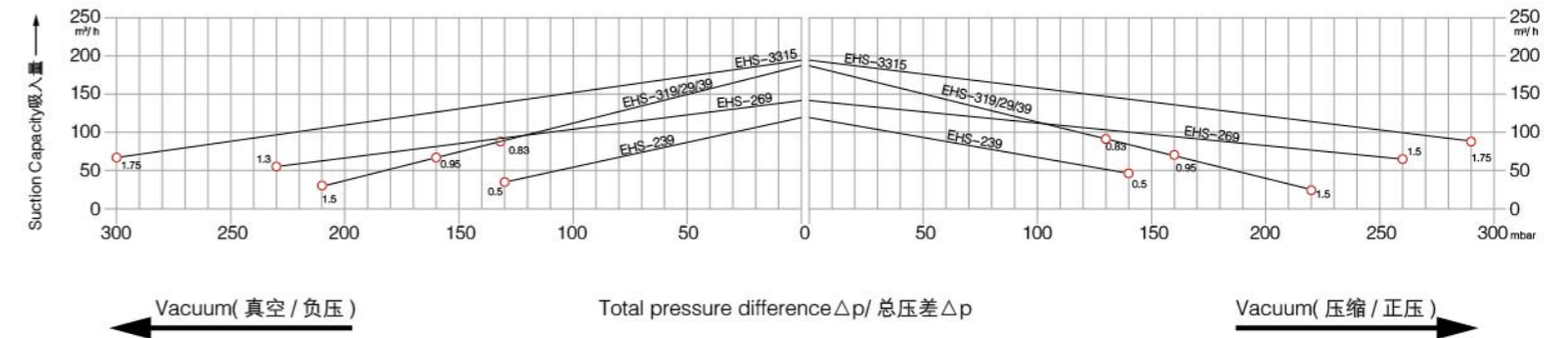
Vacuum Selection diagram 50 Hz--真空选型图表 50Hz

Compressor Selection Diagram 50 Hz--压缩选型图表 50Hz



Vacuum Selection diagram 60 Hz--真空选型图表 60Hz

Compressor Selection Diagram 60 Hz--压缩选型图表 60Hz



EHS-2/3AC (单、双级) 气环真空泵型号及性能参数表(IP55 50/60HZ)

EHS-2/ 3AC (Single,double impeller) Gas ring vacuum pump models and the performance parameters table (IP55 50/60HZ)

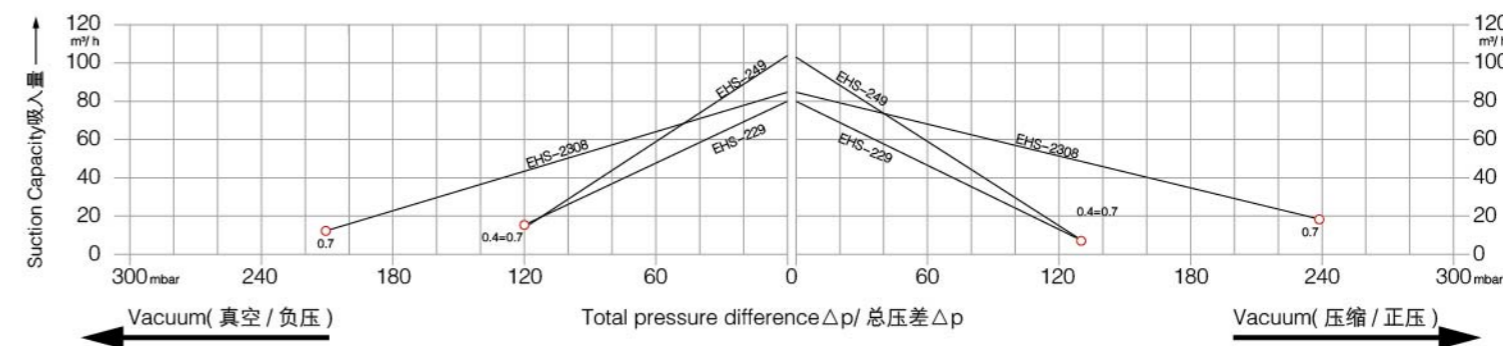


| 型号 (EHS) Model | 单级 | 频率 frequency HZ | 马达额定参数 | | | 最大 排吸流量 Max airflow m³/h | 额定 真空压力 rated Vacuum mbar | 额定 压缩压力 rated compress mbar | 噪音 noises db(A) | 重量 weight Kg | |
|-------------------|------------------|-----------------------|-------------|--------------|--------------|-----------------------------------|------------------------------------|--------------------------------------|-----------------------|--------------------|----|
| | 双级 | | 功率 | 电压 | 电流 | | | | | | |
| | single double | | power KW | voltage V | current A | | | | | | |
| EHS-229 | 单 | 50 | 0.4 | 200-240Δ | 345-415Y | 2.6Δ/1.5Y | 80 | -120 | 130 | 53 | 10 |
| | | 60 | 0.5 | 220-275Δ | 380-480Y | 2.6Δ/1.5Y | 98 | -150 | 160 | 56 | |
| EHS-239 | 单 | 50 | 0.4 | 200-240Δ | 345-415Y | 2.6Δ/1.5Y | 105 | -120 | 130 | 54 | 11 |
| | | 60 | 0.5 | 220-275Δ | 380-480Y | 2.6Δ/1.5Y | 120 | -150 | 150 | 57 | |
| EHS-249 | 单 | 50 | 0.7 | 200-240Δ | 345-415Y | 3.8Δ/2.2Y | 105 | -120 | 130 | 54 | 12 |
| | | 60 | 0.83 | 220-275Δ | 380-480Y | 3.8Δ/2.2Y | 120 | -160 | 180 | 57 | |
| EHS-2308 | 双 | 50 | 0.7 | 200-240Δ | 345-415Y | 3.8Δ/2.2Y | 85 | -210 | 240 | 55 | 15 |
| | | 60 | 0.83 | 220-275Δ | 380-480Y | 3.75Δ/2.15Y | 102 | -250 | 250 | 61 | |

EHS-2 真空压缩选型曲线 3AC/ Vacuum compression type curve

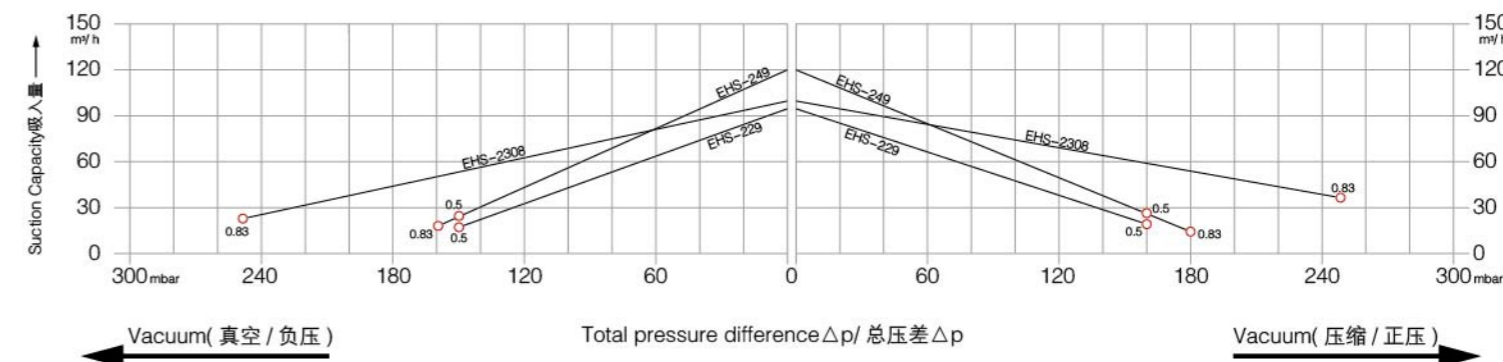
Vacuum Selection diagram 50 Hz--真空选型图表 50Hz

Compressor Selection Diagram 50 Hz--压缩选型图表 50Hz



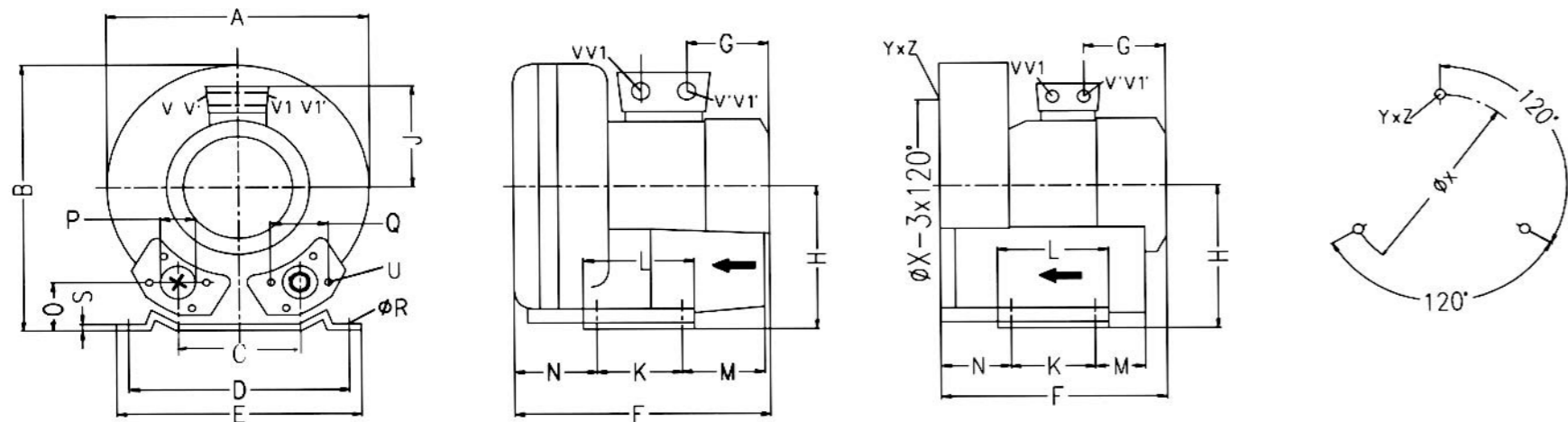
Vacuum Selection diagram 60 Hz--真空选型图表 60Hz

Compressor Selection Diagram 60 Hz--压缩选型图表 60Hz



EHS-2 单级 安装尺寸 / Single stage mounting dimensions

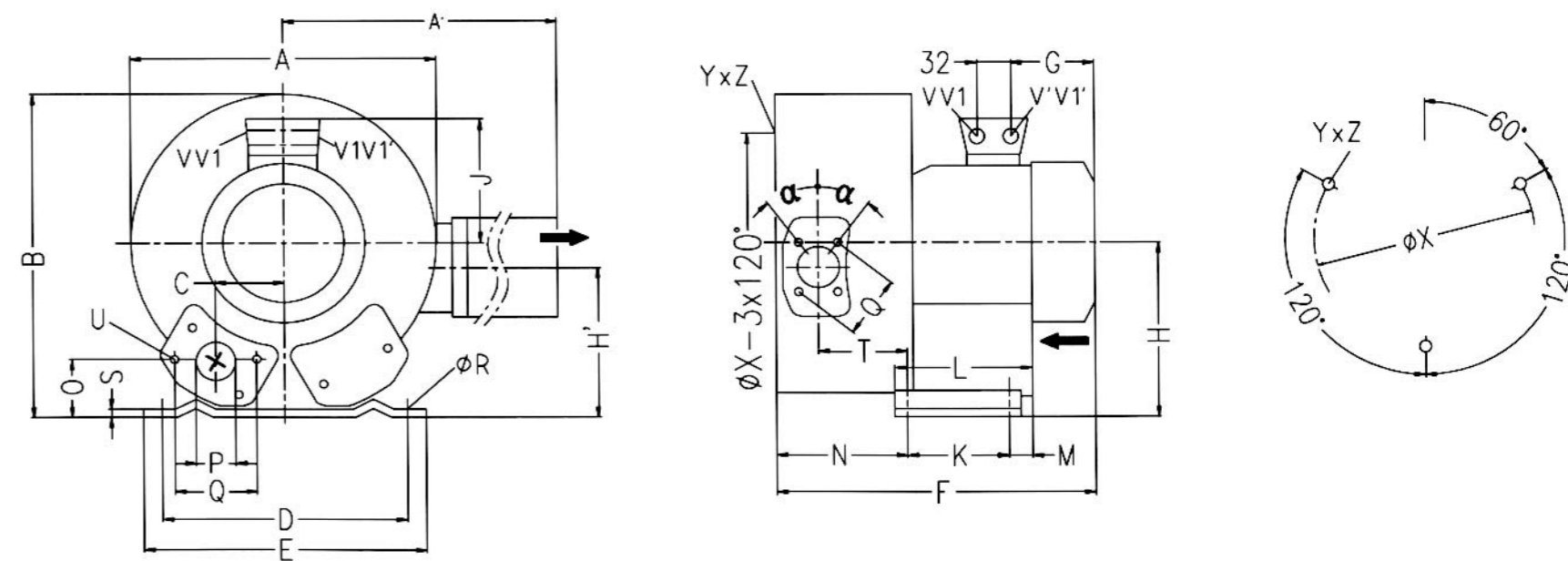
EHS-2



| 型号 Type | 相位 | A | B | C | D | E | F | G | H | J | K | L | M | N | O | P | Q | fR | S | U | V(1~) | V'(1~) | V1(3~) | V1'(3~) | YxZ | X-Holes | fX |
|-----------|----|-----|-----|----|-----|-----|-----|-----|-----|-----|----|-----|----|----|----|-------------------|----|----|-----|-------|---------|---------|---------|---------|-------|----------------|-----|
| EHS-229 | 3~ | 246 | 247 | 90 | 205 | 230 | 256 | 135 | 128 | 111 | 83 | 108 | 75 | 71 | 39 | G1 _{1/4} | 64 | 10 | 2.5 | M6x17 | | | M25x1.5 | M16x1.5 | M6x15 | 0° /120° /240° | 140 |
| EHS-239 | 3~ | 246 | 247 | 90 | 205 | 230 | 267 | 135 | 128 | 111 | 83 | 108 | 75 | 82 | 39 | G1 _{1/4} | 64 | 10 | 2.5 | M6x17 | | | M25x1.5 | M16x1.5 | M6x15 | 0° /120° /240° | 140 |
| EHS-249 | 3~ | 246 | 247 | 90 | 205 | 230 | 267 | 135 | 128 | 111 | 83 | 108 | 75 | 82 | 39 | G1 _{1/4} | 64 | 10 | 2.5 | M6x17 | | | M25x1.5 | M16x1.5 | M6x15 | 0° /120° /240° | 140 |
| EHS-239-A | 1~ | 246 | 247 | 90 | 205 | 230 | 267 | 135 | 128 | 111 | 83 | 108 | 75 | 71 | 39 | G1 _{1/4} | 64 | 10 | 2.5 | M6x17 | M16x1.5 | M25x1.5 | | | M6x15 | 0° /120° /240° | 140 |
| EHS-239-A | 1~ | 246 | 247 | 90 | 205 | 230 | 267 | 135 | 128 | 111 | 83 | 108 | 75 | 82 | 39 | G1 _{1/4} | 64 | 10 | 2.5 | M6x17 | M16x1.5 | M25x1.5 | | | M6x15 | 0° /120° /240° | 140 |

EHS-2 双级 安装尺寸 / Two stage mounting dimensions

EHS-2



| 型号 Type | 相位 | A | A' | B | C | D | E | F | G | H | H' | J | K | L | M | N | O | P | Q | fR | S | T | U | V(1~) | V'(1~) | V1(3~) | V1'(3~) | a | fX | YxZ | X-Holes |
|----------|----|-----|-----|-----|----|-----|-----|-----|-----|-----|-----|-----|----|-----|----|-----|----|-------------------|----|----|-----|----|-------|-------|--------|---------|---------|-----|-----|-------|-----------------|
| EHS-2308 | 3~ | 284 | 316 | 270 | 45 | 205 | 230 | 316 | 135 | 128 | 106 | 111 | 83 | 108 | 75 | 130 | 39 | G1 _{1/4} | 64 | 10 | 2.5 | 88 | M6x17 | | | M25x1.5 | M16x1.5 | 27° | 140 | M6x15 | 51° /171° /291° |

EHS-2/3AC (单、双极) 气环真空泵型号及性能参数表(IP55 50/60HZ)

EHS-2/ 3AC (Single,double impeller) Gas ring vacuum pump models and the performance parameters table (IP55 50/60HZ)

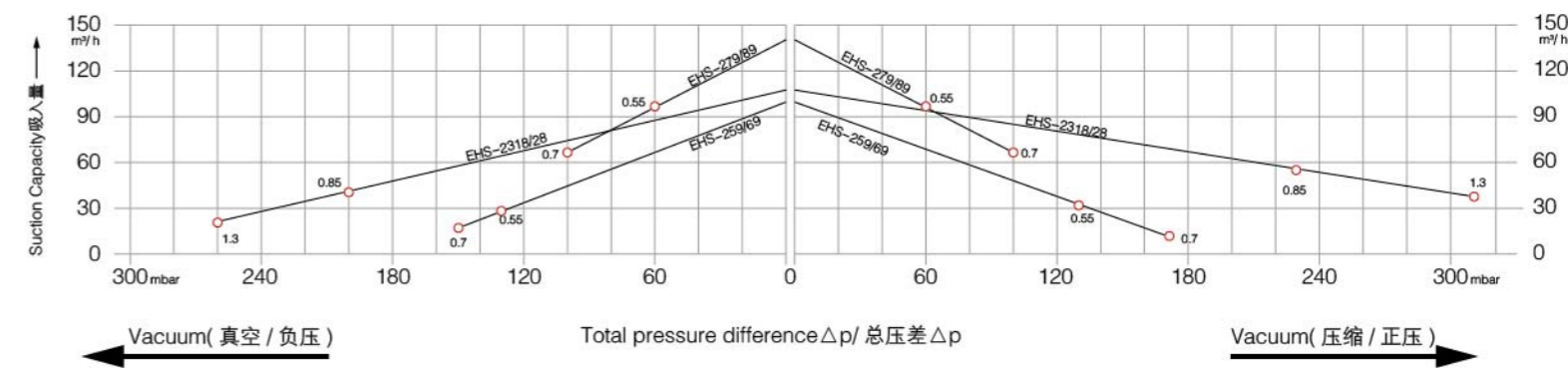


| 型号 (EHS2 3AC) Model | 单级 | 马达额定参数 | | | | 最大 排吸流量 Max airflow m³/h | 额定 真空压力 rated Vacuum mbar | 额定 压缩压力 rated compress mbar | 噪音 noises db(A) | 重量 weight Kg | |
|---------------------------|------------------|-----------------|-------------|--------------|----------|-----------------------------------|------------------------------------|--------------------------------------|-----------------------|--------------------|----|
| | 双级 | 频率 | 功率 | 电压 | | | | | | | 电流 |
| | single double | frequency HZ | power KW | voltage V | | | | | | | |
| EHS-259 | 单 | 50 | 0.55 | 200-240△ | 345-415Y | 2.8△/1.6Y | 100 | -120 | 130 | 55 | 11 |
| | | 60 | 0.63 | 220-275△ | 380-480Y | 3.0△/1.7Y | 120 | -120 | 140 | 57 | |
| EHS-269 | 单 | 50 | 0.7 | 200-240△ | 345-415Y | 3.8△/2.2Y | 100 | -150 | 170 | 55 | 12 |
| | | 60 | 0.83 | 220-275△ | 380-480Y | 3.8△/2.2Y | 120 | -160 | 180 | 57 | |
| EHS-279 | 单 | 50 | 0.55 | 200-240△ | 345-415Y | 2.8△/1.6Y | 140 | -60 | 60 | 56 | 12 |
| | | 60 | 0.63 | 220-275△ | 380-480Y | 3.0△/1.7Y | 165 | -40 | 40 | 58 | |
| EHS-289 | 单 | 50 | 0.7 | 200-240△ | 345-415Y | 3.8△/2.2Y | 140 | -100 | 100 | 56 | 13 |
| | | 60 | 0.83 | 220-275△ | 380-480Y | 3.8△/2.2Y | 165 | -110 | 100 | 58 | |
| EHS-2318 | 双 | 50 | 0.85 | 200-240△ | 345-415Y | 4.2△/2.4Y | 110 | -200 | 230 | 58 | 17 |
| | | 60 | 0.95 | 220-275△ | 380-480Y | 4.0△/2.3Y | 130 | -240 | 240 | 60 | |
| EHS-2328 | 双 | 50 | 1.3 | 200-240△ | 345-415Y | 5.7△/3.3Y | 110 | -260 | 310 | 58 | 18 |
| | | 60 | 1.5 | 220-275△ | 380-480Y | 6.0△/3.5Y | 130 | -260 | 320 | 60 | |

EHS-2 真空压缩选型曲线 3AC/ Vacuum compression type curve

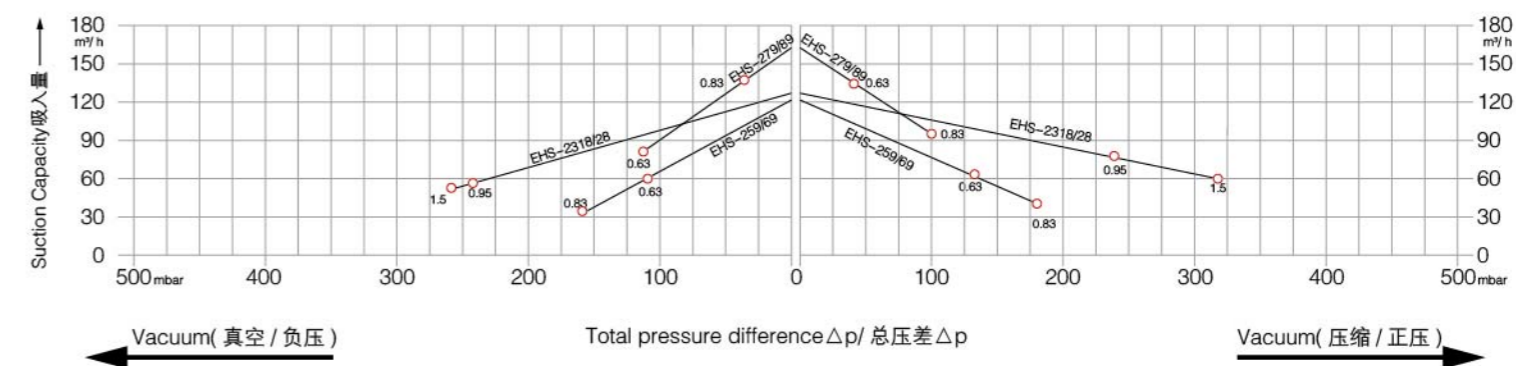
Vacuum Selection diagram 50 Hz--真空选型图表 50Hz

Compressor Selection Diagram 50 Hz--压缩选型图表 50Hz



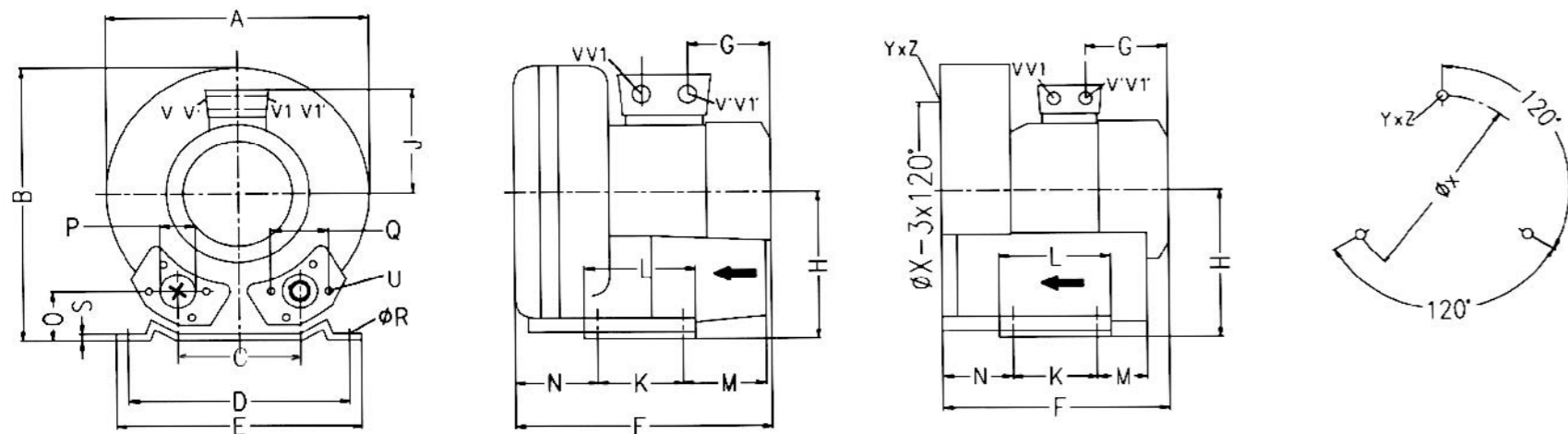
Vacuum Selection diagram 60 Hz--真空选型图表 60Hz

Compressor Selection Diagram 60 Hz--压缩选型图表 60Hz



EHS-2 单级 安装尺寸 / Single stage mounting dimensions

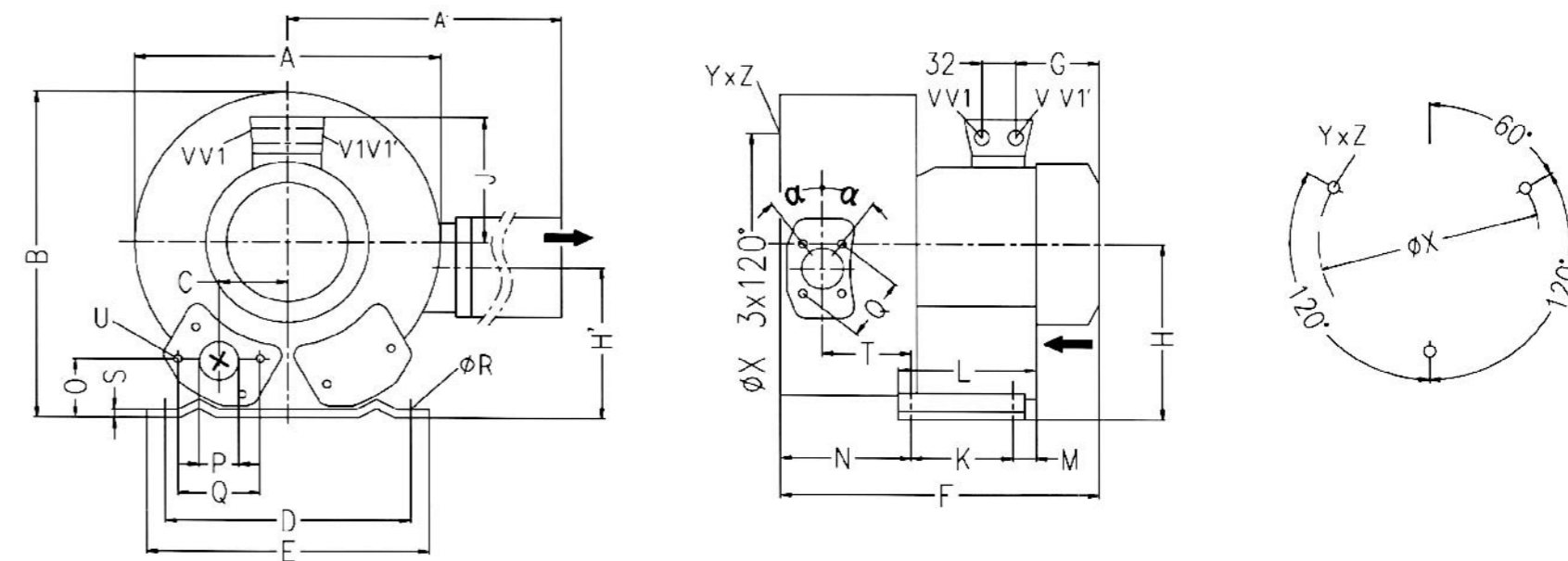
EHS-2



| 型号 Type | 相位 | A | B | C | D | E | F | G | H | J | K | L | M | N | O | P | Q | f | R | S | U | V(1~) | V'(1~) | V1(3~) | V1'(3~) | YxZ | X-Holes | f | X |
|----------|----|-----|-----|----|-----|-----|-----|-----|-----|-----|----|-----|----|----|----|------------------|----|----|-----|-------|---------|---------|---------|---------|---------|----------------|---------|---|---|
| EHS-259 | 3~ | 268 | 272 | 93 | 205 | 230 | 260 | 135 | 141 | 111 | 83 | 108 | 82 | 69 | 41 | G _{1/4} | 64 | 10 | 2.5 | M6x17 | | | M25x1.5 | M16x1.5 | M6x15 | 0° /120° /240° | 160 | | |
| EHS-269 | 3~ | 268 | 272 | 93 | 205 | 230 | 260 | 135 | 141 | 111 | 83 | 108 | 82 | 69 | 41 | G _{1/4} | 64 | 10 | 2.5 | M6x17 | | | M25x1.5 | M16x1.5 | M6x15 | 0° /120° /240° | 160 | | |
| EHS-279 | 3~ | 268 | 272 | 93 | 205 | 230 | 276 | 135 | 141 | 111 | 83 | 108 | 82 | 85 | 41 | G _{1/4} | 64 | 10 | 2.5 | M6x17 | | | M25x1.5 | M16x1.5 | M6x15 | 0° /120° /240° | 160 | | |
| EHS-289 | 3~ | 268 | 272 | 93 | 205 | 230 | 276 | 135 | 141 | 111 | 83 | 108 | 82 | 85 | 41 | G _{1/4} | 64 | 10 | 2.5 | M6x17 | | | M25x1.5 | M16x1.5 | M6x15 | 0° /120° /240° | 160 | | |
| EHS-249A | 1~ | 268 | 272 | 93 | 205 | 230 | 260 | 135 | 141 | 111 | 83 | 108 | 82 | 69 | 41 | G _{1/4} | 64 | 10 | 2.5 | M6x17 | M25x1.5 | M16x1.5 | | | M6x15 | 0° /120° /240° | 160 | | |
| EHS-259A | 1~ | 268 | 272 | 93 | 205 | 230 | 260 | 135 | 141 | 111 | 83 | 108 | 82 | 69 | 41 | G _{1/4} | 64 | 10 | 2.5 | M6x17 | M25x1.5 | M16x1.5 | | | M6x15 | 0° /120° /240° | 160 | | |
| EHS-279A | 1~ | 268 | 272 | 93 | 205 | 230 | 276 | 135 | 141 | 111 | 83 | 108 | 82 | 85 | 41 | G _{1/4} | 64 | 10 | 2.5 | M6x17 | M25x1.5 | M16x1.5 | | | M6x15 | 0° /120° /240° | 160 | | |

EHS-2 双级 安装尺寸 / Two stage mounting dimensions

EHS-2



| 型号 Type | 相位 | A | A' | B | C | D | E | F | G | H | H' | J | K | L | M | N | O | P | Q | f | R | S | T | U | V(1~) | V'(1~) | V1(3~) | V1'(3~) | a | f | X | YxZ | X-Holes |
|----------|----|-----|-----|-----|----|-----|-----|-----|-----|-----|-----|-----|----|-----|----|-----|----|------------------|----|----|-----|----|-------|---------|---------|---------|---------|---------|-----|-------|-----------------|-----|---------|
| EHS-2318 | 3~ | 293 | 324 | 286 | 47 | 205 | 230 | 354 | 160 | 141 | 114 | 120 | 83 | 108 | 82 | 138 | 41 | G _{1/4} | 64 | 10 | 2.5 | 92 | M6x17 | | | M25x1.5 | M16x1.5 | 27° | 160 | M6x15 | 51° /171° /291° | | |
| EHS-2328 | 3~ | 293 | 324 | 286 | 47 | 205 | 230 | 354 | 160 | 141 | 114 | 120 | 83 | 108 | 82 | 138 | 41 | G _{1/4} | 64 | 10 | 2.5 | 92 | M6x17 | | | M25x1.5 | M16x1.5 | 27° | 160 | M6x15 | 51° /171° /291° | | |
| EHS-269A | 1~ | 293 | 324 | 286 | 47 | 205 | 230 | 354 | 160 | 141 | 114 | 120 | 83 | 108 | 82 | 138 | 41 | G _{1/4} | 64 | 10 | 2.5 | 92 | M6x17 | M25x1.5 | M16x1.5 | | | 27° | 160 | M6x15 | 51° /171° /291° | | |

EHS-3/3AC (单、双级) 气环真空泵型号及性能参数表(IP55 50/60HZ)

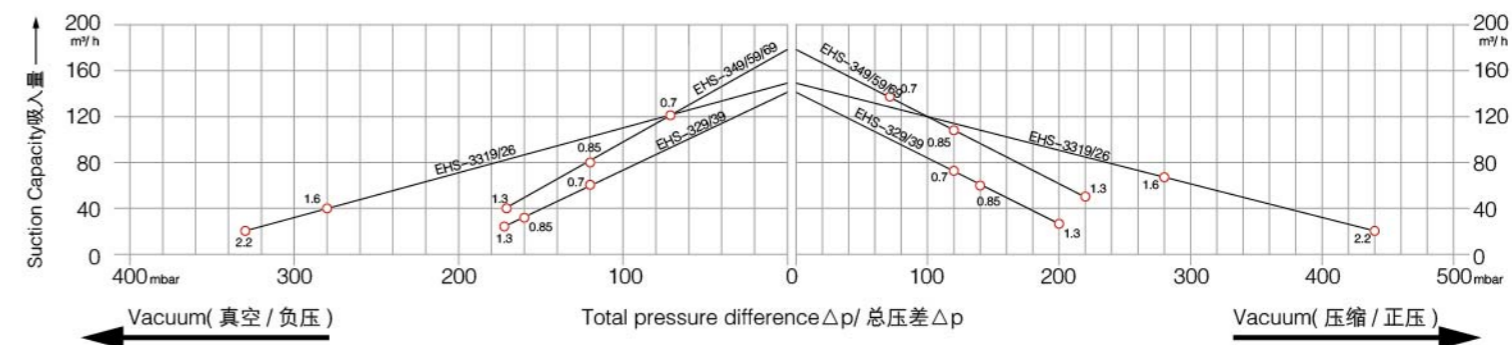
EHS-3 3AC (Single,double impeller) Gas ring vacuum pump models and the performance parameters table (IP55 50/60HZ)

| 型号 (EHS-3 3AC) Model | 单级 | 马达额定参数 | | | | 最大 排吸流量 Max airflow m ³ /h | 额定 真空压力 rated Vacuum mbar | 额定 压缩压力 rated compress mbar | 噪音 noises db(A) | 重量 weight Kg | |
|----------------------------|------------------|-----------------|-------------|--------------|--------------|--|------------------------------------|--------------------------------------|-----------------------|--------------------|----|
| | 双级 | 频率 | 功率 | 电压 | 电流 | | | | | | |
| | single double | frequency HZ | power KW | voltage V | current A | | | | | | |
| EHS-329 | 单 | 50 | 0.7 | 200-240△ | 345-415Y | 3.8△/2.2Y | 145 | -120 | 120 | 63 | 13 |
| | | 60 | 0.83 | 220-275△ | 380-480Y | 3.75△/2.15Y | 175 | -130 | 130 | 64 | |
| EHS-329-1 | 单 | 50 | 0.85 | 200-240△ | 345-415Y | 4.0△/2.3Y | 145 | -160 | 160 | 63 | 16 |
| | | 60 | 0.95 | 220-275△ | 380-480Y | 3.85△/2.25Y | 175 | -160 | 160 | 64 | |
| EHS-339 | 单 | 50 | 1.3 | 200-240△ | 345-415Y | 5.7△/3.3Y | 145 | -170 | 200 | 63 | 17 |
| | | 60 | 1.5 | 220-275△ | 380-480Y | 6.0△/3.5Y | 175 | -210 | 220 | 64 | |
| EHS-349 | 单 | 50 | 0.7 | 200-240△ | 345-415Y | 3.8△/2.2Y | 180 | -70 | 70 | 64 | 14 |
| | | 60 | 0.83 | 220-275△ | 380-480Y | 3.8△/2.2Y | 210 | -50 | 50 | 65 | |
| EHS-359 | 单 | 50 | 0.85 | 200-240△ | 345-415Y | 4.2△/2.4Y | 180 | -120 | 120 | 64 | 17 |
| | | 60 | 0.95 | 220-275△ | 380-480Y | 4.0△/2.3Y | 210 | -90 | 70 | 65 | |
| EHS-369 | 单 | 50 | 1.3 | 200-240△ | 345-415Y | 6.6△/3.8Y | 180 | -170 | 220 | 64 | 18 |
| | | 60 | 1.5 | 220-275△ | 380-480Y | 6.9△/4.0Y | 210 | -200 | 160 | 65 | |
| EHS-3319 | 双 | 50 | 1.6 | 200-240△ | 345-415Y | 7.5△/4.3Y | 150 | -280 | 280 | 66 | 25 |
| | | 60 | 2.05 | 220-275△ | 380-480Y | 7.6△/4.4Y | 180 | -320 | 310 | 69 | |
| EHS-3326 | 双 | 50 | 2.2 | 200-240△ | 345-415Y | 9.7△/5.6Y | 150 | -330 | 440 | 66 | 27 |
| | | 60 | 2.55 | 220-275△ | 380-480Y | 10△/5.8Y | 180 | -350 | 420 | 69 | |

EHS-3 真空压缩选型曲线 3AC/ Vacuum compression type curve

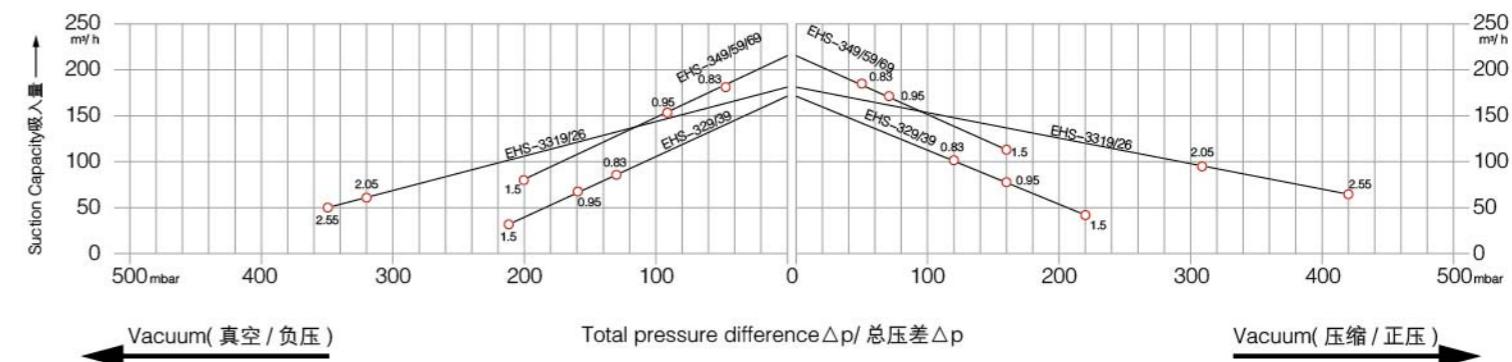
Vacuum Selection diagram 50 Hz--真空选型图表 50Hz

Compressor Selection Diagram 50 Hz--压缩选型图表 50Hz



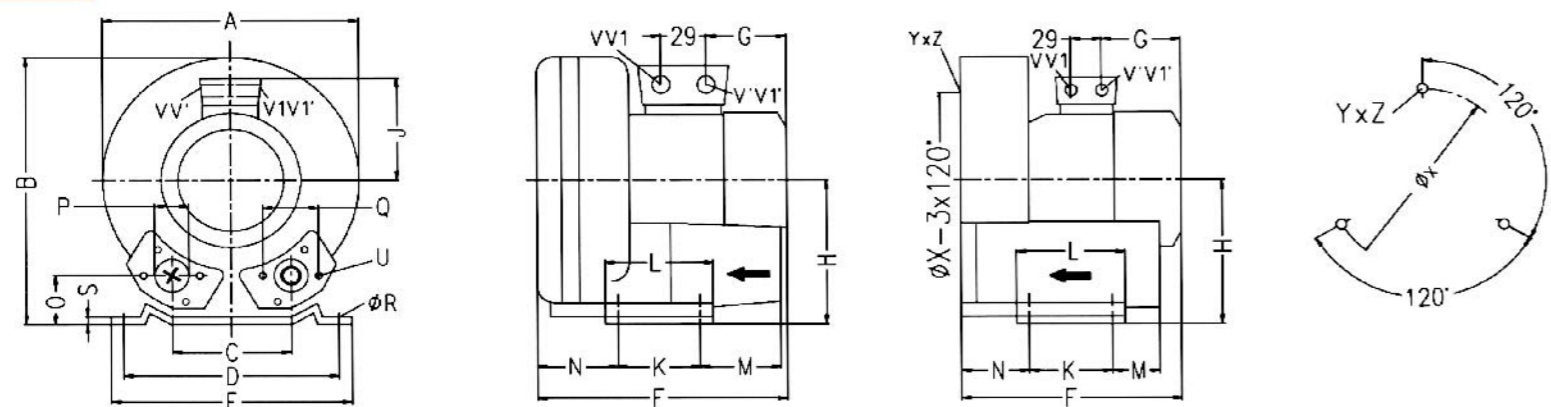
Vacuum Selection diagram 60 Hz--真空选型图表 60Hz

Compressor Selection Diagram 60 Hz--压缩选型图表 60Hz



EHS-3 单级 安装尺寸 / Single stage mounting dimensions

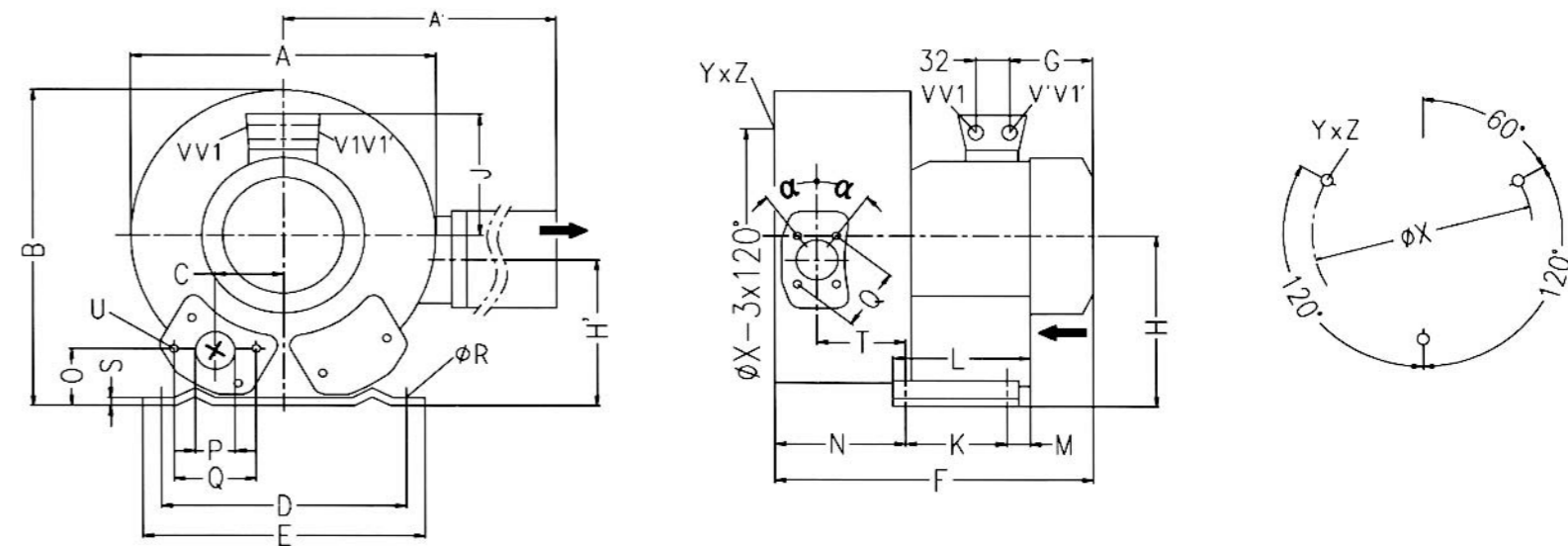
EHS-3



| 型号 Type | 相位 | A | B | C | D | E | F | G | H | J | K | L | M | N | O | P | Q | fR | S | U | V(1~) | V'(1~) | V1(3~) | V1'(3~) | YxZ | X-Holes | fX |
|-----------|----|-----|-----|-----|-----|-----|-----|-----|-----|-----|----|-----|----|----|----|------------------|----|----|---|-------|---------|---------|---------|---------|-------|----------------|-----|
| EHS-329 | 3~ | 286 | 302 | 115 | 225 | 255 | 269 | 135 | 154 | 111 | 95 | 130 | 70 | 75 | 46 | G _{1/2} | 72 | 12 | 3 | M6x19 | | | M25x1.5 | M16x1.5 | M6x15 | 0° /120° /240° | 174 |
| EHS-329-1 | 3~ | 286 | 302 | 115 | 225 | 255 | 292 | 160 | 154 | 120 | 95 | 130 | 70 | 75 | 46 | G _{1/2} | 72 | 12 | 3 | M6x19 | | | M25x1.5 | M16x1.5 | M6x15 | 0° /120° /240° | 174 |
| EHS-339 | 3~ | 286 | 302 | 115 | 225 | 255 | 292 | 160 | 154 | 120 | 95 | 130 | 70 | 75 | 46 | G _{1/2} | 72 | 12 | 3 | M6x19 | | | M25x1.5 | M16x1.5 | M6x15 | 0° /120° /240° | 174 |
| EHS-349 | 3~ | 286 | 302 | 115 | 225 | 255 | 288 | 135 | 154 | 111 | 95 | 130 | 70 | 75 | 46 | G _{1/2} | 72 | 12 | 3 | M6x19 | | | M25x1.5 | M16x1.5 | M6x15 | 0° /120° /240° | 174 |
| EHS-359 | 3~ | 286 | 302 | 115 | 225 | 255 | 311 | 160 | 154 | 120 | 95 | 130 | 70 | 75 | 46 | G _{1/2} | 72 | 12 | 3 | M6x19 | | | M25x1.5 | M16x1.5 | M6x15 | 0° /120° /240° | 174 |
| EHS-369 | 3~ | 286 | 302 | 115 | 225 | 255 | 311 | 160 | 154 | 120 | 95 | 130 | 70 | 75 | 46 | G _{1/2} | 72 | 12 | 3 | M6x19 | | | M25x1.5 | M16x1.5 | M6x15 | 0° /120° /240° | 174 |
| EHS-329A | 1~ | 286 | 302 | 115 | 225 | 255 | 294 | 160 | 154 | 120 | 95 | 130 | 70 | 75 | 46 | G _{1/2} | 72 | 12 | 3 | M6x19 | M16x1.5 | M25x1.5 | M25x1.5 | M16x1.5 | M6x15 | 0° /120° /240° | 174 |
| EHS-339A | 1~ | 286 | 302 | 115 | 225 | 255 | 294 | 160 | 154 | 120 | 95 | 130 | 70 | 75 | 46 | G _{1/2} | 72 | 12 | 3 | M6x19 | M16x1.5 | M25x1.5 | | | M6x15 | 0° /120° /240° | 174 |
| EHS-349A | 1~ | 286 | 302 | 115 | 225 | 255 | 311 | 160 | 154 | 120 | 95 | 130 | 70 | 75 | 46 | G _{1/2} | 72 | 12 | 3 | M6x19 | M16x1.5 | M25x1.5 | | | M6x15 | 0° /120° /240° | 174 |
| EHS-359A | 1~ | 286 | 302 | 115 | 225 | 255 | 311 | 160 | 154 | 120 | 95 | 130 | 70 | 75 | 46 | G _{1/2} | 72 | 12 | 3 | M6x19 | M16x1.5 | M25x1.5 | | | M6x15 | 0° /120° /240° | 174 |

EHS-3 双级 安装尺寸 / Two stage mounting dimensions

EHS-3



| 型号 Type | 相位 | A | A' | B | C | D | E | F | G | H | H' | J | K | L | M | N | O | P | Q | fR | S | T | U | V(1~) | V'(1~) | V1(3~) | V1'(3~) | a | fX | YxZ | X-Holes |
|-----------|----|-----|-----|-----|----|-----|-----|-----|-----|-----|-----|-----|----|-----|----|-----|----|------------------|----|----|---|-----|-------|---------|---------|---------|---------|-----|-----|-------|-----------------|
| EHS-3319 | 3~ | 322 | 324 | 315 | 58 | 225 | 255 | 401 | 191 | 154 | 153 | 128 | 95 | 130 | 73 | 151 | 45 | G _{1/2} | 72 | 12 | 3 | 104 | M6x19 | | | M25x1.5 | M16x1.5 | 28° | 174 | M6x15 | 51° /171° /291° |
| EHS-3326 | 3~ | 322 | 324 | 315 | 58 | 225 | 255 | 401 | 191 | 154 | 153 | 128 | 95 | 130 | 73 | 151 | 45 | G _{1/2} | 72 | 12 | 3 | 104 | M6x19 | | | M25x1.5 | M16x1.5 | 28° | 174 | M6x15 | 51° /171° /291° |
| EHS-3315A | 1~ | 322 | 324 | 315 | 58 | 225 | 255 | 401 | 191 | 154 | 153 | 128 | 95 | 130 | 73 | 151 | 45 | G _{1/2} | 72 | 12 | 3 | 104 | M6x19 | M16x1.5 | M25x1.5 | | | 28° | 174 | M6x15 | 51° /171° /291° |

EHS-4/3AC (单、双级) 气环真空泵型号及性能参数表(IP55 50/60HZ)

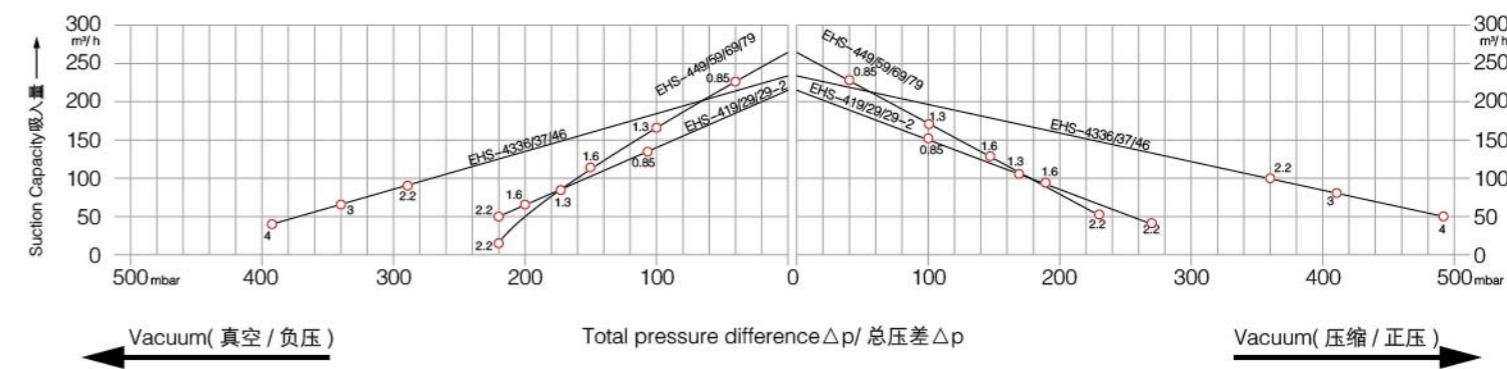
EHS-4/ 3AC (Single,double impeller) Gas ring vacuum pump models and the performance parameters table (IP55 50/60HZ)

| 型号 (EHS-4 3AC) Model | 单级 | 频率 frequency HZ | 马达额定参数 | | | 最大 排吸流量 Max airflow m³/h | 额定 真空压力 rated Vacuum mbar | 额定 压缩压力 rated compress mbar | 噪音 noises db(A) | 重量 weight Kg | |
|----------------------------|------------------|-----------------------|-------------|--------------|--------------|-----------------------------------|------------------------------------|--------------------------------------|-----------------------|--------------------|----|
| | 双级 | | 功率 | 电压 | 电流 | | | | | | |
| | single double | | power KW | voltage V | current A | | | | | | |
| EHS-419 | 单 | 50 | 0.85 | 200-240△ | 345-415Y | 4.2△/2.3Y | 210 | -110 | 100 | 64 | 20 |
| | | 60 | 0.95 | 220-275△ | 380-480Y | 4.0△/2.3Y | 255 | -80 | 70 | 70 | |
| EHS-419-2 | 单 | 50 | 1.3 | 200-240△ | 345-415Y | 6.6△/3.8Y | 210 | -170 | 170 | 64 | 22 |
| | | 60 | 1.5 | 220-275△ | 380-480Y | 6.9△/4.0Y | 255 | -150 | 140 | 70 | |
| EHS-429 | 单 | 50 | 1.6 | 200-240△ | 345-415Y | 7.5△/4.3Y | 210 | -200 | 190 | 64 | 23 |
| | | 60 | 2.05 | 220-275△ | 380-480Y | 7.6△/4.4Y | 255 | -220 | 210 | 70 | |
| EHS-439 | 单 | 50 | 2.2 | 200-240△ | 345-415Y | 9.7△/5.6Y | 210 | -220 | 270 | 64 | 26 |
| | | 60 | 2.55 | 220-275△ | 380-480Y | 10.3△/6.0Y | 255 | -260 | 290 | 70 | |
| EHS-449 | 单 | 50 | 0.85 | 200-240△ | 345-415Y | 4.0△/2.3Y | 270 | -40 | 40 | 65 | 21 |
| | | 60 | 0.95 | 220-275△ | 380-480Y | 4.2△/2.4Y | 330 | -40 | 40 | 71 | |
| EHS-459 | 单 | 50 | 1.3 | 200-240△ | 345-415Y | 6.6△/3.8Y | 270 | -100 | 100 | 65 | 23 |
| | | 60 | 1.5 | 380-480△ | 380-480Y | 6.9△/4.0Y | 330 | -70 | 50 | 71 | |
| EHS-469 | 单 | 50 | 1.6 | 200-240△ | 345-415Y | 7.5△/4.3Y | 270 | -150 | 150 | 65 | 24 |
| | | 60 | 2.05 | 380-480△ | 380-480Y | 7.6△/4.4Y | 330 | -150 | 130 | 71 | |
| EHS-479 | 单 | 50 | 2.2 | 200-240△ | 345-415Y | 9.7△/5.6Y | 270 | -220 | 230 | 65 | 26 |
| | | 60 | 2.55 | 380-480△ | 380-480Y | 10.3△/6Y | 330 | -260 | 210 | 71 | |
| EHS-4336 | 双 | 50 | 2.2 | 200-240△ | 345-415Y | 9.7△/5.6Y | 230 | -290 | 360 | 72 | 35 |
| | | 60 | 2.55 | 380-480△ | 380-480Y | 10.3△/6.0Y | 275 | -350 | 330 | 74 | |
| EHS-4337 | 双 | 50 | 3 | 200-240△ | 345-415Y | 12.5△/7.2Y | 230 | -340 | 410 | 72 | 39 |
| | | 60 | 3.45 | 380-480△ | 380-480Y | 12.6△/7.3Y | 275 | -380 | 360 | 74 | |
| EHS-4346 | 双 | 50 | 4 | 345-415△ | 600-720Y | 10△/5.8Y | 230 | -390 | 490 | 72 | 44 |
| | | 60 | 4.6 | 380-480△ | 660-720Y | 9.9△/5.71Y | 275 | -410 | 480 | 74 | |

EHS-4 真空压缩选型曲线 3AC/ Vacuum compression type curve

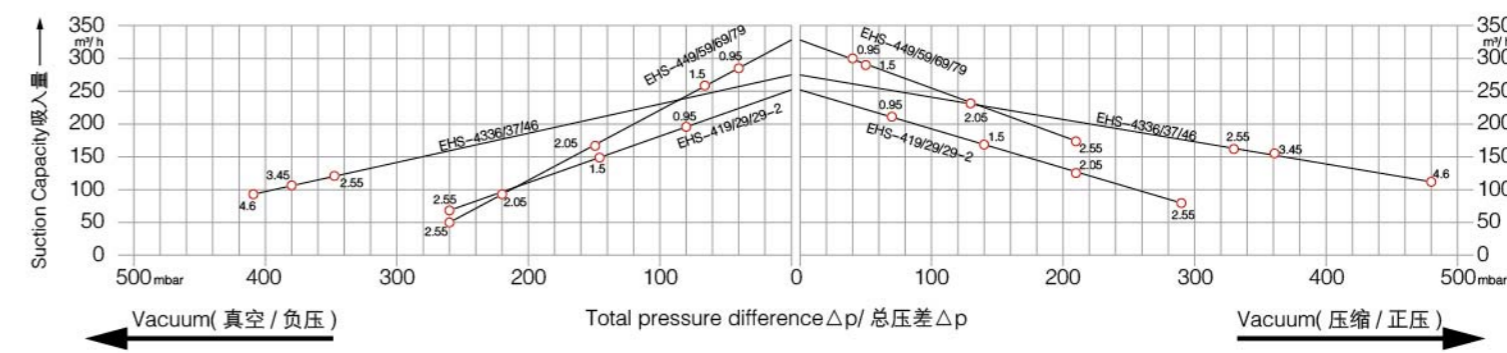
Vacuum Selection diagram 50 Hz--真空选型图表 50Hz

Compressor Selection Diagram 50 Hz--压缩选型图表 50Hz



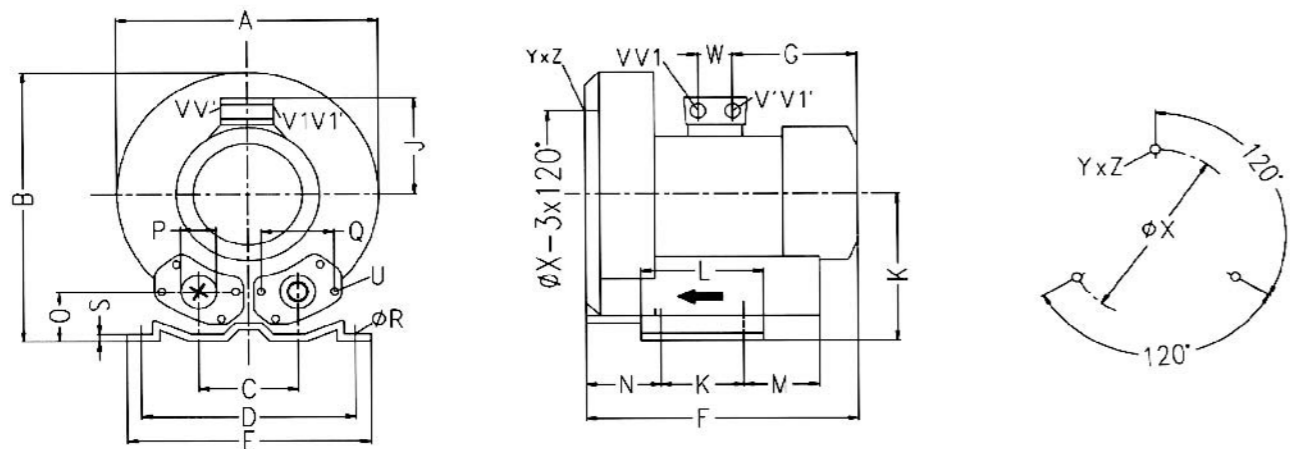
Vacuum Selection diagram 60 Hz--真空选型图表 60Hz

Compressor Selection Diagram 60 Hz--压缩选型图表 60Hz



EHS-4 单级 安装尺寸 / Single stage mounting dimensions

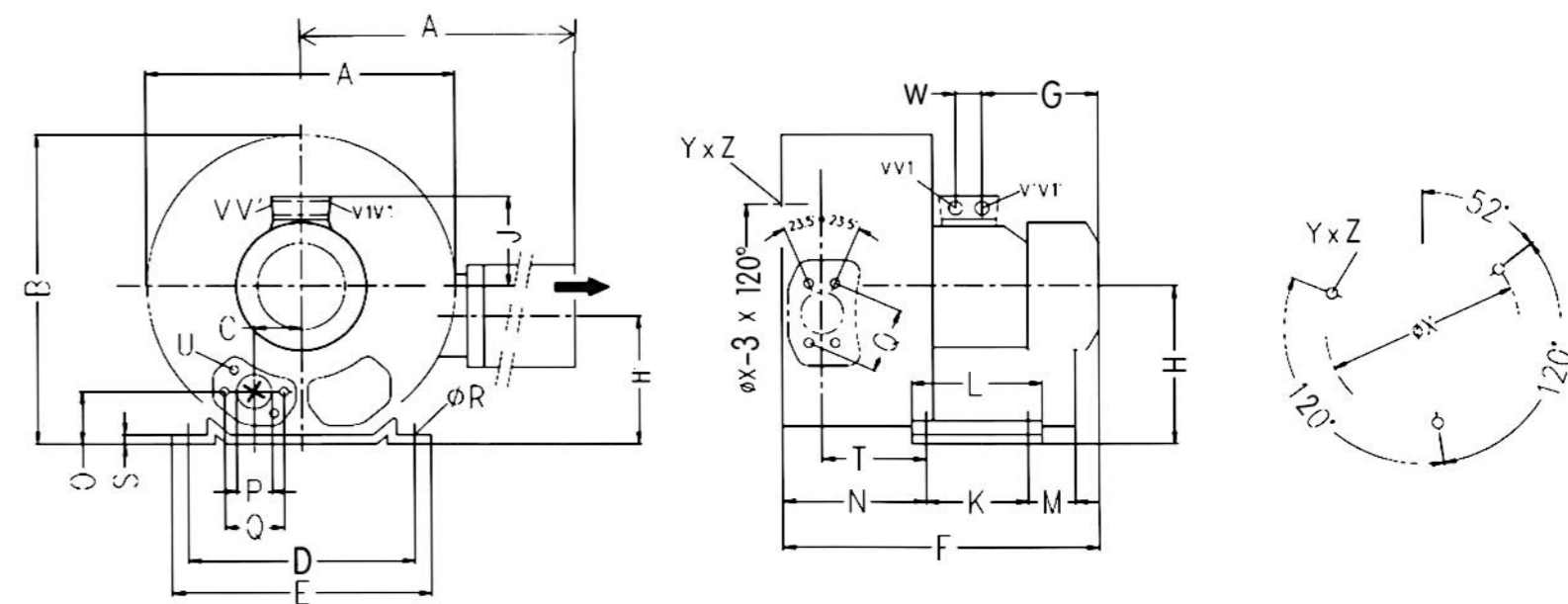
EHS-4



| 型号 Type | 相位 | A | B | C | D | E | F | G | H | J | K | L | M | N | O | fP | Q | fR | S | U | V(1~) | V'(1~) | V1(3~) | V1'(3~) | YxZ | X-Holes | fX | W |
|------------|----|-----|-----|-----|-----|-----|-----|-----|-----|-----|-----|-----|----|----|----|----|----|----|---|-------|---------|---------|---------|---------|-------|----------------|-----|----|
| EHS-419 | 3~ | 334 | 337 | 120 | 260 | 295 | 314 | 160 | 175 | 120 | 115 | 155 | 96 | 87 | 48 | 55 | 83 | 14 | 4 | M8x17 | | | M25x1.5 | M16x1.5 | M8x20 | 0° /120° /240° | 200 | 29 |
| EHS-429-2 | 3~ | 334 | 337 | 120 | 260 | 295 | 314 | 160 | 175 | 120 | 115 | 155 | 96 | 87 | 48 | 55 | 83 | 14 | 4 | M8x17 | | | M25x1.5 | M16x1.5 | M8x20 | 0° /120° /240° | 200 | 29 |
| EHS-429 | 3~ | 334 | 337 | 120 | 260 | 295 | 346 | 191 | 175 | 128 | 115 | 155 | 96 | 87 | 48 | 55 | 83 | 14 | 4 | M8x17 | | | M25x1.5 | M16x1.5 | M8x20 | 0° /120° /240° | 200 | 29 |
| EHS-439 | 3~ | 334 | 337 | 120 | 260 | 295 | 346 | 191 | 175 | 128 | 115 | 155 | 96 | 87 | 48 | 55 | 83 | 14 | 4 | M8x17 | | | M25x1.5 | M16x1.5 | M8x20 | 0° /120° /240° | 200 | 29 |
| EHS-449 | 3~ | 334 | 337 | 120 | 260 | 295 | 334 | 160 | 175 | 120 | 115 | 155 | 96 | 87 | 48 | 55 | 83 | 14 | 4 | M8x17 | | | M25x1.5 | M16x1.5 | M8x20 | 0° /120° /240° | 200 | 29 |
| EHS-459 | 3~ | 334 | 337 | 120 | 260 | 295 | 334 | 160 | 175 | 120 | 115 | 155 | 96 | 87 | 48 | 55 | 83 | 14 | 4 | M8x17 | | | M25x1.5 | M16x1.5 | M8x20 | 0° /120° /240° | 200 | 29 |
| EHS-469 | 3~ | 334 | 337 | 120 | 260 | 295 | 365 | 191 | 175 | 128 | 115 | 155 | 96 | 87 | 48 | 55 | 83 | 14 | 4 | M8x17 | | | M25x1.5 | M16x1.5 | M8x20 | 0° /120° /240° | 200 | 29 |
| EHS-479 | 3~ | 334 | 337 | 120 | 260 | 295 | 365 | 191 | 175 | 128 | 115 | 155 | 96 | 87 | 48 | 55 | 83 | 14 | 4 | M8x17 | | | M25x1.5 | M16x1.5 | M8x20 | 0° /120° /240° | 200 | 29 |
| EHS-429-2A | 1~ | 334 | 337 | 120 | 260 | 295 | 314 | 160 | 175 | 120 | 115 | 155 | 96 | 87 | 48 | 55 | 83 | 14 | 4 | M8x17 | M16x1.5 | M25x1.5 | | | M8x20 | 0° /120° /240° | 200 | 29 |
| EHS-439A | 1~ | 334 | 337 | 120 | 260 | 295 | 345 | 191 | 175 | 128 | 115 | 155 | 96 | 87 | 48 | 55 | 83 | 14 | 4 | M8x17 | M16x1.5 | M25x1.5 | | | M8x20 | 0° /120° /240° | 200 | 29 |
| EHS-429A | 1~ | 334 | 337 | 120 | 260 | 295 | 334 | 160 | 175 | 120 | 115 | 155 | 96 | 87 | 48 | 55 | 83 | 14 | 4 | M8x17 | M16x1.5 | M25x1.5 | | | M8x20 | 0° /120° /240° | 200 | 29 |
| EHS-449A | 1~ | 334 | 337 | 120 | 260 | 295 | 365 | 191 | 175 | 128 | 115 | 155 | 96 | 87 | 48 | 55 | 83 | 14 | 4 | M8x17 | M16x1.5 | M25x1.5 | | | M8x20 | 0° /120° /240° | 200 | 29 |

EHS-4 双级 安装尺寸 / Two stage mounting dimensions

EHS-4



| 型号 Type | 相位 | A | A' | B | C | D | E | F | G | H | H' | J | K | L | M | N | O | fP | Q | fR | S | T | U | V | V' | V1 | V1' | fX | YxZ | X-Holes | W |
|----------|----|-----|-----|-----|----|-----|-----|-----|-----|-----|-----|-----|-----|-----|----|-----|----|----|----|----|---|-----|-------|---------|---------|---------|---------|-----|-------|------------------|----|
| EHS-4336 | 3~ | 372 | 411 | 371 | 60 | 260 | 295 | 465 | 190 | 175 | 144 | 135 | 115 | 155 | 98 | 171 | 48 | 55 | 83 | 14 | 4 | 116 | M8x17 | M32x1.5 | M32x1.5 | M32x1.5 | M32x1.5 | 200 | M8x20 | 51.5°/17.5°/291° | 42 |
| EHS-4337 | 3~ | 372 | 411 | 371 | 60 | 260 | 295 | 465 | 190 | 175 | 144 | 135 | 115 | 155 | 98 | 171 | 48 | 55 | 83 | 14 | 4 | 116 | M8x17 | M32x1.5 | M32x1.5 | M32x1.5 | M32x1.5 | 200 | M8x20 | 51.5°/17.5°/291° | 42 |
| EHS-4346 | 3~ | 372 | 411 | 371 | 60 | 260 | 295 | 499 | 224 | 175 | 144 | 135 | 115 | 155 | 98 | 171 | 48 | 55 | 83 | 14 | 4 | 116 | M8x17 | M32x1.5 | M32x1.5 | M32x1.5 | M32x1.5 | 200 | M8x20 | 51.5°/17.5°/291° | 42 |

EHS-5/3AC (单、双极) 气环真空泵型号及性能参数表(IP55 50/60HZ)

EHS-5/ 3AC (Single,double impeller) Gas ring vacuum pump models and the performance parameters table (IP55 50/60HZ)

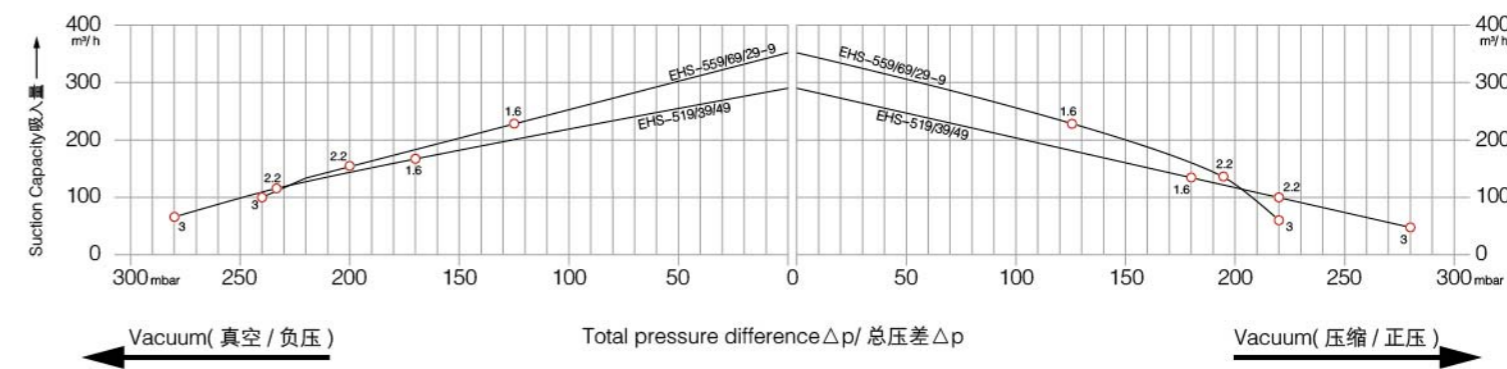


| 型号 (EHS 3AC) Model | 单级 | 马达额定参数 | | | | 最大 排吸流量 Max airflow m³/h | 额定 真空压力 rated Vacuum mbar | 额定 压缩压力 rated compress mbar | 噪音 noises db(A) | 重量 weight Kg | |
|--------------------------|------------------|-----------------|-------------|--------------|--------------|-----------------------------------|------------------------------------|--------------------------------------|-----------------------|--------------------|----|
| | 双级 | 频率 | 功率 | 电压 | 电流 | | | | | | |
| | single double | frequency HZ | power KW | voltage V | current A | | | | | | |
| EHS-519 | 单 | 50 | 1.6 | 200-240△ | 345-415Y | 8.5△/4.9Y | 265 | -170 | 180 | 68 | 25 |
| | | 60 | 2.05 | 220-275△ | 380-480Y | 8.8△/5.1Y | 315 | -180 | 190 | 70 | |
| EHS-539 | 单 | 50 | 2.2 | 200-240△ | 345-415Y | 9.7△/5.6Y | 265 | -235 | 220 | 69 | 28 |
| | | 60 | 2.55 | 220-275△ | 380-480Y | 10.3△/6.0Y | 315 | -245 | 230 | 72 | |
| EHS-549 | 单 | 50 | 3 | 200-240△ | 345-415Y | 12.5△/7.2Y | 265 | -280 | 280 | 69 | 34 |
| | | 60 | 3.45 | 220-275△ | 380-480Y | 12.5△/7.3Y | 315 | -260 | 270 | 72 | |
| EHS-559 | 单 | 50 | 1.6 | 200-240△ | 345-415Y | 8.5△/4.9Y | 345 | -125 | 125 | 70 | 26 |
| | | 60 | 2.05 | 220-275△ | 380-480Y | 8.8△/5.1Y | 415 | -105 | 130 | 73 | |
| EHS-529-9 | 单 | 50 | 2.2 | 200-240△ | 345-415Y | 9.7△/5.6Y | 345 | -200 | 195 | 70 | 29 |
| | | 60 | 2.55 | 220-275△ | 380-480Y | 10.3△/6.0Y | 415 | -170 | 195 | 73 | |
| EHS-569 | 单 | 50 | 3 | 200-240△ | 345-415Y | 12.5△/7.2Y | 345 | -240 | 220 | 70 | 35 |
| | | 60 | 3.45 | 220-275△ | 380-480Y | 12.6△/7.3Y | 415 | -210 | 220 | 73 | |

EHS-5 真空压缩选型曲线 3AC/ Vacuum compression type curve

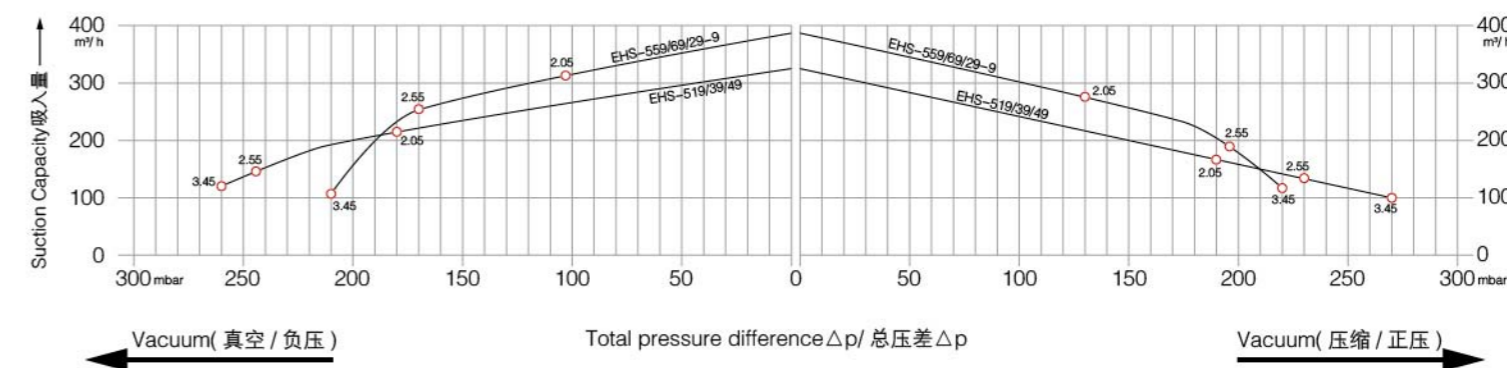
Vacuum Selection diagram 50 Hz--真空选型图表 50Hz

Compressor Selection Diagram 50 Hz--压缩选型图表 50Hz



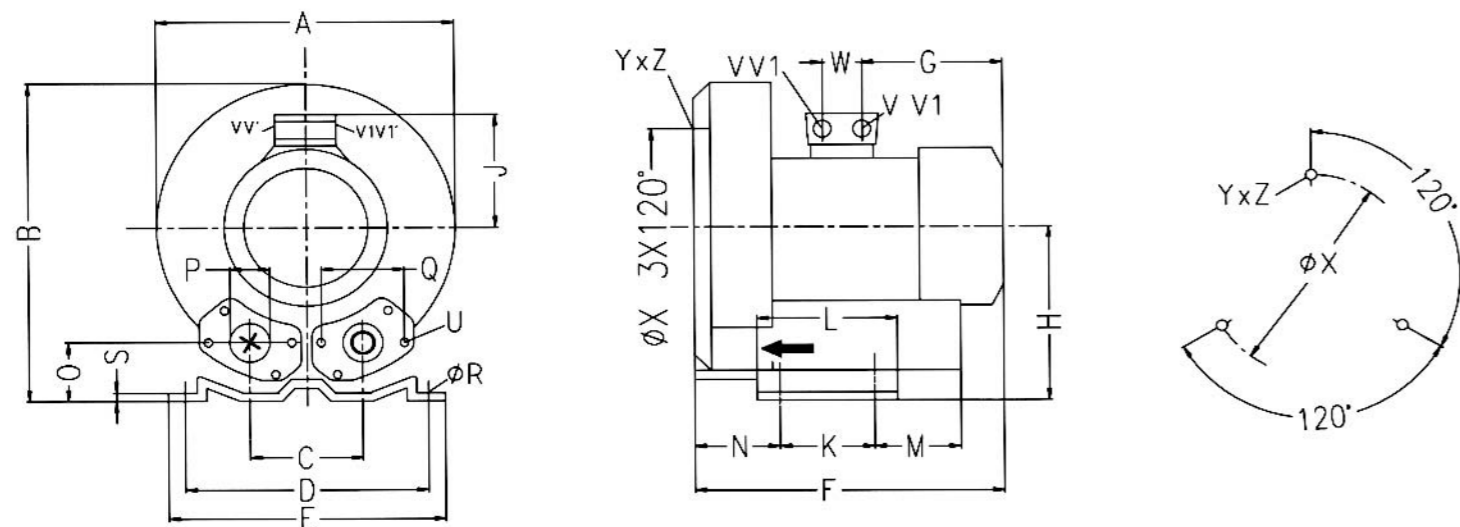
Vacuum Selection diagram 60 Hz--真空选型图表 60Hz

Compressor Selection Diagram 60 Hz--压缩选型图表 60Hz



EHS-5 单级安装尺寸 / Single stage mounting dimensions

EHS-5



| 型号 Type | 相位 | A | B | C | D | E | F | G | H | J | K | L | M | N | O | ∠P | ∠Q | ∠R | S | U | V(1~) | V'(1~) | V1(3~) | V1'(3~) | YxZ | X-Holes | ∠X | W |
|-----------|----|-----|-----|-----|-----|-----|-----|-----|-----|-----|-----|-----|----|----|----|----|----|----|-----|-------|---------|---------|---------|---------|-------|----------------|-----|----|
| EHS-519 | 3~ | 360 | 366 | 122 | 284 | 325 | 354 | 191 | 192 | 128 | 140 | 180 | 64 | 74 | 56 | 56 | 93 | 13 | 4.5 | M8x17 | | | M25x1.5 | M16x1.5 | M8x20 | 0° /120° /240° | 226 | 29 |
| EHS-539 | 3~ | 360 | 366 | 122 | 284 | 325 | 354 | 191 | 192 | 128 | 140 | 180 | 64 | 74 | 56 | 56 | 93 | 13 | 4.5 | M8x17 | | | M25x1.5 | M16x1.5 | M8x20 | 0° /120° /240° | 226 | 29 |
| EHS-549 | 3~ | 360 | 366 | 122 | 284 | 325 | 385 | 188 | 192 | 135 | 140 | 180 | 64 | 74 | 56 | 56 | 93 | 13 | 4.5 | M8x17 | M32x1.5 | M32x1.5 | | M32x1.5 | M8x20 | 0° /120° /240° | 226 | 42 |
| EHS-559 | 3~ | 360 | 366 | 122 | 284 | 325 | 372 | 191 | 192 | 128 | 140 | 180 | 64 | 74 | 56 | 56 | 93 | 13 | 4.5 | M8x17 | | | M25x1.5 | M16x1.5 | M8x20 | 0° /120° /240° | 226 | 29 |
| EHS-529-9 | 3~ | 360 | 366 | 122 | 284 | 325 | 372 | 191 | 192 | 128 | 140 | 180 | 64 | 74 | 56 | 56 | 93 | 13 | 4.5 | M8x17 | | | M25x1.5 | M16x1.5 | M8x20 | 0° /120° /240° | 226 | 29 |
| EHS-569 | 3~ | 360 | 366 | 122 | 284 | 325 | 403 | 188 | 192 | 135 | 140 | 180 | 64 | 74 | 56 | 56 | 93 | 13 | 4.5 | M8x17 | M32x1.5 | M32x1.5 | | M32x1.5 | M8x20 | 0° /120° /240° | 226 | 42 |

EHS-6/3AC (单、双级) 气环真空泵型号及性能参数表 (IP55 50/60HZ)

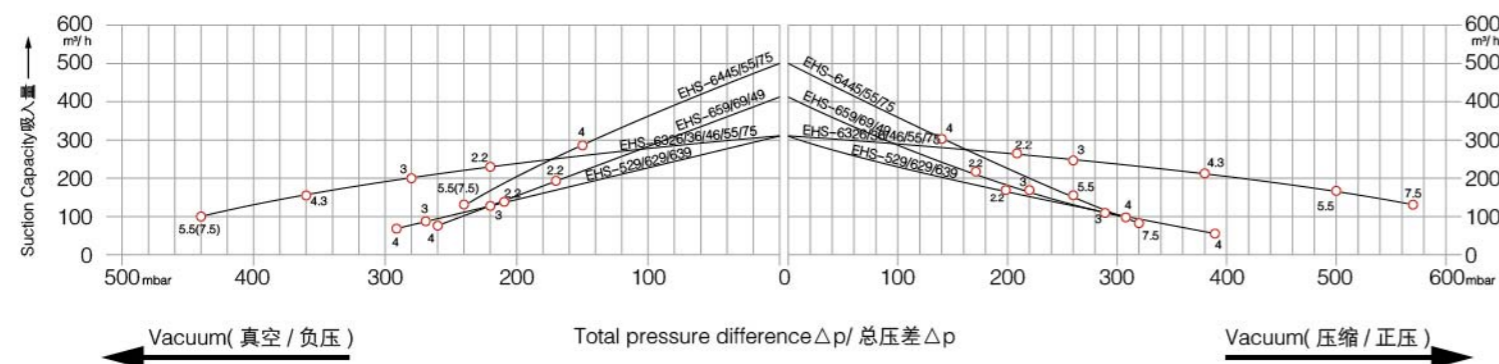
EHS-6/ 3AC (Single,double impeller) Gas ring vacuum pump models and the performance parameters table (IP55 50/60HZ)

| 型号 (EHS 3AC) Model | 单级 | 马达额定参数 | | | | 最大 | 额定 | 额定 | 噪音 noises db(A) | 重量 weight Kg | |
|--------------------------|--------|-----------|-------|----------|----------|-------------|--------------|----------------|-----------------------|--------------------|----|
| | 双级 | 频率 | 功率 | 电压 | 电流 | 排吸流量 | 真空压力 | 压缩压力 | | | |
| | single | frequency | power | voltage | current | Max airflow | rated Vacuum | rated compress | | | |
| | double | HZ | KW | V | A | m³/h | mbar | mbar | | | |
| EHS-529 | 单 | 50 | 2.2 | 200-240△ | 345-415Y | 9.7△/5.6Y | 318 | -210 | 200 | 69 | 31 |
| | | 60 | 2.55 | 220-275△ | 380-480Y | 10.3△/6.0Y | 376 | -210 | 200 | 72 | |
| EHS-629 | 单 | 50 | 3 | 200-240△ | 345-415Y | 12.5△/7.2Y | 318 | -270 | 290 | 69 | 36 |
| | | 60 | 3.45 | 220-275△ | 380-480Y | 12.5△/7.3Y | 376 | -250 | 230 | 72 | |
| EHS-639 | 单 | 50 | 4 | 345-415△ | 600-720Y | 9.0△/5.5Y | 318 | -290 | 390 | 69 | 40 |
| | | 60 | 4.6 | 380-480△ | 660-720Y | 9.0△/5.2Y | 376 | -330 | 330 | 72 | |
| EHS-6326 | 双 | 50 | 2.2 | 200-240△ | 345-415Y | 9.7△/5.6Y | 320 | -220 | 210 | 73 | 43 |
| | | 60 | 2.55 | 220-275△ | 380-480Y | 10.3△/6.0Y | 380 | -170 | 150 | 76 | |
| EHS-6336 | 双 | 50 | 3 | 200-240△ | 345-415Y | 12.5△/7.2Y | 320 | -280 | 260 | 73 | 48 |
| | | 60 | 3.45 | 220-275△ | 380-480Y | 12.6△/7.3Y | 380 | -230 | 200 | 76 | |
| EHS-6346 | 双 | 50 | 4.3 | 345-415△ | 600-720Y | 10.4△/5.2Y | 320 | -360 | 380 | 73 | 54 |
| | | 60 | 4.8 | 380-480△ | 660-720Y | 10.4△/6.0Y | 380 | -350 | 320 | 76 | |
| EHS-6355 | 双 | 50 | 5.5 | 345-415△ | 600-720Y | 13.3△/7.7Y | 320 | -440 | 500 | 73 | 66 |
| | | 60 | 6.3 | 380-480△ | 660-720Y | 13.3△/7.7Y | 380 | -440 | 500 | 76 | |
| EHS-6375 | 双 | 50 | 7.5 | 345-415△ | 600-720Y | 16.7△/9.6Y | 320 | -440 | 570 | 73 | 74 |
| | | 60 | 8.6 | 380-480△ | 660-720Y | 17.3△/10.0Y | 380 | -460 | 660 | 76 | |
| EHS-649 | 单 | 50 | 2.2 | 200-240△ | 345-415Y | 9.7△/5.6Y | 420 | -170 | 170 | 70 | 32 |
| | | 60 | 2.55 | 220-275△ | 380-480Y | 10.3△/6.0Y | 500 | -160 | 150 | 73 | |
| EHS-659 | 单 | 50 | 3 | 200-240△ | 345-415Y | 12.5△/7.2Y | 420 | -220 | 220 | 70 | 37 |
| | | 60 | 3.45 | 220-275△ | 380-480Y | 12.6△/7.3Y | 500 | -200 | 190 | 73 | |
| EHS-669 | 单 | 50 | 4 | 345-415△ | 600-720Y | 9.0△/5.2Y | 420 | -260 | 310 | 70 | 43 |
| | | 60 | 4.6 | 380-480△ | 660-720Y | 9.0△/5.2Y | 500 | -260 | 280 | 73 | |
| EHS-6445 | 双 | 50 | 4 | 345-415△ | 600-720Y | 9.0△/5.2Y | 500 | -150 | 140 | 74 | 54 |
| | | 60 | 4.6 | 380-480△ | 660-720Y | 9.0△/5.2Y | 600 | -100 | 90 | 78 | |
| EHS-6455 | 双 | 50 | 5.5 | 345-415△ | 600-720Y | 13.3△/7.7Y | 500 | -240 | 260 | 74 | 69 |
| | | 60 | 6.3 | 380-480△ | 660-720Y | 13.3△/7.7Y | 600 | -210 | 200 | 78 | |
| EHS-6475 | 双 | 50 | 7.5 | 345-415△ | 600-720Y | 16.7△/9.6Y | 500 | -240 | 320 | 74 | 75 |
| | | 60 | 8.6 | 380-480△ | 660-720Y | 17.3△/10.0Y | 600 | -270 | 300 | 78 | |

EHS-6 真空压缩选型曲线 3AC/ Vacuum compression type curve

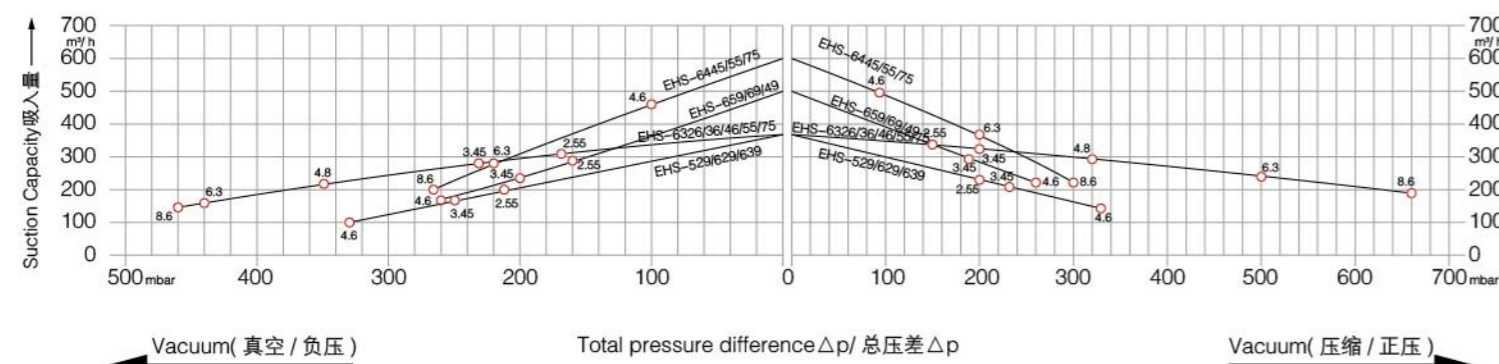
Vacuum Selection diagram 50 Hz--真空选型图表 50Hz

Compressor Selection Diagram 50 Hz--压缩选型图表 50Hz



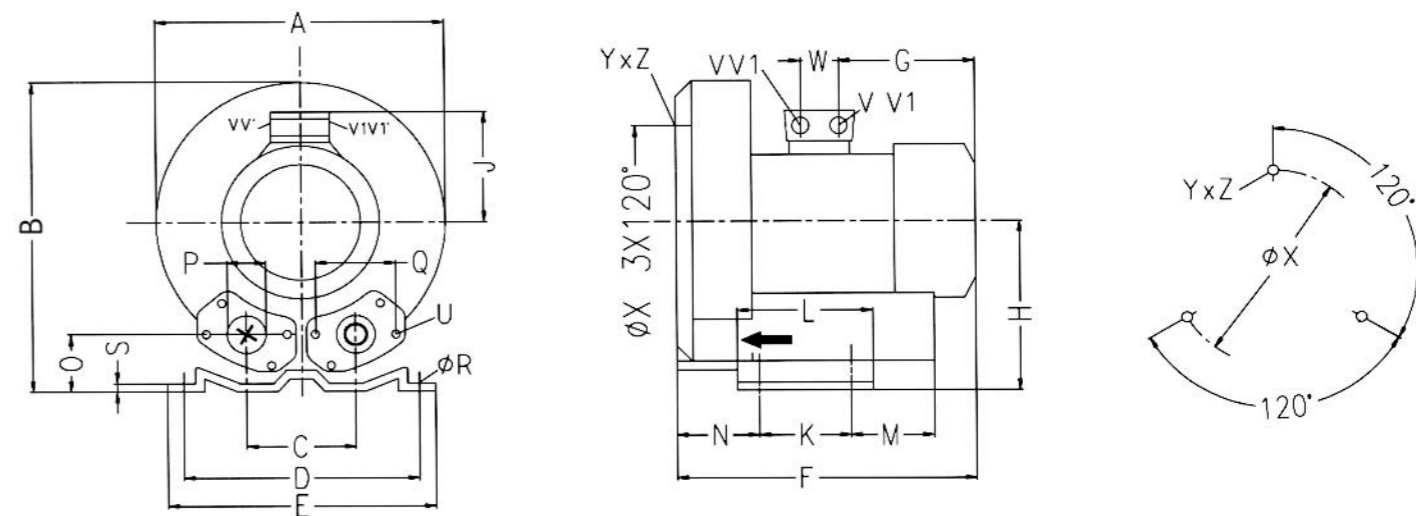
Vacuum Selection diagram 60 Hz--真空选型图表 60Hz

Compressor Selection Diagram 60 Hz--压缩选型图表 60Hz



EHS-6 单级安装尺寸 / Single stage mounting dimensions

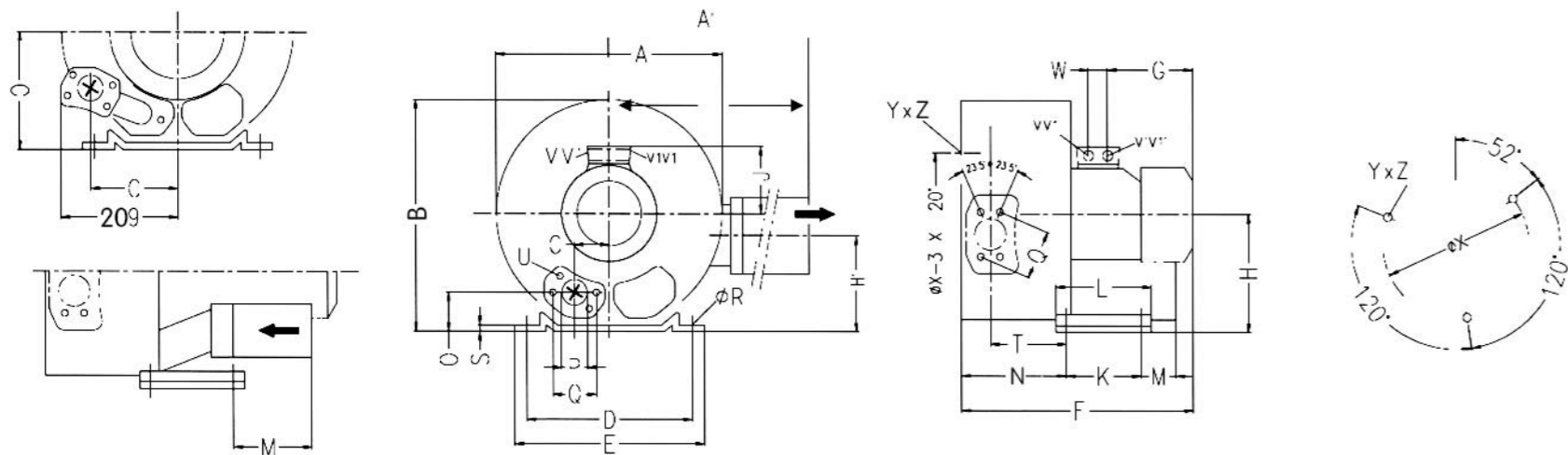
EHS-6



| 型号 Type | 相位 | A | B | C | D | E | F | G | H | J | K | L | M | N | O | fP | Q | fR | S | U | V(1~) | V'(1~) | V1(3~) | V1'(3~) | YxZ | X-Holes | f X | W |
|----------|----|-----|-----|-----|-----|-----|-----|-----|-----|-----|-----|-----|----|-----|----|----|----|----|-----|-------|---------|---------|---------|---------|--------|----------------|-----|----|
| EHS-529 | 3~ | 382 | 384 | 125 | 290 | 325 | 377 | 191 | 197 | 128 | 140 | 180 | 84 | 109 | 54 | 55 | 83 | 15 | 4.5 | M8x17 | | | M32x1.5 | | M10x20 | 0° /120° /240° | 240 | 29 |
| EHS-629 | 3~ | 382 | 384 | 125 | 290 | 325 | 409 | 188 | 197 | 135 | 140 | 180 | 84 | 109 | 54 | 55 | 83 | 15 | 4.5 | M8x17 | M32x1.5 | M32x1.5 | M25x1.5 | M32x1.5 | M10x20 | 0° /120° /240° | 240 | 42 |
| EHS-639 | 3~ | 382 | 384 | 125 | 290 | 325 | 432 | 209 | 197 | 148 | 140 | 180 | 84 | 109 | 54 | 55 | 83 | 15 | 4.5 | M8x17 | M32x1.5 | M32x1.5 | M25x1.5 | M32x1.5 | M10x20 | 0° /120° /240° | 240 | 42 |
| EHS-649 | 3~ | 382 | 384 | 125 | 290 | 325 | 387 | 191 | 197 | 128 | 140 | 180 | 84 | 109 | 54 | 55 | 83 | 15 | 4.5 | M8x17 | M32x1.5 | M32x1.5 | M25x1.5 | | M10x20 | 0° /120° /240° | 240 | 29 |
| EHS-659 | 3~ | 382 | 384 | 125 | 290 | 325 | 419 | 189 | 197 | 135 | 140 | 180 | 84 | 109 | 54 | 55 | 83 | 15 | 4.5 | M8x17 | M32x1.5 | M32x1.5 | M25x1.5 | | M10x20 | 0° /120° /240° | 240 | 42 |
| EHS-669 | 3~ | 382 | 384 | 125 | 290 | 325 | 440 | 209 | 197 | 148 | 140 | 180 | 84 | 109 | 54 | 55 | 83 | 15 | 4.5 | M8x17 | M32x1.5 | M32x1.5 | M25x1.5 | M32x1.5 | M10x20 | 0° /120° /240° | 240 | 42 |
| EHS-629A | 1~ | 382 | 384 | 125 | 290 | 325 | 377 | 191 | 197 | 128 | 140 | 180 | 84 | 109 | 54 | 55 | 83 | 15 | 4.5 | M8x17 | | | M25x1.5 | M16x1.5 | M10x20 | 0° /120° /240° | 240 | 29 |

EHS-6 双级安装尺寸 / Two stage mounting dimensions

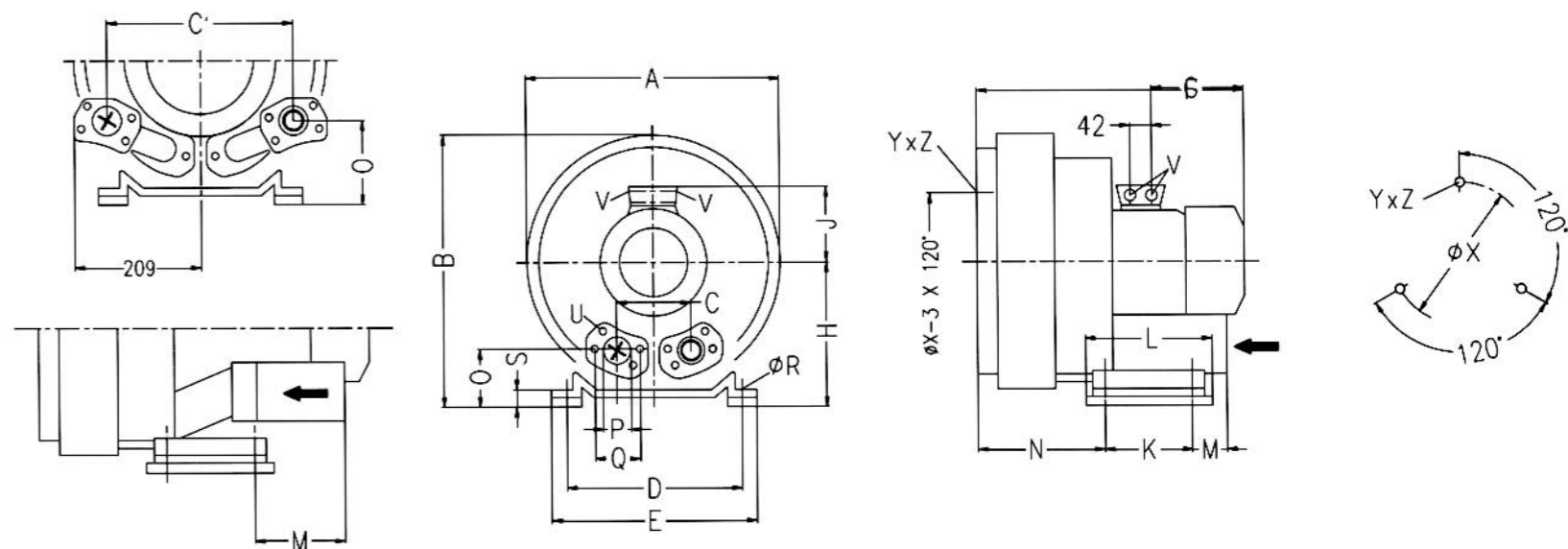
EHS-6



| 型号 Type | 相位 | A | A' | B | C | D | E | F | G | H | H' | J | K | L | M | N | O | fP | Q | fR | S | T | U | V | V' | V1 | V1' | fX | YxZ | X-Holes | W |
|----------|----|-----|-----|-----|-----|-----|-----|-----|-----|-----|-----|-----|-----|-----|-----|-----|----|----|----|----|-----|-----|-------|---------|---------|---------|---------|-----|--------|---------------------|----|
| EHS-6326 | 3~ | 426 | 426 | 410 | 63 | 290 | 325 | 473 | 191 | 197 | 162 | 128 | 140 | 180 | 84 | 205 | 53 | 55 | 83 | 15 | 4.5 | 130 | M8x17 | M25x1.5 | M16x1.5 | M32x1.5 | M32x1.5 | 240 | M10x20 | 51.5°/171.5°/291.5° | 29 |
| EHS-6336 | 3~ | 426 | 426 | 410 | 63 | 290 | 325 | 496 | 188 | 197 | 162 | 135 | 140 | 180 | 84 | 205 | 53 | 55 | 83 | 15 | 4.5 | 130 | M8x17 | M25x1.5 | M32x1.5 | M32x1.5 | M32x1.5 | 240 | M10x20 | 51.5°/171.5°/291.5° | 42 |
| EHS-6346 | 3~ | 426 | 426 | 410 | 63 | 290 | 325 | 526 | 209 | 197 | 162 | 148 | 140 | 180 | 84 | 205 | 53 | 55 | 83 | 15 | 4.5 | 130 | M8x17 | M25x1.5 | M32x1.5 | M32x1.5 | M32x1.5 | 240 | M10x20 | 51.5°/171.5°/291.5° | 42 |
| EHS-6355 | 3~ | 426 | 426 | 410 | 154 | 290 | 325 | 571 | 226 | 197 | 162 | 167 | 140 | 180 | 200 | 205 | 53 | 55 | 83 | 15 | 4.5 | 130 | M8x17 | M25x1.5 | M32x1.5 | M32x1.5 | M32x1.5 | 240 | M10x20 | 51.5°/171.5°/291.5° | 42 |
| EHS-6375 | 3~ | 426 | 426 | 410 | 154 | 290 | 325 | 571 | 226 | 197 | 162 | 167 | 140 | 180 | 200 | 205 | 53 | 55 | 83 | 15 | 4.5 | 130 | M8x17 | M25x1.5 | M32x1.5 | M32x1.5 | M32x1.5 | 240 | M10x20 | 51.5°/171.5°/291.5° | 42 |

EHS-6 双级安装尺寸 / Two stage mounting dimensions

EHS-6



| 型号 Type | 相位 | A | B | C | C' | D | E | F | G | H | J | K | L | M | N | O | fP | Q | fR | S | U | V | fX | YxZ | X-Holes |
|----------|----|-----|-----|-----|-----|-----|-----|-----|-----|-----|-----|-----|-----|-----|-----|-----|----|----|----|------|-------|-----------|-----|--------|----------------|
| EHS-6445 | 3~ | 420 | 469 | 125 | / | 290 | 325 | 526 | 209 | 197 | 148 | 140 | 180 | 84 | 205 | 153 | 55 | 83 | 15 | 64.5 | M8x17 | 4xM32x1.5 | 240 | M10x20 | 0° /120° /240° |
| EHS-6455 | 3~ | 420 | 469 | / | 308 | 290 | 325 | 571 | 226 | 257 | 167 | 140 | 180 | 200 | 205 | 153 | 55 | 83 | 15 | 64.5 | M8x17 | 4xM32x1.5 | 240 | M10x20 | 0° /120° /240° |
| EHS-6475 | 3~ | 420 | 469 | / | 308 | 290 | 325 | 571 | 226 | 257 | 167 | 140 | 180 | 200 | 205 | 153 | 55 | 83 | 15 | 64.5 | M8x17 | 4xM32x1.5 | 240 | M10x20 | 0° /120° /240° |

EHS-6/3AC (单、三级) 气环真空泵型号及性能参数表(IP55 50/60HZ)

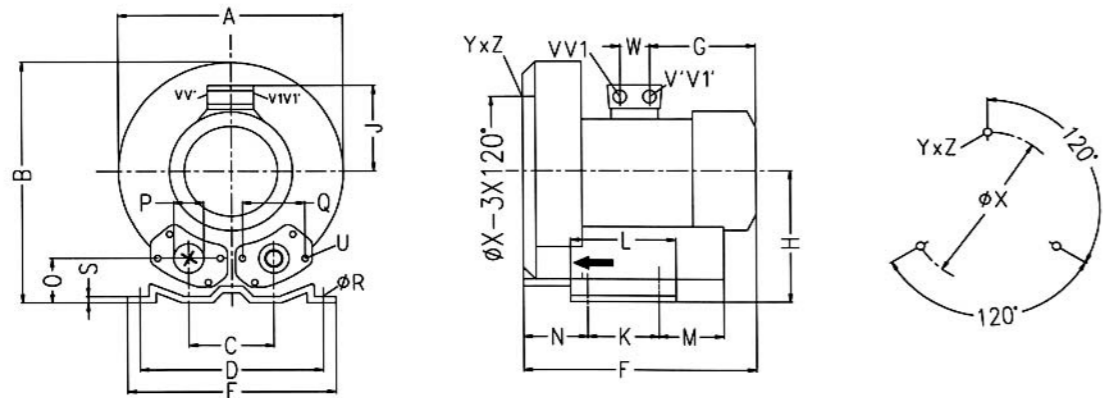
新增产品

EHS-6/3AC (Single,three impeller) Gas ring vacuum pump models and the performance parameters table (IP55 50/60HZ)

New products

| 型号 (EHS /3AC) double | 单级 | 马达额定参数 | | | | 最大 排吸流量 Max airflow m³/h | 额定 真空压力 rated Vacuum mbar | 额定 压缩压力 rated compress mbar | 噪音 noises db(A) | 重量 weight Kg |
|-------------------------|------------------|-----------------|-------------|-------------------|--------------|-----------------------------------|------------------------------------|--------------------------------------|-----------------------|--------------------|
| | 双级 | 频率 | 功率 | 电压 | 电流 | | | | | |
| | single double | frequency HZ | power KW | voltage V | current A | | | | | |
| EHS-679 | 单 | 50 | 3 | 200-240Δ 345-415Y | 12.5Δ/7.2Y | 540 | -180 | 170 | 81 | 47 |
| | | 60 | 3.45 | 220-275Δ 380-480Y | 12.6Δ/7.3Y | 635 | -120 | 130 | 83 | |
| EHS-689 | 单 | 50 | 4.3 | 345-415Δ 600-720Y | 11Δ/6.5Y | 540 | -210 | 200 | 83 | 50 |
| | | 60 | 4.8 | 380-480Δ 660-720Y | 12.5Δ/7.2Y | 635 | -150 | 140 | 85 | |

EHS-6



| 型号 Type | 相位 | A | B | C | D | E | F | G | H | J | K | L | M | N | O | fP | Q | fR | S | U | V | fX | YxZ | X-Holes |
|---------|----|-----|-----|-----|-----|-----|-----|-----|-----|-----|-----|-----|-----|-----|----|-------------------|----|----|---|-------|---------|-----|--------|----------------|
| EHS-679 | 3~ | 426 | 447 | 145 | 305 | 332 | 437 | 230 | 243 | 148 | 155 | 235 | 128 | 129 | 45 | G2 _{1/2} | 79 | 12 | 6 | M8x17 | M32x1.5 | 262 | M12x20 | 0° /120° /240° |
| EHS-689 | 3~ | 426 | 447 | 145 | 305 | 332 | 467 | 230 | 243 | 148 | 155 | 235 | 128 | 129 | 45 | G2 _{1/2} | 79 | 12 | 6 | M8x17 | M32x1.5 | 262 | M12x20 | 0° /120° /240° |

EHS-7/8/3AC (单、双级) 气环真空泵型号及性能参数表(IP55 50/60HZ)

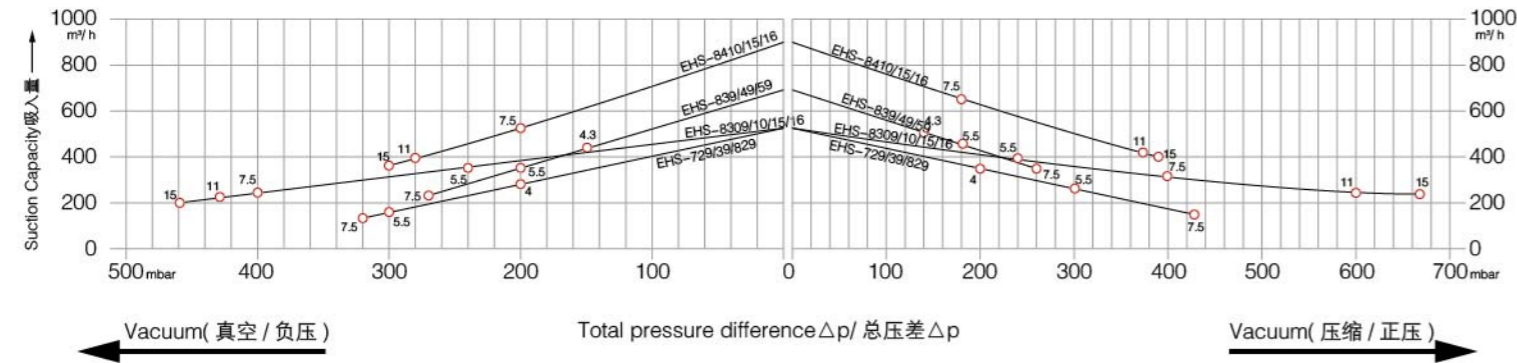
EHS-7/8/ 3AC (Single,double impeller) Gas ring vacuum pump models and the performance parameters table (IP55 50/60HZ)

| 型号 (EHS 3AC) double | 单级 | 马达额定参数 | | | | 最大 排吸流量 Max airflow m³/h | 额定 真空压力 rated Vacuum mbar | 额定 压缩压力 rated compress mbar | 噪音 noises db(A) | 重量 weight Kg |
|---------------------------|------------------|-----------------|-------------|-------------------|--------------|-----------------------------------|------------------------------------|--------------------------------------|-----------------------|--------------------|
| | 双级 | 频率 | 功率 | 电压 | 电流 | | | | | |
| | single double | frequency HZ | power KW | voltage V | current A | | | | | |
| EHS-719 | 单 | 50 | 4.0 | 345-415Δ 600-720Y | 9.5Δ/5.5Y | 530 | -200 | 200 | 70 | 54 |
| | | 60 | 4.6 | 380-480Δ 660-720Y | 9.5Δ/5.5Y | 620 | -160 | 160 | 74 | |
| EHS-729 | 单 | 50 | 5.5 | 345-415Δ 600-720Y | 12.9Δ/7.4Y | 530 | -300 | 300 | 70 | 63 |
| | | 60 | 6.3 | 380-480Δ 660-720Y | 12.9Δ/7.45Y | 620 | -320 | 280 | 74 | |
| EHS-829 | 单 | 50 | 7.5 | 345-415Δ 600-720Y | 16.7Δ/9.6Y | 530 | -320 | 430 | 70 | 66 |
| | | 60 | 8.6 | 380-480Δ 660-720Y | 17.3Δ/10.0Y | 620 | -350 | 400 | 74 | |
| EHS-8309 | 双 | 50 | 5.5 | 345-415Δ 600-720Y | 13.3Δ/7.7Y | 520 | -240 | 240 | 74 | 83 |
| | | 60 | 6.3 | 380-480Δ 660-720Y | 13.3Δ/7.7Y | 620 | -170 | 160 | 78 | |
| EHS-8310 | 双 | 50 | 7.5 | 345-415Δ 600-720Y | 16.7Δ/9.6Y | 520 | -400 | 400 | 74 | 86 |
| | | 60 | 8.6 | 380-480Δ 660-720Y | 17.3Δ/10.0Y | 620 | -360 | 330 | 78 | |
| EHS-8315 | 双 | 50 | 11.0 | 345-415Δ 600-720Y | 28.0Δ/16.2Y | 520 | -430 | 600 | 74 | 104 |
| | | 60 | 12.6 | 380-480Δ 660-720Y | 29.0Δ/16.7Y | 620 | -460 | 600 | 78 | |
| EHS-8316 | 双 | 50 | 15 | 345-415Δ 600-720Y | 32.5Δ/18.8Y | 520 | -460 | 670 | 74 | 120 |
| | | 60 | 17.3 | 380-480Δ 660-720Y | 34.5Δ/19.9Y | 620 | -490 | 750 | 78 | |
| EHS-839 | 单 | 50 | 4.0 | 345-415Δ 600-720Y | 9.5Δ/5.5Y | 700 | -150 | 140 | 70 | 57 |
| | | 60 | 4.6 | 380-480Δ 660-720Y | 9.5Δ/5.5Y | 840 | -90 | 90 | 74 | |
| EHS-849 | 单 | 50 | 5.5 | 345-415Δ 600-720Y | 12.9Δ/7.4Y | 700 | -200 | 180 | 70 | 66 |
| | | 60 | 6.3 | 380-480Δ 660-720Y | 12.9Δ/7.45Y | 840 | -180 | 180 | 74 | |
| EHS-859 | 单 | 50 | 7.5 | 345-415Δ 600-720Y | 16.7Δ/9.6Y | 700 | -270 | 260 | 70 | 69 |
| | | 60 | 8.6 | 380-480Δ 660-720Y | 17.3Δ/10.0Y | 840 | -270 | 260 | 74 | |
| EHS-8410 | 双 | 50 | 7.5 | 345-415Δ 600-720Y | 16.7Δ/9.6Y | 900 | -200 | 180 | 74 | 91 |
| | | 60 | 8.6 | 380-480Δ 660-720Y | 17.3Δ/10.0Y | 1050 | -150 | 120 | 78 | |
| EHS-8415 | 双 | 50 | 11.0 | 345-415Δ 600-720Y | 28.0Δ/16.2Y | 900 | -280 | 370 | 74 | 110 |
| | | 60 | 12.6 | 380-480Δ 660-720Y | 29.0Δ/16.7Y | 1050 | -310 | 350 | 78 | |
| EHS-8416 | 双 | 50 | 15 | 345-415Δ 600-720Y | 32.5Δ/18.8Y | 900 | -300 | 390 | 74 | 126 |
| | | 60 | 17.5 | 380-480Δ 660-720Y | 34.5Δ/19.9Y | 1050 | -330 | 370 | 78 | |

EHS-7/8 真空压缩选型曲线 3AC/ Vacuum compression type curve

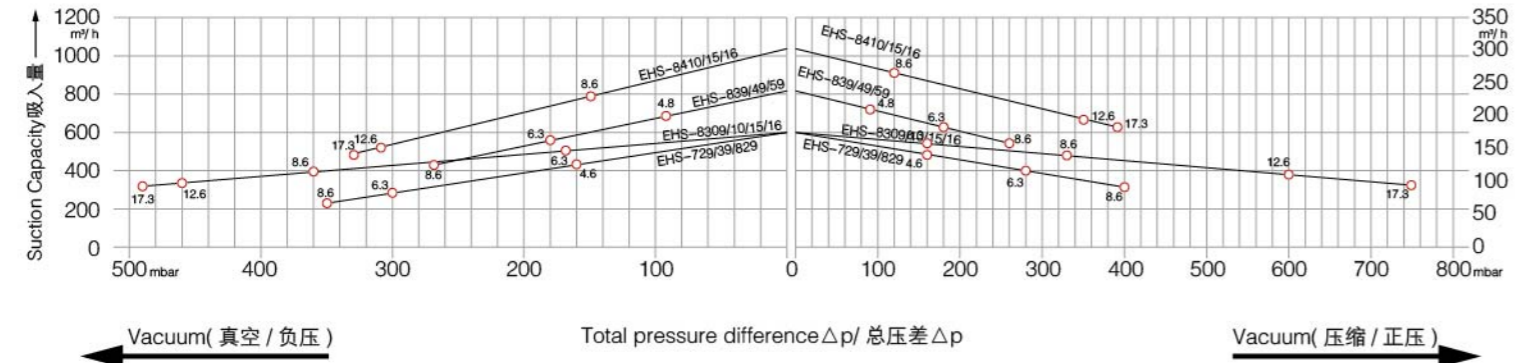
Vacuum Selection diagram 50 Hz--真空选型图表 50Hz

Compressor Selection Diagram 50 Hz--压缩选型图表 50Hz



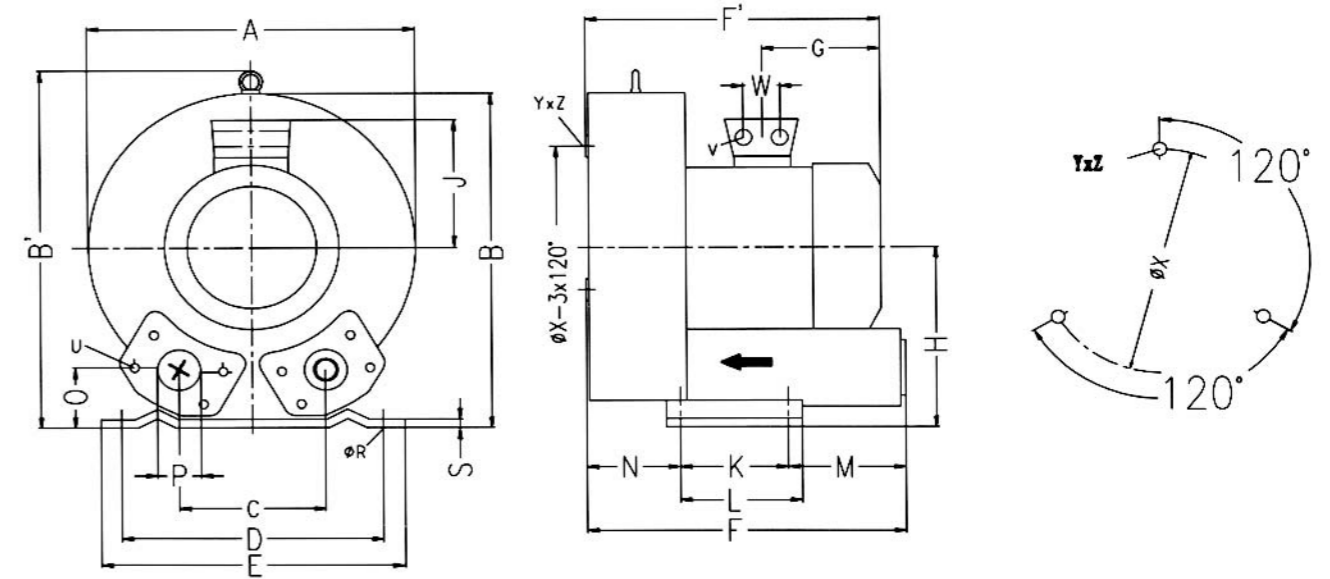
Vacuum Selection diagram 60 Hz--真空选型图表 60Hz

Compressor Selection Diagram 60 Hz--压缩选型图表 60Hz



EHS-8 单级 安装尺寸 / Single stage mounting dimensions

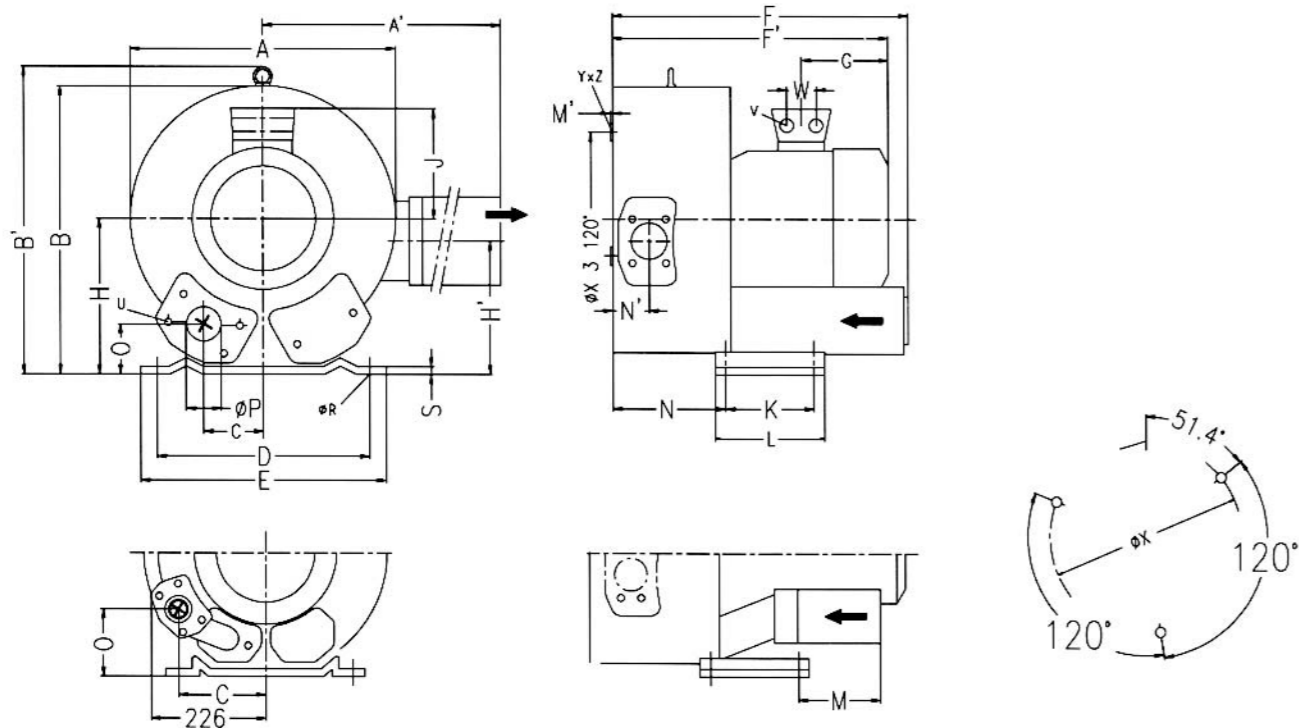
EHS-8



| 型号 Type | 相位 | A | A' | B | B' | C | D | E | F | F' | G | H | H' | J | K | L | M | N | N' | O | φP | φR | S | V | W | φX | YxZ | X-Holes |
|---------|----|-----|----|-----|-----|-----|-----|-----|-----|-----|-----|-----|----|-----|-----|-----|-----|-----|----|----|-------------------|----|---|-----------|----|-----|--------|----------------|
| EHS-719 | 3~ | 451 | | 461 | 509 | 152 | 356 | 394 | 433 | 450 | 230 | 240 | | 148 | 170 | 217 | 140 | 124 | | 65 | G2 _{1/2} | 15 | 6 | 4xM32x1.5 | 42 | 286 | M12x20 | 0° /120° /240° |
| EHS-729 | 3~ | 451 | | 461 | 509 | 152 | 356 | 394 | 433 | 477 | 226 | 240 | | 167 | 170 | 217 | 140 | 124 | | 65 | G2 _{1/2} | 15 | 6 | 4xM32x1.5 | 42 | 286 | M12x20 | 0° /120° /240° |
| EHS-829 | 3~ | 451 | | 461 | 509 | 152 | 356 | 394 | 433 | 447 | 226 | 240 | | 167 | 170 | 217 | 140 | 124 | | 65 | G2 _{1/2} | 15 | 6 | 4xM32x1.5 | 42 | 286 | M12x20 | 0° /120° /240° |
| EHS-839 | 3~ | 451 | | 509 | 509 | 152 | 356 | 394 | 449 | 466 | 230 | 240 | | 148 | 170 | 217 | 139 | 164 | | 65 | G2 _{1/2} | 15 | 6 | 4xM32x1.5 | 42 | 286 | M12x20 | 0° /120° /240° |
| EHS-849 | 3~ | 451 | | 509 | 509 | 152 | 356 | 394 | 449 | 492 | 247 | 240 | | 167 | 170 | 217 | 139 | 164 | | 65 | G2 _{1/2} | 15 | 6 | 4xM32x1.5 | 42 | 286 | M12x20 | 0° /120° /240° |
| EHS-859 | 3~ | 451 | | 461 | 509 | 152 | 356 | 394 | 449 | 492 | 247 | 240 | | 167 | 170 | 217 | 139 | 164 | | 65 | G2 _{1/2} | 15 | 6 | 4xM32x1.5 | 42 | 286 | M12x20 | 0° /120° /240° |

EHS-8 双级安装尺寸 / Two stage mounting dimensions

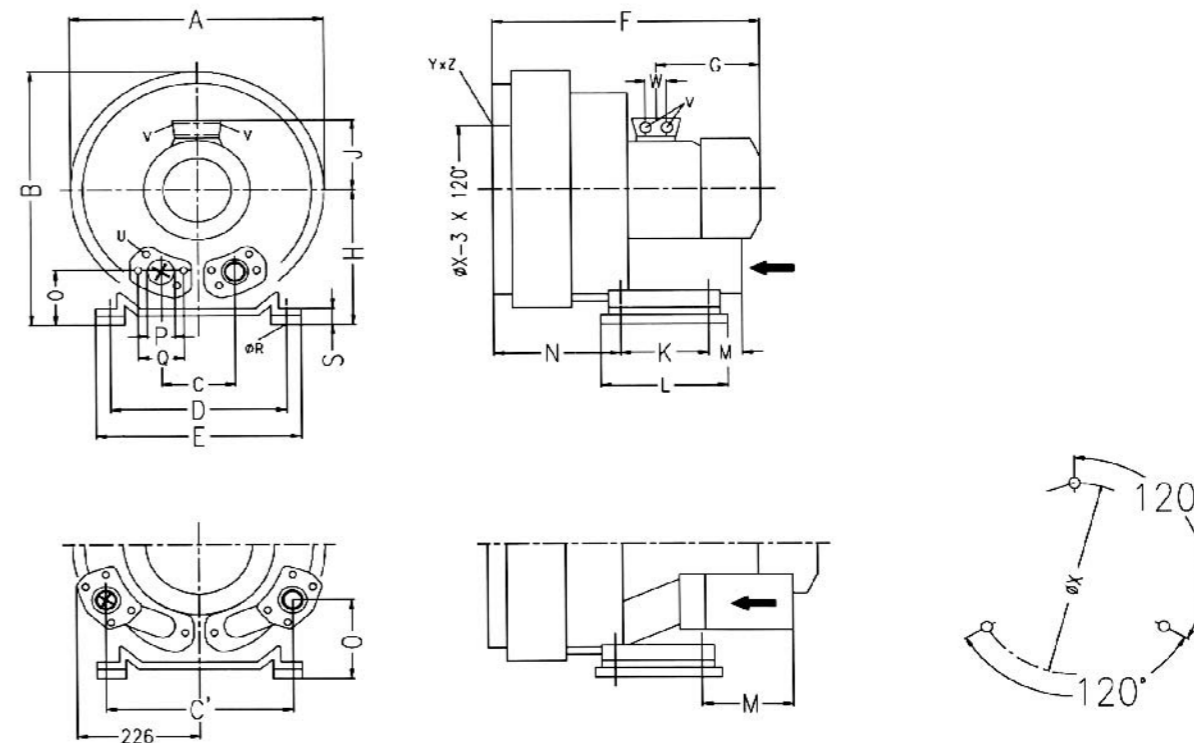
EHS-8



| 型号 Type | 相位 | A | A' | B | B' | C | D | E | F | F' | G | H | H' | J | K | L | M | N | N' | O | fP | fR | S | V | W | fX | YxZ | X-Holes |
|----------|----|-----|-----|-----|-----|----|-----|-----|-----|-----|-----|-----|-----|-----|-----|-----|-----|----|-----|--------------------|----|----|-----------|----|-----|--------|-----------------|---------|
| EHS-8309 | 3~ | 500 | 549 | 509 | 509 | 76 | 356 | 394 | 545 | 589 | 226 | 240 | 199 | 167 | 170 | 217 | 236 | 84 | 65 | G _{2 1/2} | 15 | 6 | 4xM32x1.5 | 42 | 286 | M12x20 | 51.4°/120°/240° | |
| EHS-8310 | 3~ | 500 | 549 | 509 | 509 | 76 | 356 | 394 | 545 | 589 | 226 | 240 | 199 | 167 | 170 | 217 | 236 | 84 | 65 | G _{2 1/2} | 15 | 6 | 4xM32x1.5 | 42 | 286 | M12x20 | 51.4°/120°/240° | |
| EHS-8315 | 3~ | 500 | 549 | 509 | 509 | 76 | 356 | 394 | 694 | 717 | 318 | 240 | 199 | 197 | 170 | 217 | 212 | 84 | 105 | G _{2 1/2} | 15 | 6 | 4xM40x1.5 | 54 | 286 | M12x20 | 51.4°/120°/240° | |
| EHS-8316 | 3~ | 500 | 549 | 509 | 509 | 76 | 356 | 394 | 694 | 717 | 318 | 240 | 199 | 197 | 170 | 217 | 212 | 84 | 105 | G _{2 1/2} | 15 | 6 | 4xM40x1.5 | 54 | 286 | M12x20 | 51.4°/120°/240° | |

EHS-8 双级安装尺寸 / Two stage mounting dimensions

EHS-8



| 型号 Type | 相位 | A | B | C | C' | D | E | F | G | H | J | K | L | M | N | O | fP | fR | S | V | W | fX | YxZ | X-Holes |
|----------|----|-----|-----|-----|-----|-----|-----|-----|-----|-----|-----|-----|-----|-----|--------------------|--------------------|----|-----------|-----------|-----|--------|--------------|--------------|---------|
| EHS-8410 | 3~ | 500 | 550 | 152 | 356 | 394 | 589 | 247 | 300 | 167 | 170 | 217 | 236 | 125 | G _{2 1/2} | 15 | 66 | 4xM32x1.5 | 42 | 286 | M12x20 | 0°/120°/240° | | |
| EHS-8415 | 3~ | 500 | 550 | 336 | 356 | 394 | 694 | 318 | 300 | 197 | 170 | 217 | 312 | 212 | 165 | G _{2 1/2} | 15 | 66 | 4xM40x1.5 | 54 | 286 | M12x20 | 0°/120°/240° | |
| EHS-8416 | 3~ | 500 | 550 | 336 | 356 | 394 | 694 | 318 | 300 | 197 | 170 | 217 | 312 | 212 | 165 | G _{2 1/2} | 15 | 66 | 4xM40x1.5 | 54 | 286 | M12x20 | 0°/120°/240° | |

EHS-9/3AC (单、双级) 气环真空泵型号及性能参数表(IP55 50/60HZ)

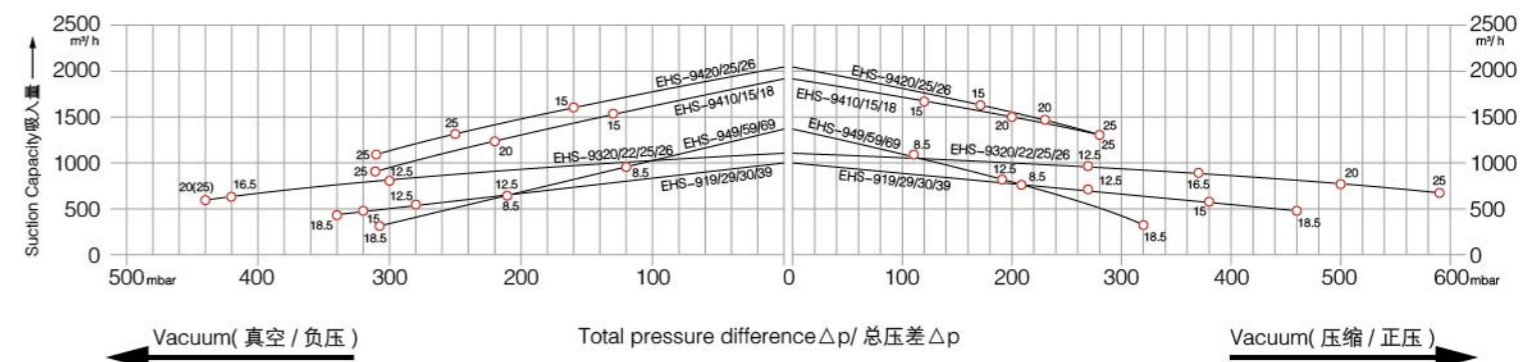
EHS-9/ 3AC (Single,double impeller) Gas ring vacuum pump models and the performance parameters table (IP55 50/60HZ)

| 型号 (EHS 3AC) Model | 单级 | 马达额定参数 | | | | 最大 排吸流量 Max airflow m ³ /h | 额定 真空压力 rated Vacuum mbar | 额定 压缩压力 rated compress mbar | 噪音 noises db(A) | 重量 weight Kg | |
|--------------------------|--------|-----------------|-------------|--------------|--------------|--|------------------------------------|--------------------------------------|-----------------------|--------------------|-----|
| | 双级 | 频率 | 功率 | 电压 | 电流 | | | | | | |
| | single | frequency HZ | power KW | voltage V | current A | | | | | | |
| EHS-919 | 单 | 50 | 8.5 | 345-415Δ | 600-720Y | 18.2Δ/10.5Y | 1050 | -210 | 210 | 74 | 93 |
| | | 60 | 9.8 | 380-480Δ | 660-720Y | 18.2Δ/10.5Y | 1250 | -180 | 180 | 79 | |
| EHS-929 | 单 | 50 | 12.5 | 345-415Δ | 600-720Y | 28.0Δ/16.2Y | 1050 | -280 | 270 | 74 | 116 |
| | | 60 | 14.5 | 380-480Δ | 660-720Y | 29.0Δ/16.7Y | 1250 | -270 | 260 | 79 | |
| EHS-930 | 单 | 50 | 15 | 345-415Δ | 600-720Y | 35.0Δ/20.0Y | 1050 | -320 | 380 | 74 | 120 |
| | | 60 | 17.5 | 380-480Δ | 660-720Y | 36.5Δ/21.0Y | 1250 | -340 | 360 | 79 | |
| EHS-939 | 单 | 50 | 18.5 | 345-415Δ | 600-720Y | 37.0Δ/21.0Y | 1050 | -340 | 460 | 74 | 128 |
| | | 60 | 21.3 | 380-480Δ | 660-720Y | 39.0Δ/22.5Y | 1250 | -380 | 420 | 79 | |
| EHS-9320 | 双 | 50 | 12.5 | 345-415Δ | 600-720Y | 28.0Δ/16.2Y | 1110 | -300 | 270 | 74 | 187 |
| | | 60 | 14.5 | 380-480Δ | 660-720Y | 29.0Δ/16.7Y | 1310 | -220 | 200 | 78 | |
| EHS-9322 | 双 | 50 | 16.5 | 345-415Δ | 600-720Y | 35.0Δ/20.0Y | 1110 | -420 | 370 | 74 | 197 |
| | | 60 | 19 | 380-480Δ | 660-720Y | 36.5Δ/21.0Y | 1310 | -340 | 300 | 84 | |
| EHS-9325 | 双 | 50 | 20 | 345-415Δ | 600-720Y | 40.0Δ/23.0Y | 1110 | -440 | 500 | 74 | 204 |
| | | 60 | 23 | 380-480Δ | 660-720Y | 42.0Δ/24.2Y | 1310 | -440 | 430 | 84 | |
| EHS-9326 | 双 | 50 | 25 | 345-415Δ | 600-720Y | 52.0Δ/30.0Y | 1110 | -440 | 590 | 74 | 211 |
| | | 60 | 29 | 380-480Δ | 660-720Y | 52.0Δ/30.0Y | 1310 | -440 | 540 | 84 | |
| EHS-949 | 单 | 50 | 8.5 | 345-415Δ | 600-720Y | 18.2Δ/10.5Y | 1370 | -120 | 110 | 75 | 98 |
| | | 60 | 9.8 | 380-480Δ | 660-720Y | 18.2Δ/10.5Y | 1650 | -80 | 70 | 80 | |
| EHS-959 | 单 | 50 | 12.5 | 345-415Δ | 600-720Y | 28.0Δ/16.2Y | 1370 | -210 | 190 | 75 | 121 |
| | | 60 | 14.5 | 380-480Δ | 660-720Y | 29.0Δ/22.5Y | 1650 | -170 | 160 | 80 | |
| EHS-969 | 单 | 50 | 18.5 | 345-415Δ | 600-720Y | 37.0Δ/21.0Y | 1370 | -310 | 320 | 75 | 131 |
| | | 60 | 21.3 | 380-480Δ | 660-720Y | 39.0Δ/22.5Y | 1650 | -300 | 280 | 80 | |
| EHS-9410 | 双 | 50 | 15 | 345-415Δ | 600-720Y | 35.0Δ/20.0Y | 1940 | -130 | 120 | 75 | 187 |
| | | 60 | 17.5 | 380-480Δ | 660-720Y | 36.5Δ/21.0Y | 2310 | -60 | 40 | 84 | |
| EHS-9415 | 双 | 50 | 20 | 345-415Δ | 600-720Y | 40.0Δ/23.0Y | 1940 | -220 | 200 | 75 | 212 |
| | | 60 | 23 | 380-480Δ | 660-720Y | 42.0Δ/24.2Y | 2310 | -160 | 130 | 84 | |
| EHS-9418 | 双 | 50 | 25 | 345-415Δ | 600-720Y | 52.0Δ/30.0Y | 1940 | -310 | 280 | 75 | 219 |
| | | 60 | 29 | 380-480Δ | 660-720Y | 52.0Δ/30.0Y | 2310 | -270 | 220 | 84 | |
| EHS-9420 | 双 | 50 | 15 | 345-415Δ | 600-720Y | 35.0Δ/20.0Y | 2050 | -160 | 170 | 75 | 220 |
| | | 60 | 17.5 | 380-480Δ | 660-720Y | 36.5Δ/21.0Y | 2480 | -110 | 120 | 84 | |
| EHS-9425 | 双 | 50 | 20 | 345-415Δ | 600-720Y | 40.0Δ/23.0Y | 2050 | -250 | 230 | 75 | 230 |
| | | 60 | 23 | 380-480Δ | 660-720Y | 42.0Δ/24.2Y | 2480 | -190 | 180 | 84 | |
| EHS-9426 | 双 | 50 | 25 | 345-415Δ | 600-720Y | 52.0Δ/30.0Y | 2050 | -310 | 280 | 75 | 235 |
| | | 60 | 29 | 380-480Δ | 660-720Y | 52.0Δ/30.0Y | 2480 | -280 | 230 | 84 | |

EHS-9 真空压缩选型曲线 3AC/ Vacuum compression type curve

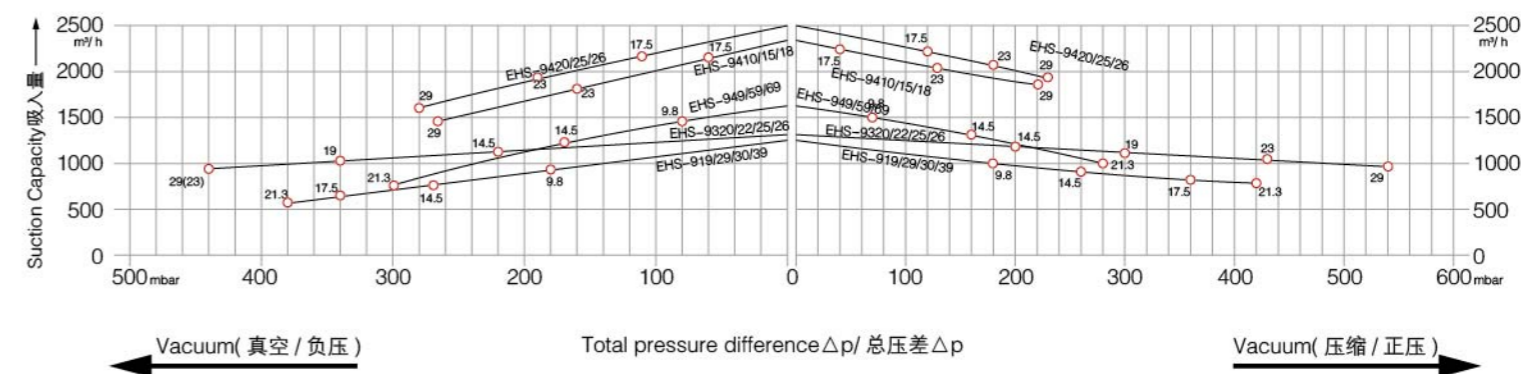
Vacuum Selection diagram 50 Hz--真空选型图表 50Hz

Compressor Selection Diagram 50 Hz--压缩选型图表 50Hz



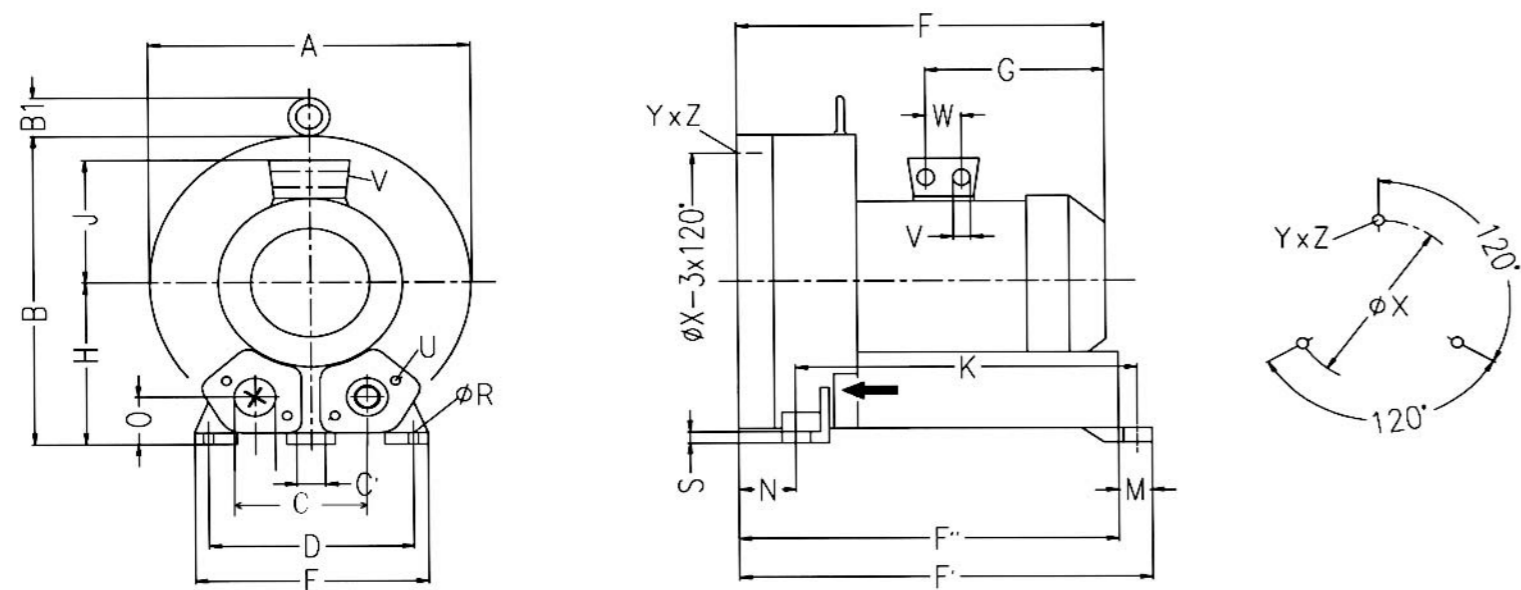
Vacuum Selection diagram 60 Hz--真空选型图表 60Hz

Compressor Selection Diagram 60 Hz--压缩选型图表 60Hz



EHS-9 单级 安装尺寸 / Single stage mounting dimensions

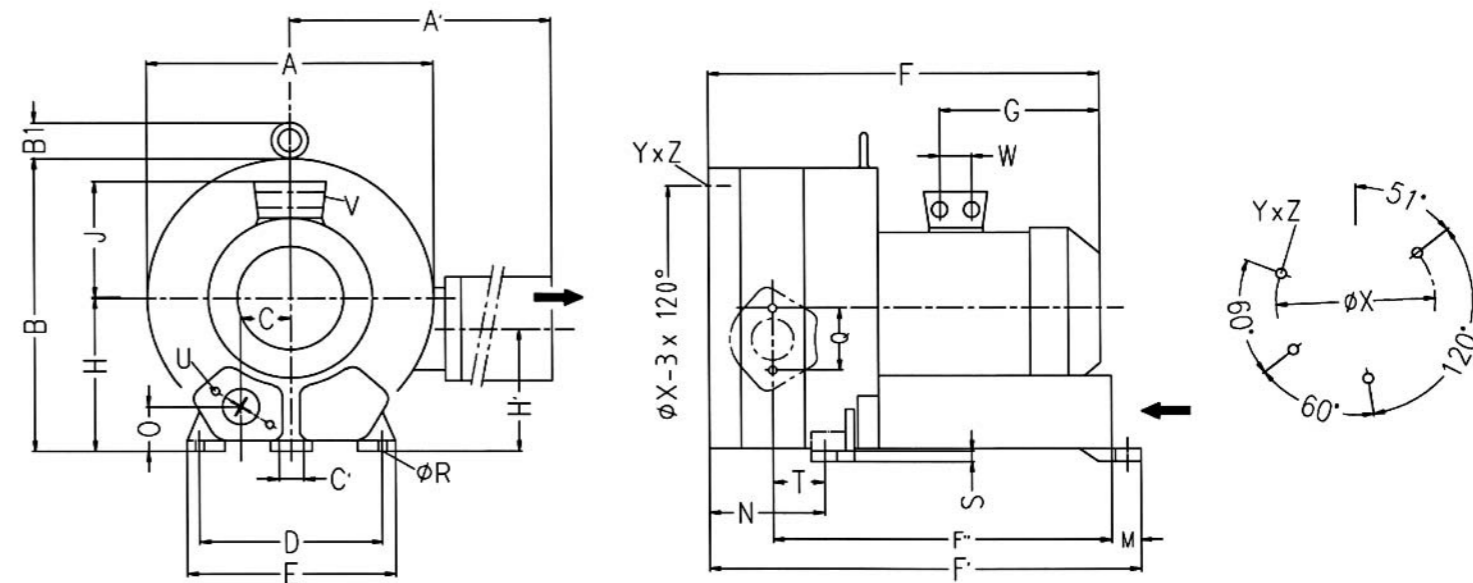
EHS-9



| 型号 Type | 相位 | A | B | B1 | C | C' | D | E | F | F' | F'' | G | H | J | K | M | N | O | ∮P | ∮Q | ∮R | S | U | V | W | ∮X | YxZ | X-Holes |
|---------|----|-----|-----|----|-----|----|-----|-----|-----|-----|-----|-----|-----|-----|-----|----|-----|----|-----|-----|----|----|--------|-----------|----|-----|--------|----------------|
| EHS-919 | 3~ | 550 | 569 | 55 | 207 | 15 | 360 | 415 | 525 | 644 | 605 | 268 | 300 | 167 | 533 | 39 | 89 | 92 | 100 | 150 | 15 | 21 | M12x30 | 4xM32x1.5 | 42 | 490 | M12x20 | 0° /120° /240° |
| EHS-929 | 3~ | 550 | 569 | 55 | 207 | 15 | 360 | 415 | 611 | 644 | 605 | 345 | 300 | 197 | 533 | 39 | 89 | 92 | 100 | 150 | 15 | 21 | M12x30 | 4xM32x1.5 | 54 | 490 | M12x20 | 0° /120° /240° |
| EHS-930 | 3~ | 550 | 569 | 55 | 207 | 15 | 360 | 415 | 611 | 644 | 605 | 345 | 300 | 197 | 533 | 39 | 89 | 92 | 100 | 150 | 15 | 21 | M12x30 | 4xM32x1.5 | 54 | 490 | M12x20 | 0° /120° /240° |
| EHS-939 | 3~ | 550 | 569 | 55 | 207 | 15 | 360 | 415 | 611 | 644 | 605 | 345 | 300 | 197 | 533 | 39 | 89 | 92 | 100 | 150 | 15 | 21 | M12x30 | 4xM32x1.5 | 54 | 490 | M12x20 | 0° /120° /240° |
| EHS-949 | 3~ | 550 | 569 | 55 | 207 | 15 | 360 | 415 | 563 | 682 | 643 | 268 | 300 | 167 | 533 | 39 | 127 | 92 | 100 | 150 | 15 | 21 | M12x30 | 4xM32x1.5 | 42 | 490 | M12x20 | 0° /120° /240° |
| EHS-959 | 3~ | 550 | 569 | 55 | 207 | 15 | 360 | 415 | 649 | 682 | 643 | 345 | 300 | 197 | 533 | 39 | 127 | 92 | 100 | 150 | 15 | 21 | M12x30 | 4xM32x1.5 | 54 | 490 | M12x20 | 0° /120° /240° |
| EHS-969 | 3~ | 550 | 569 | 55 | 207 | 15 | 360 | 415 | 649 | 682 | 643 | 345 | 300 | 197 | 533 | 39 | 127 | 92 | 100 | 150 | 15 | 21 | M12x30 | 4xM32x1.5 | 54 | 490 | M12x20 | 0° /120° /240° |

EHS-9 双级 安装尺寸 / Two stage mounting dimensions

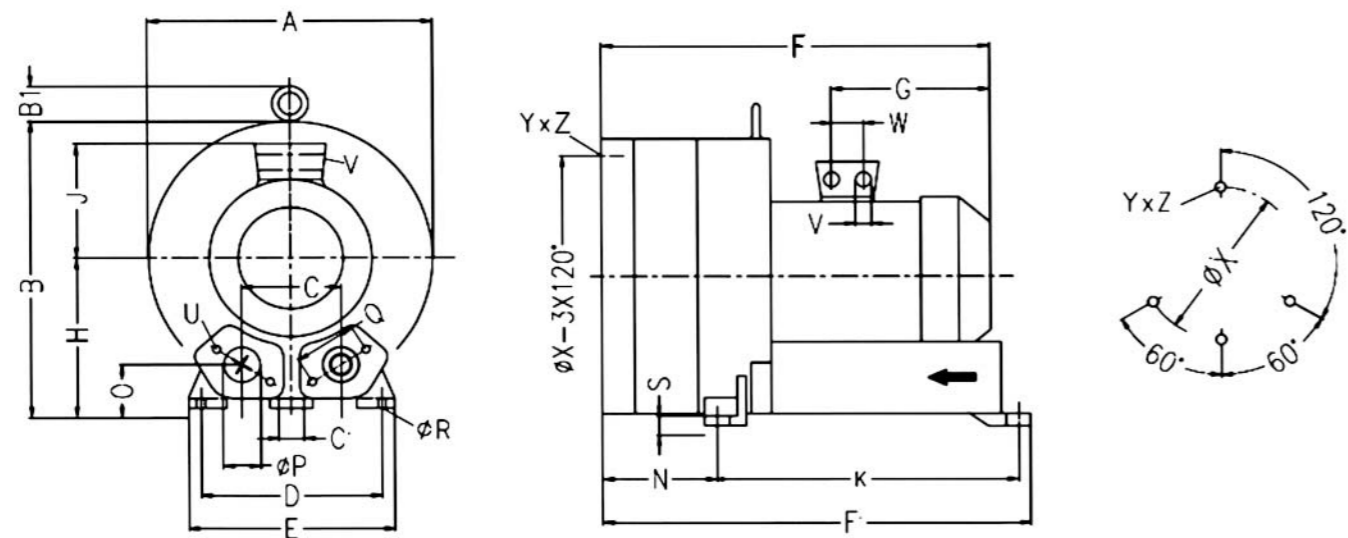
EHS-9



| 型号 Type | 相位 | A | A' | B | B1 | C | C' | D | E | F | F' | F'' | G | H | H' | J | K | M | N | O | ∮P | ∮Q | ∮R | S | T | U | V | W | ∮X | YxZ | X-Holes |
|----------|----|-----|-----|-----|----|-------|----|-----|-----|-----|-----|-----|-----|-----|-----|-----|-----|----|-----|----|-----|-----|----|----|-----|--------|-----------|----|-----|--------|-----------------|
| EHS-9320 | 3~ | 615 | 780 | 607 | 16 | 103.5 | 15 | 360 | 415 | 752 | 786 | 634 | 345 | 300 | 234 | 197 | 533 | 39 | 230 | 92 | 100 | 150 | 15 | 21 | 117 | M12x30 | 4xM40x1.5 | 54 | 490 | M12x30 | 51.4°/120°/240° |
| EHS-9322 | 3~ | 615 | 780 | 607 | 16 | 103.5 | 15 | 360 | 415 | 752 | 786 | 634 | 345 | 300 | 234 | 197 | 533 | 39 | 230 | 92 | 100 | 150 | 15 | 21 | 117 | M12x30 | 4xM40x1.5 | 54 | 490 | M12x30 | 51.4°/120°/240° |
| EHS-9325 | 3~ | 615 | 780 | 607 | 16 | 103.5 | 15 | 360 | 415 | 752 | 786 | 634 | 345 | 300 | 234 | 197 | 533 | 39 | 230 | 92 | 100 | 150 | 15 | 21 | 117 | M12x30 | 4xM40x1.5 | 54 | 490 | M12x30 | 51.4°/120°/240° |
| EHS-9326 | 3~ | 615 | 780 | 607 | 16 | 103.5 | 15 | 360 | 415 | 812 | 786 | 634 | 405 | 300 | 234 | 197 | 533 | 39 | 230 | 92 | 100 | 150 | 15 | 21 | 117 | M12x30 | 4xM40x1.5 | 54 | 490 | M12x30 | 51.4°/120°/240° |

EHS-9 双级 安装尺寸 Two stage mounting dimensions

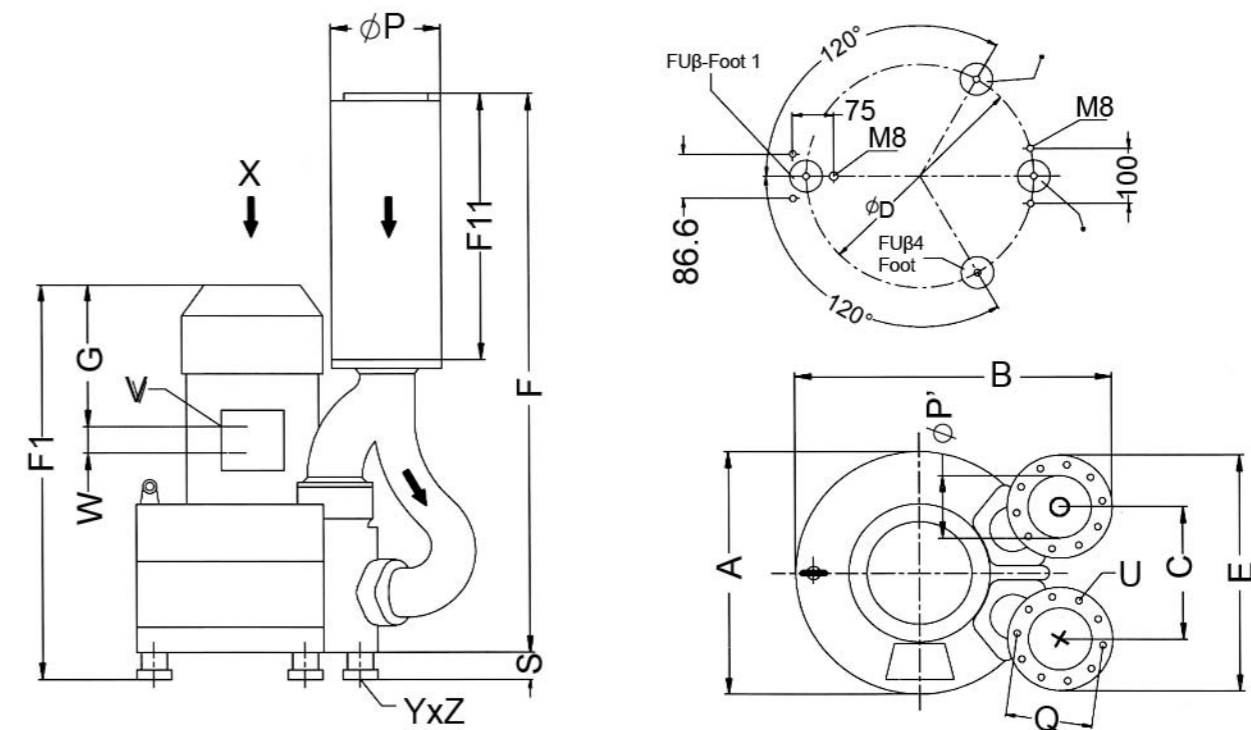
EHS-9



| 型号 Type | 相位 | A | B | B1 | C | C' | D | E | F | F' | G | H | J | K | M | N | O | φP | Q | φR | S | U | V | W | φX | YxZ | X-Holes |
|----------|----|-----|-----|----|-----|----|-----|-----|-----|-----|-----|-----|-----|-----|----|-----|-----|-----|-----|----|----|--------|-----------|----|-----|--------|----------------|
| EHS-9410 | 3~ | 615 | 657 | 16 | 207 | 15 | 360 | 415 | 752 | 786 | 345 | 350 | 197 | 533 | 39 | 280 | 142 | 100 | 140 | 15 | 71 | M12x35 | 4xM40x1.5 | 54 | 490 | M12x30 | 120° /60° /60° |
| EHS-9415 | 3~ | 615 | 657 | 16 | 207 | 15 | 360 | 415 | 752 | 786 | 345 | 350 | 197 | 533 | 39 | 280 | 142 | 100 | 140 | 15 | 71 | M12x35 | 4xM40x1.5 | 54 | 490 | M12x30 | 120° /60° /60° |
| EHS-9418 | 3~ | 615 | 657 | 16 | 207 | 15 | 360 | 415 | 812 | 786 | 345 | 350 | 197 | 533 | 39 | 280 | 142 | 100 | 140 | 15 | 71 | M12x35 | 4xM40x1.5 | 54 | 490 | M12x30 | 120° /60° /60° |

EHS-9 双级 安装尺寸 Two stage mounting dimensions

EHS-9



| 型号 Type | 相位 | A | B | C | D | E | F | F' | F'' | G | P | P' | Q | S | U | V | W | YxZ |
|----------|----|-----|-----|-----|-----|-----|------|-----|-----|-----|-----|-----|-----|----|-------|-------------|----|----------|
| EHS-9420 | 3~ | 615 | 723 | 307 | 490 | 526 | 1201 | 848 | 578 | 291 | 219 | 135 | 201 | 58 | M8x40 | 4 x M40x1.5 | 54 | M12x10.5 |
| EHS-9425 | 3~ | 615 | 723 | 307 | 490 | 526 | 1201 | 848 | 578 | 291 | 219 | 135 | 201 | 58 | M8x40 | 4 x M40x1.5 | 54 | M12x10.5 |
| EHS-9426 | 3~ | 615 | 723 | 307 | 490 | 526 | 1201 | 908 | 578 | 351 | 219 | 135 | 201 | 58 | M8x40 | 4 x M40x1.5 | 54 | M12x10.5 |

EHS2/1AC(单级)气环真空泵型号及性能参数表(IP55 50/60HZ)

EHS2/1AC(Single impeller) Gas ring vacuum pump models and the performance parameters table(IP55 50/60HZ)

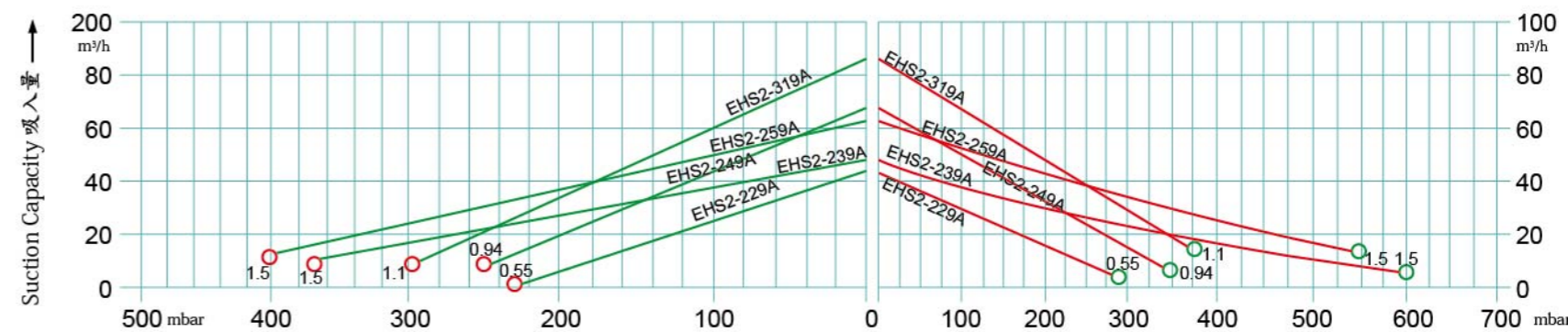


| 型号 (EHS2) | 单 双 级 | 频率 HZ | 额定 功率 KW | 额定电压 V | 额定 电流 A | 最大 排吸流量 m³/h | 额定 真空压力 mbar | 额定 压缩压力 mbar | 噪音 dB(A) | 重量 Kg |
|--------------|-------------|----------|----------------|-----------|---------------|--------------------|--------------------|--------------------|-------------|----------|
| | | | | | | | | | | |
| EHS2-239A | 双 | 50 | 1.5 | 200-240V | 9.7 | 47 | -370 | 600 | 58 | 30 |
| | | 60 | 1.75 | 200-240v | 10.3 | 60 | -420 | 660 | 62 | |
| EHS2-249A | 单 | 50 | 0.94 | 200-240V | 7.6 | 66 | -250 | 350 | 57 | 18 |
| | | 60 | 1.1 | 200-240V | 9 | 80 | -280 | 390 | 62 | |
| EHS2-259A | 双 | 50 | 1.5 | 200-240V | 9.7 | 65 | -400 | 550 | 59 | 32 |
| | | 60 | 1.75 | 200-240V | 10.3 | 76 | -390 | 540 | 53 | |
| EHS-319A | 单 | 50 | 1.1 | 200-240V | 10.1 | 87 | -300 | 380 | 55 | 23 |
| | | 60 | 1.3 | 200-240V | 10.3 | 105 | -350 | 390 | 62 | |

EHS2-1AC 单级 真空压缩选型曲线 Vacuum compression type curve

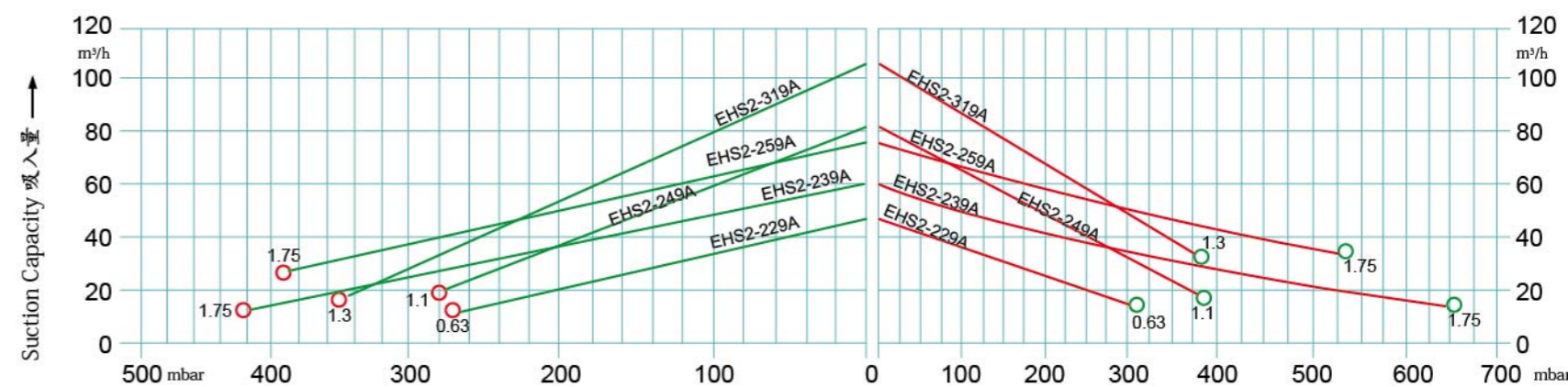
Vacuum Selection diagram 50 Hz—真空选型图表 50 Hz

Compressor Celetion Diagram 50 Hz—压缩选型图表 50 Hz



Vacuum Selection diagram 60 Hz—真空选型图表 60 Hz

Compressor Celetion Diagram 60 Hz—压缩选型图表 60 Hz



EHS2/3AC(单级)气环真空泵型号及性能参数表(IP55 50/60HZ)

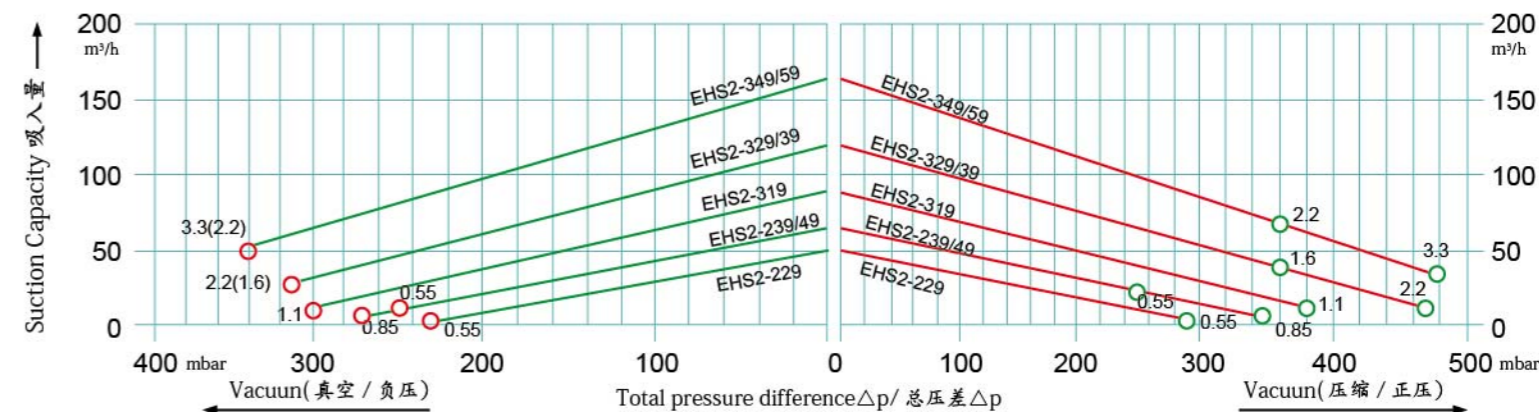
EHS2/3AC(Single impeller) Gas ring vacuum pump models and the performance parameters table(IP55 50/60HZ)

| 型号 (EHS2/3AC) Model | 单级 | 频率 frequency HZ | 马达额定参数 | | | 最大 排吸流量 Max airflow m³/h | 额定 真空压力 rated Vacuum mbar | 额定 压缩压力 rated compress mbar | 噪音 noises db(A) | 重量 weight Kg |
|---------------------------|------------------|-----------------------|-------------|-------------------|--------------|-----------------------------------|------------------------------------|--------------------------------------|-----------------------|--------------------|
| | 双级 | | 功率 | 电压 | 电流 | | | | | |
| | single double | | power KW | voltage V | current A | | | | | |
| EHS2-229 | 单 | 50 | 0.55 | 200-240△ 345-415Y | 2.8△/1.6Y | 47 | -230 | 290 | 57 | 16 |
| | | 60 | 0.63 | 220-275△ 380-480Y | 3△/1.7Y | 57 | -270 | 320 | 62 | |
| EHS2-239 | 单 | 50 | 0.55 | 200-240△ 345-415Y | 2.8△/1.6Y | 66 | -250 | 250 | 57 | 16 |
| | | 60 | 0.63 | 220-275△ 380-480Y | 3△/1.7Y | 80 | -260 | 250 | 62 | |
| EHS2-249 | 单 | 50 | 0.85 | 200-240△ 345-415Y | 4△/2.3Y | 66 | -280 | 350 | 57 | 17 |
| | | 60 | 0.95 | 220-275△ 380-480Y | 4△/2.3Y | 80 | -340 | 360 | 62 | |
| EHS2-319 | 单 | 50 | 1.1 | 200-240△ 345-415Y | 5.4△/3.1Y | 87 | -300 | 380 | 58 | 23 |
| | | 60 | 1.3 | 220-275△ 380-480Y | 5.4△/3.1Y | 105 | -340 | 370 | 62 | |
| EHS2-329 | 单 | 50 | 1.6 | 200-240△ 345-415Y | 7.5△/4.3Y | 120 | -310 | 360 | 64 | 26 |
| | | 60 | 2.05 | 220-275△ 380-480Y | 7.6△/4.4Y | 145 | -340 | 320 | 68 | |
| EHS2-339 | 单 | 50 | 2.2 | 200-240△ 345-415Y | 11.4△/6.6Y | 120 | -310 | 470 | 64 | 29 |
| | | 60 | 2.55 | 220-275△ 380-480Y | 11.2△/6.5Y | 145 | -360 | 480 | 68 | |
| EHS2-349 | 单 | 50 | 2.2 | 200-240△ 345-415Y | 11.4△/6.6Y | 165 | -340 | 360 | 65 | 32 |
| | | 60 | 2.55 | 220-275△ 380-480Y | 11.2△/6.5Y | 195 | -360 | 320 | 71 | |
| EHS2-359 | 单 | 50 | 3.3 | 200-240△ 345-415Y | 13△/7.5Y | 165 | -340 | 480 | 65 | 35 |
| | | 60 | 3.8 | 220-275△ 380-480Y | 14.2△/8.2Y | 195 | -380 | 530 | 71 | |

EHS2-3AC 单级 真空压缩选型曲线 Vacuum compression type curve

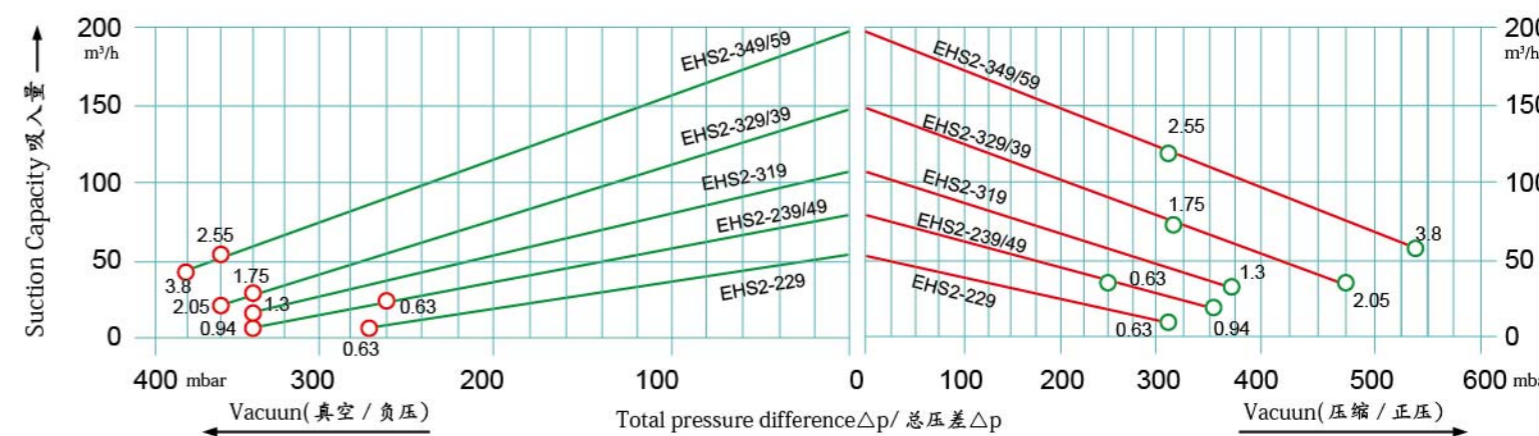
Vacuum Selection diagram 50 Hz—真空选型图表 50 Hz

Compressor Celetion Diagram 50 Hz—压缩选型图表 50 Hz

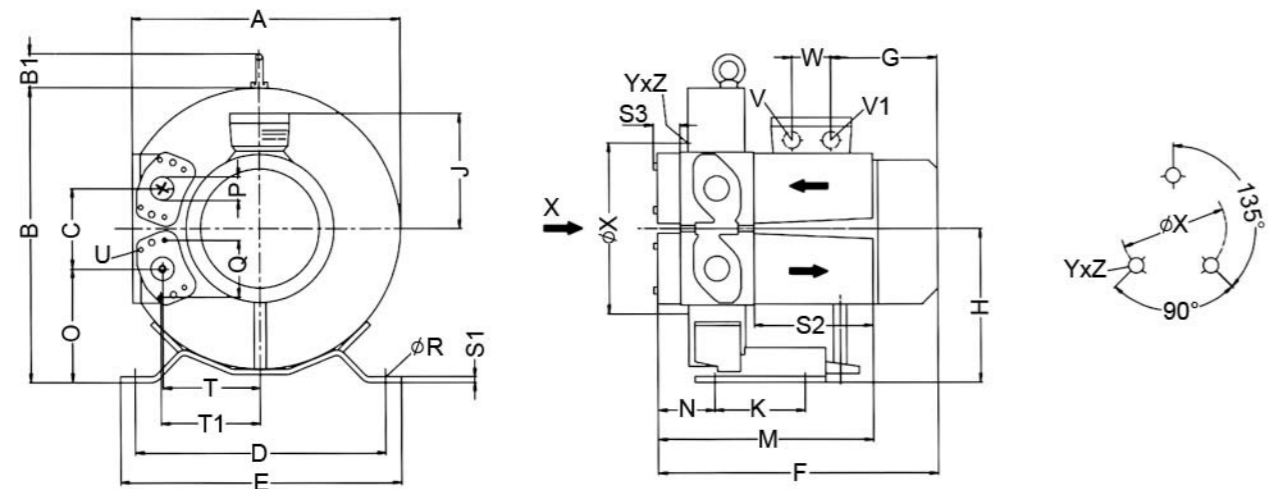


Vacuum Selection diagram 60 Hz—真空选型图表 60 Hz

Compressor Celetion Diagram 60 Hz—压缩选型图表 60 Hz



EHS2 单级 安装尺寸 Single stage mounting dimensions



| 型号 Type | 相位 | A | B | B1 | C | D | E | F | G | H | J | K | M | N | O | P | Q | R | S1 | S2 | S3 | T | T1 | U | V | V | W | X | YxZ |
|----------|----|-----|-----|----|-----|-----|-----|-----|-----|-----|-----|-----|-----|----|-----|-------|----|----|----|-----|----|-----|-----|-------|---------|---------|----|-----|-------|
| EHS2-229 | 3~ | 294 | 319 | 39 | 87 | 260 | 298 | 293 | 129 | 167 | 111 | 105 | 252 | 65 | 124 | G11/4 | 64 | 14 | 4 | 140 | 31 | 105 | 107 | M6x17 | M25x1.5 | M16x1.5 | 32 | 153 | M6x15 |
| EHS2-239 | 3~ | 313 | 339 | 39 | 94 | 290 | 325 | 295 | 153 | 177 | 120 | 105 | 256 | 67 | 130 | G11/4 | 64 | 14 | 4 | 140 | 31 | 114 | 116 | M6x17 | M25x1.5 | M16x1.5 | 32 | 153 | M6x15 |
| EHS2-249 | 3~ | 313 | 339 | 39 | 94 | 290 | 325 | 295 | 153 | 177 | 120 | 105 | 256 | 67 | 130 | G11/4 | 64 | 14 | 4 | 140 | 31 | 114 | 116 | M6x17 | M25x1.5 | M16x1.5 | 32 | 153 | M6x15 |
| EHS2-319 | 3~ | 346 | 375 | 39 | 103 | 315 | 350 | 321 | 129 | 195 | 111 | 130 | 260 | 66 | 143 | G11/4 | 64 | 14 | 4 | 140 | 31 | 125 | 127 | M6x17 | M25x1.5 | M16x1.5 | 32 | 167 | M6x15 |
| EHS2-329 | 3~ | 368 | 395 | 39 | 114 | 328 | 363 | 361 | 185 | 205 | 128 | 152 | 265 | 68 | 148 | G11/4 | 64 | 14 | 5 | 140 | 31 | 137 | 138 | M6x17 | M25x1.5 | M16x1.5 | 32 | 192 | M6x15 |
| EHS2-339 | 3~ | 368 | 395 | 39 | 114 | 328 | 363 | 361 | 185 | 205 | 128 | 152 | 265 | 68 | 148 | G11/4 | 64 | 14 | 5 | 140 | 31 | 137 | 138 | M6x17 | M25x1.5 | M16x1.5 | 32 | 192 | M6x15 |
| EHS2-349 | 3~ | 418 | 455 | 39 | 127 | 371 | 406 | 364 | 129 | 235 | 111 | 105 | 271 | 72 | 172 | G11/4 | 64 | 14 | 4 | 140 | 31 | 153 | 155 | M6x17 | M25x1.5 | M16x1.5 | 32 | 228 | M6x15 |
| EHS2-359 | 3~ | 418 | 455 | 39 | 127 | 371 | 406 | 390 | 211 | 235 | 111 | 105 | 271 | 72 | 172 | G11/4 | 64 | 14 | 4 | 140 | 31 | 153 | 155 | M6x17 | M25x1.5 | M16x1.5 | 32 | 228 | M6x15 |

EHS2(双级 / 三级) 气环真空泵型号及性能参数表 (IP55 50/60HZ)

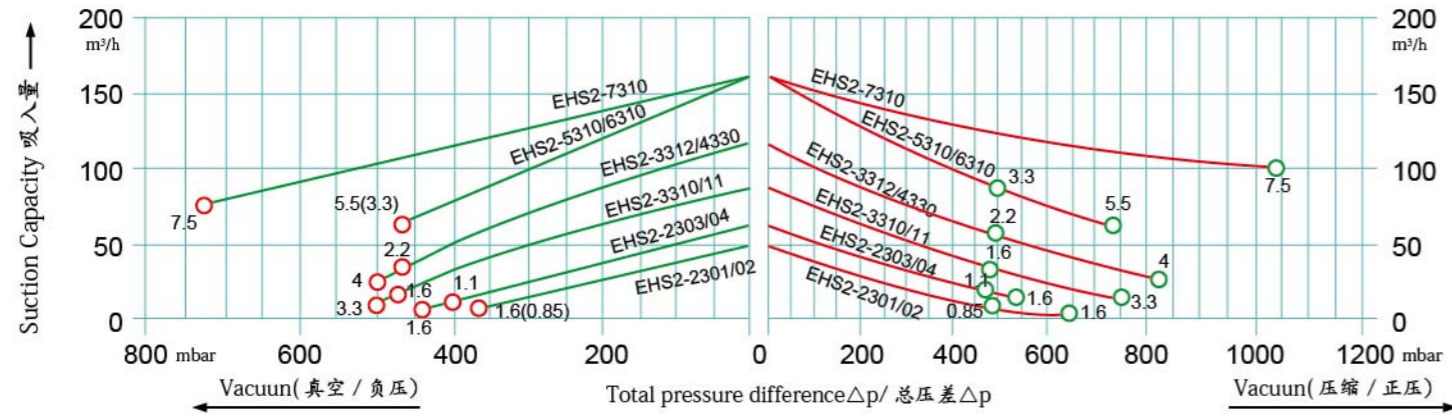
EHS2/3AC (Double / three impeller) Gas ring vacuum pump models and the performance parameters table(IP55 50/60HZ)

| 型号 (EHS2 3AC) Model | 单级 | 频率 frequency HZ | 功率 power KW | 马达额定参数 | | 最大 排吸流量 Max airflow m³/h | 额定 真空压力 rated Vacuum mbar | 额定 压缩压力 rated compress mbar | 噪音 noises db(A) | 重量 weight Kg |
|---------------------------|-----------------------|-----------------------|-------------------|--------------------|--------------------|-----------------------------------|------------------------------------|--------------------------------------|-----------------------|--------------------|
| | 双级 double three | | | 电压 voltage V | 电流 current A | | | | | |
| EHS2-2301 | 双 | 50 | 0.85 | 200-240Δ/345-415Y | 4Δ/2.3Y | 47 | -370 | 490 | 58 | 24 |
| | | 60 | 0.95 | 220-275Δ/380-480Y | 4Δ/2.3Y | 60 | -440 | 480 | 62 | |
| EHS2-2302 | 双 | 50 | 1.6 | 200-240Δ/345-415Y | 7.5Δ/4.3Y | 47 | -370 | 650 | 58 | 28 |
| | | 60 | 2.05 | 220-275Δ/380-480Y | 7.6Δ/4.4Y | 60 | -500 | 740 | 62 | |
| EHS2-2303 | 双 | 50 | 1.1 | 200-240Δ/345-415Y | 5.4Δ/3.1Y | 65 | -400 | 480 | 59 | 29 |
| | | 60 | 1.3 | 220-275Δ/380-480Y | 5.4Δ/3.1Y | 76 | -480 | 480 | 63 | |
| EHS2-2304 | 双 | 50 | 1.6 | 200-240Δ/345-415Y | 7.5Δ/4.3Y | 65 | -440 | 540 | 59 | 30 |
| | | 60 | 2.05 | 220-275Δ/380-480Y | 7.5Δ/4.3Y | 76 | -560 | 600 | 63 | |
| EHS2-3310 | 双 | 50 | 1.6 | 200-240Δ/345-415Y | 7.5Δ/4.3Y | 87 | -480 | 450 | 61 | 33 |
| | | 60 | 2.05 | 220-275Δ/380-480Y | 7.6Δ/4.4Y | 105 | -430 | 410 | 66 | |
| EHS2-3311 | 双 | 50 | 3.3 | 200-240Δ/345-415Y | 13Δ/7.5Y | 87 | -500 | 750 | 61 | 39 |
| | | 60 | 3.8 | 220-275Δ/380-480Y | 13.8Δ/8Y | 105 | -510 | 850 | 66 | |
| EHS2-2312 | 双 | 50 | 2.2 | 200-240Δ/345-415Y | 11.4Δ/6.6Y | 120 | -470 | 460 | 64 | 40 |
| | | 60 | 2.55 | 220-275Δ/380-480Y | 11.2Δ/6.5Y | 145 | -500 | 450 | 70 | |
| EHS2-4330 | 双 | 50 | 4 | 345-415Δ | 9.5Δ | 120 | -500 | 820 | 65 | 51 |
| | | 60 | 4.6 | 380-480Δ | 10Δ | 145 | -530 | 810 | 71 | |
| EHS2-5310 | 双 | 50 | 3.3 | 200-240Δ/345-415Y | 13Δ/7.5Y | 165 | -460 | 500 | 67 | 48 |
| | | 60 | 3.8 | 220-275Δ/380-480Y | 14.2Δ/8.2Y | 195 | -480 | 420 | 71 | |
| EHS2-6310 | 双 | 50 | 5.5 | 345-415Δ | 12Δ | 165 | -460 | 740 | 68 | 65 |
| | | 60 | 6.6 | 380-480Δ | 11.5Δ | 195 | -480 | 840 | 72 | |
| EHS2-7310 | 双 | 50 | 7.5 | 345-415Δ | 16Δ | 170 | -730 | 1040 | 72 | 86 |
| | | 60 | 8.6 | 380-480Δ | 16Δ | 200 | -700 | 1040 | 76 | |

EHS2 双级、三级 真空压缩选型曲线 3AC / Vacuum compression type curve

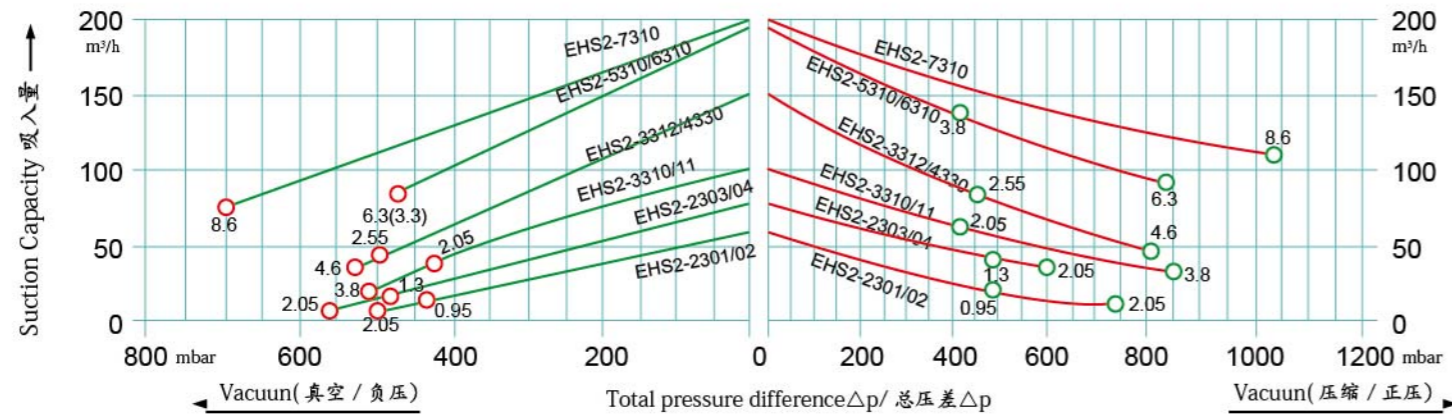
Vacuum Selection diagram 50 Hz—真空选型图表 50 Hz

Compressor Celetion Diagram 50 Hz—压缩选型图表 50 Hz

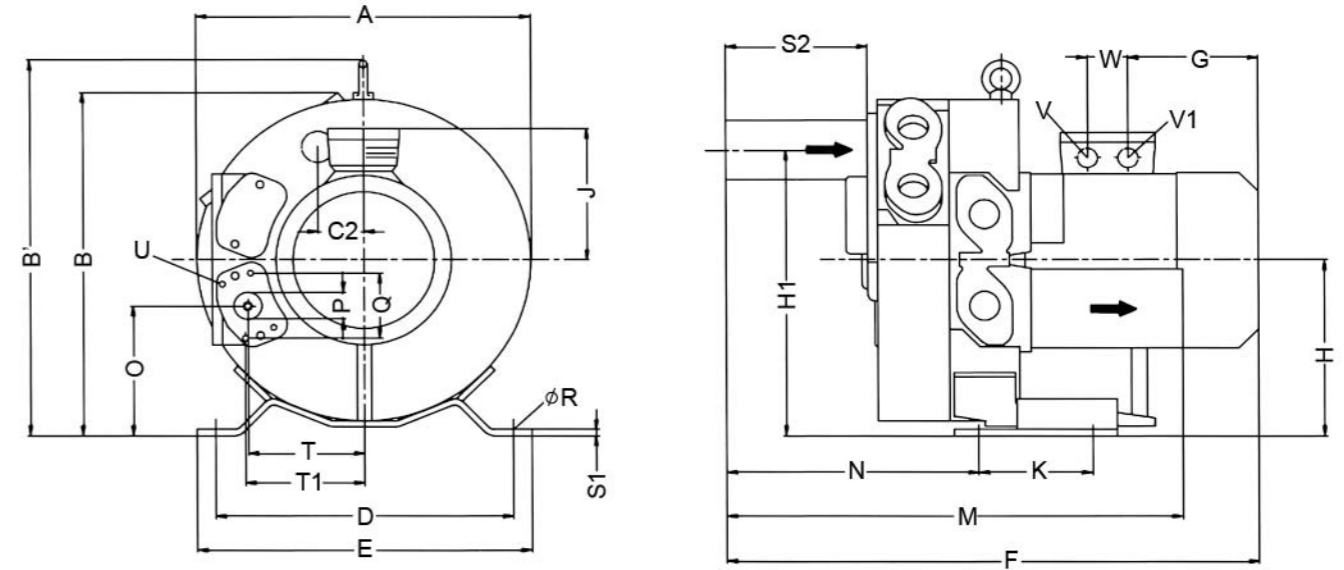


Vacuum Selection diagram 60 Hz—真空选型图表 60 Hz

Compressor Celetion Diagram 60 Hz—压缩选型图表 60 Hz



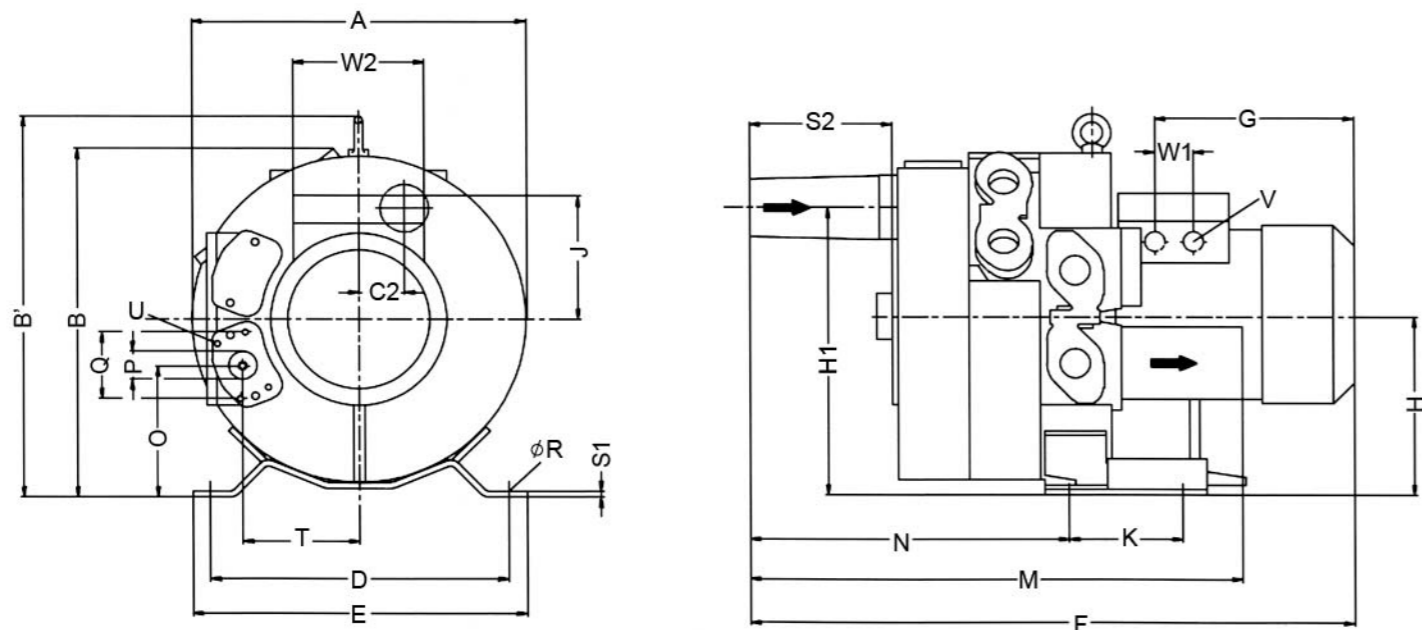
EHS2 双级 安装尺寸 Two stage mounting dimensions



| 型号 Type | 相位 | A | B | B' | C2 | D | E | F | G | H | H1 | J | K | M | N | O | P | Q | φR | S1 | S2 | S3 | T | T1 | U | V | V1 | W |
|-----------|----|-----|-----|-----|----|-----|-----|-----|-----|-----|-----|-----|-----|-----|-----|-----|-------|----|----|----|-----|----|-----|-----|-------|-----------|---------|----|
| EHS2-2301 | 3~ | 313 | 326 | 359 | 43 | 260 | 298 | 525 | 185 | 167 | 272 | 128 | 105 | 426 | 241 | 123 | G11/4 | 64 | 14 | 4 | 140 | 31 | 105 | 107 | M6x17 | M25x1.5 | M16x1.5 | 32 |
| EHS2-2302 | 3~ | 313 | 326 | 359 | 43 | 260 | 298 | 525 | 185 | 167 | 272 | 128 | 105 | 426 | 241 | 123 | G11/4 | 64 | 14 | 4 | 140 | 31 | 105 | 107 | M6x17 | M25x1.5 | M16x1.5 | 32 |
| EHS2-2303 | 3~ | 331 | 345 | 380 | 47 | 290 | 325 | 390 | 153 | 177 | 291 | 120 | 105 | 431 | 243 | 130 | G11/4 | 64 | 14 | 4 | 140 | 31 | 114 | 116 | M6x17 | M25x1.5 | M16x1.5 | 32 |
| EHS2-2304 | 3~ | 331 | 345 | 380 | 47 | 290 | 325 | 421 | 185 | 177 | 291 | 128 | 105 | 431 | 243 | 130 | G11/4 | 64 | 14 | 4 | 140 | 31 | 114 | 116 | M6x17 | M25x1.5 | M16x1.5 | 32 |
| EHS2-3310 | 3~ | 363 | 377 | 414 | 52 | 315 | 350 | 529 | 180 | 195 | 319 | 128 | 130 | 436 | 243 | 143 | G11/4 | 64 | 14 | 4 | 140 | 31 | 125 | 127 | M6x17 | M25x1.5 | M16x1.5 | 32 |
| EHS2-3311 | 3~ | 363 | 377 | 414 | 52 | 315 | 350 | 554 | 211 | 195 | 319 | 128 | 130 | 436 | 243 | 143 | G11/4 | 64 | 14 | 4 | 140 | 31 | 125 | 127 | M6x17 | M25x1.5 | M16x1.5 | 32 |
| EHS2-2312 | 3~ | 387 | 402 | 435 | 57 | 328 | 363 | 549 | 185 | 206 | 343 | 128 | 152 | 453 | 256 | 148 | G11/4 | 64 | 14 | 5 | 140 | 31 | 137 | 138 | M6x17 | M25x1.5 | M16x1.5 | 42 |
| EHS2-4330 | 3~ | 387 | 402 | 435 | 57 | 328 | 363 | 603 | 211 | 206 | 343 | 148 | 152 | 453 | 256 | 148 | G11/4 | 64 | 14 | 5 | 140 | 31 | 137 | 138 | M6x17 | 2xM32x1.5 | M16x1.5 | 32 |
| EHS2-5310 | 3~ | 442 | 457 | 495 | 63 | 372 | 406 | 578 | 211 | 236 | 389 | 128 | 152 | 458 | 259 | 173 | G11/4 | 64 | 14 | 5 | 140 | 31 | 153 | 155 | M6x17 | M25x1.5 | M16x1.5 | 42 |
| EHS2-6310 | 3~ | 442 | 457 | 495 | 63 | 372 | 406 | 643 | 248 | 236 | 389 | 148 | 152 | 458 | 259 | 173 | G11/4 | 64 | 14 | 5 | 140 | 31 | 153 | 155 | M6x17 | 2xM32x1.5 | M16x1.5 | 42 |

EHS2 三级 安装尺寸

Three stage mounting dimensions



| 型号 Type | 相位 | A | B | B' | C2 | D | E | F | G | H | H1 | K | M | N | O | P | Q | φR | S1 | S2 | T | U | V | W1 | W2 |
|-----------|----|-----|-----|-----|----|-----|-----|-----|-----|-----|-----|-----|-----|-----|-----|--------------------------------|----|----|----|-----|-----|-------|---------|----|-----|
| EHS2-7310 | 3~ | 442 | 402 | 492 | 63 | 371 | 406 | 717 | 274 | 236 | 389 | 152 | 539 | 336 | 172 | G1 ¹ / ₄ | 64 | 14 | 5 | 146 | 153 | M6x17 | M32x1.5 | 42 | 120 |